

THE LINK

A COMMUNITY MAGAZINE FOR THE
SEVEN PARISHES IN THE SOUTH
WARWICKSHIRE 7 BENEFICE

May 2023

£1.20



■ BARCHESTON with WILLINGTON ■ BARTON-ON-THE-HEATH
■ BURMINGTON ■ CHERINGTON with STOURTON ■ LONG COMPTON
■ WHICHFORD and ASCOTT ■ THE WOLFORDS

EVENTS DIARY

Contact: **The Editor**
Email: editor@swlink.org.uk

Events Update

May (VH = Village Hall; Ch = Church)

Mon 1	Bluebell Walk Teas, Whichford Ch	14.00-17.00
Tues 2	WI Book Club	14.30
Weds 3	Community Coffee, Long Compton Ch	10.30-Noon
Weds 3	WI Meeting, Wolford VH	19.30
Thurs 4	Country Market, Moreton WI Hall	10.00-Noon
Fri 5	Cameo Club Tea Party St Michael's Field Burmington	
Sun 7	Organ Recital, Barcheston Ch	15.30
Thurs 11	Long Compton Book Club	19.00
Fri 12	Feel Good Friday, The Hall, Stourton	14.00
Sat 13	Plant and Produce Sale, The Paddock Stourton	
Sat 13	Plant and Produce Sale, Lenticulars, Whichford	
Sat 13	Stour Singers, St Edmund's Ch, Shipston	19.30
Sat 13	Social Saturday, Long Compton VH	11-13.00
Sat 13	Village Hall AGM, Long Compton VH	Noon
Sat 13	Sounds Historical, Long Compton Ch	19.00
Sun 14	Plant and Produce Sale, The Paddock, Stourton	
Sun 14	Plant and produce Sale, Lenticulars, Whichford	
Thurs 18	Country Market, Moreton WI Hall	10.00-Noon
Fr 19	Long Compton Chapel 100 years event	19.30
Sat 20	Coffee Shop, The Hall, Stourton	10.30-Noon
Sat 20	Fish and Chips Take Away, Wolford VH	18.00
Sat 20	The Lost King, Brailes Picture House	19.45
Tues 23	Coffee Morning, Wolford Ch	11.00-Noon
Weds 24	Parish Council AGM, Burmington VH	19.30
Thurs 25	Country Market, Moreton WI Hall	10.00-Noon
Fri 26	Tad Newton's Jazz Townsend Hall Shipston	
Fri 26	Carers4Carers Kineton VH	10.30-Noon
Fri 12	Feel Good Friday, The Hall, Stourton	14.00
Sat 27	Long Compton Garden Club outing	
Mon 29	Moreton Car boot Sale	07.00



Coronation Event Round Up



Sunday May 7

Cherington and Stourton Picnic, Playing Field	12.30
Long Compton Bring and Share Lunch, Long Compton VH	12.30
Barton-on-the Heath Picnic	12.00
Burmington Picnic, St Michael's Field	14.00
Coronation Picnic, Whichford and Ascott	
Coronation Party, Wolford VH	12.30
Coronation Songs of Praise, St Michael's Field Marquee	18.00

Mon 8

Burmington Coronation breakfast, St Michael's Field	10.00
---	-------

Sun 14

Coronation Evensong, Long Compton VH	18.00
--------------------------------------	-------



Cover photograph by Chris Jackson.
Reproduced with permission:
www.coronation.gov.uk

The LINK welcomes contributions for the front cover or elsewhere. Portrait orientation and good quality photographs or artwork preferred. Please send items to editor@swlink.org.uk

LINK cover and artwork produced by KMS Litho, Hook Norton.

The LINK TEAM

Editor	Sara Billins	editor@swlink.org.uk
Treasurer	Martin McKenna	treasurer@swlink.org.uk
Advertising Manager	Keith Murphy	advert@swlink.org.uk
Distribution Manager	Alan Holmes	distribution@swlink.org.uk
Chairperson	Keith Murphy	chairman@swlink.org.uk
Company Secretary	Martin McKenna	secretary@swlink.org.uk
Online Manager	Keith Murphy	online@swlink.org.uk

Village Editors

Barcheston & Willington		barcheston@swlink.org.uk
Barton-on-the-Heath		barton@swlink.org.uk
Burmington	Graham French	burmington@swlink.org.uk
Cherington & Stourton	Christine Dudfield	cherington@swlink.org.uk
Long Compton		longcompton@swlink.org.uk
Whichford & Ascott	Melanie Arnold	whichford@swlink.org.uk
Great Wolford	Lynn Mathias	greatwolford@swlink.org.uk
Little Wolford		littlewolford@swlink.org.uk

Feature Editors

Church News	Liz Clarke	officesw7@gmail.com
Nature Notes	Tony Partridge	editor@swlink.org.uk
Gardening Notes	Margaret Welsh, Miranda Arnold	editor@swlink.org.uk
Farming Notes	Lynn Mathias	farming@swlink.org.uk

Village Distributors

Barcheston & Willington	Maki Sutton	661539
Barton-on-the-Heath	Cathryn Aitken	07929 639871
Burmington	Julia Anne Sykes	07497 088 882
Cherington & Stourton	Ebe McLeod	686278
Long Compton	Jean Taylor	684806
Whichford & Ascott	Carol Moore	684961
Great Wolford	Sue Rew	674380
Little Wolford		

Please note the copy deadline for May 2023:

Monday 15 May

THE LINK is published by South Warwickshire LINK Ltd, a not-for-profit company limited by guarantee (reg. no. 07234681), and printed by KMS Litho Ltd, Hook Norton.

The opinions expressed in The LINK are not necessarily those of the Editor or any member of the LINK team. Whilst every effort is made to ensure accuracy of information printed, the Editor/team do not accept any responsibility for the consequences of any errors that may occur.

The LINK does not endorse any products, services, or companies. The appearance of advertisements in this magazine is not a guarantee of those products/services or the companies that manufacture, distribute, or promote such products/services.

All information held by The LINK is strictly confidential and is held purely for administration purposes and not sold or offered to third parties.

All subscription monies paid to The LINK are non-refundable in the event that the South Warwickshire LINK Ltd. ceases to operate.

EDITORIAL



Link Talk

Welcome to this special May Coronation edition of The Link. It is jam packed with events taking place around the villages over the Bank Holiday weekend, so do show your support for all the volunteers who have put these activities together for us, go along and participate in the fun. If you are heading to a village Coronation picnic the centre pages include some of the 'official' recipes which have been specifically designed for these events. I'll be having a go at the quiche for Long Compton.

You will notice, that in response to a number of requests, the font size has been increased for this edition, so hopefully you will be able to put your magnifying glasses aside and enjoy this edition unaided!

Happy holidays!

Sara Billins Editor

The LINK – Online, Subscriptions and Advertising

Having made an appeal in March for help with my various tasks for The LINK, I'm pleased to report progress is being made.

Many thanks to our new Village Editor for Barton on the Heath, Cathryn Aitken, who has agreed to take the over advertising and the production of the monthly advertising pages from June. If any readers wish to advertise, or can point anyone in our direction, this will enable Cathryn to exercise her newfound skills. Contact advert@swlink.org.uk for more details.

I've also had a volunteer to take over the administration of subscriptions and hopefully by next month, the new arrangements will be in place.

This just leaves the online management of the website. If this is something that you could help with, please do make contact. The website is an important part of our presence in the community. It played a great part in telling The National Lottery who we are and what we do, and this helped secure the grant that is supporting us this year.

Keith Murphy, online@swlink.org.uk

Coronation Wordsearch

R	B	U	C	N	S	C	P	A	L	A	C	E	S	P	J	B	T
U	I	R	A	Z	O	P	E	I	K	T	I	V	Y	W	A	U	H
C	G	B	K	I	N	G	Q	L	C	R	O	W	N	G	O	N	R
W	E	S	T	M	I	N	S	T	E	R	A	B	B	E	Y	T	O
A	C	A	R	R	I	A	G	E	L	B	Y	Q	R	K	O	I	N
I	C	T	A	W	W	O	Q	Y	V	E	R	K	E	V	V	N	E
Y	Y	A	Q	U	E	E	N	Q	B	K	O	A	Y	M	V	G	M
Y	Z	M	Z	W	I	N	D	S	O	R	G	M	T	T	J	Y	U
H	K	U	W	B	U	C	K	I	N	G	H	A	M	I	O	P	D
C	A	S	T	L	E	U	C	O	R	O	N	A	T	I	O	N	M
Q	B	Q	A	Z	F	I	I	R	O	Y	A	L	P	N	H	N	G
S	T	R	E	E	T	P	A	R	T	Y	O	V	H	R	E	C	S

Can YOU discover the missing words?

CORONATION

KING

QUEEN

CROWN

WESTMINSTER ABBEY

ROYAL

CELEBRATION

WINDSOR

STREET PARTY

CASTLE

BUCKINGHAM

CARRIAGE

THRONE

BUNTING

PALACE



Moreton-in-Marsh Country Market

For everything homemade, home grown, home cooked and home crafted.
Every Thursday, 10.00 am to 12.00 pm, WI Hall, New Road, Moreton in Marsh.

Dates for the diary for May

May 4th – A once in a lifetime event – the **Coronation of King Charles III**.

We are offering picnic boxes for pre-order, to enjoy on the day.

Details on Facebook

May 18th – It's **Vegetarian Week** and we will be providing some interesting and new ideas in vegetarian food.

May 25th – To round off the month it's **Biscuit Week!** The market always has a good range of homemade biscuits.

07933 141410 / mimcountrymarket@gmail.com or find us on [Facebook](#)

A big thank you to all our customers for your continued support.



On a Roll

It's been two sell-outs back-to-back for our traditional jazz events: Tenement Jazz Band, followed by Tom "Spats" Langham's Hot Fingers. It looks like the message is getting out there on just how good these events are! At the time of writing, tickets are going well for King Pleasure and the Biscuit Boys in April, so maybe we'll achieve a hat trick! All proceeds from our Traditional Jazz events go towards the long list of maintenance and improvements of the hall, so thank you for your support. Likewise, we love to see the hall being booked – our booking fees are very reasonable and they also go 100% back into the charity under which the hall operates (trustees of the hall give their time for free).

Since last month, we've had work completed to extend our storage facilities, we're progressing the replacement of an ageing gas heater for the main hall, and we're finalising an agreement for the purchase of a stage lift to provide 'access for all' to the stage. If you find yourself in Tesco's and get one of those discs for charity, think of us – every little counts. We have a flexible facility for any occasion: Our main hall is 57ft by 46ft (excluding a large stage, also available), where 300 people can be accommodated in a theatre style layout and 200 people in a cabaret style layout, and our capacity is 400 people overall, useful for more standing style attendance for those dance-a-long music events – there'll be at least one of those from what we see of the Proms bookings this year, but more of that elsewhere! There's also a smaller hall 30ft by 26ft and a servery area – all these can be booked together, or individually. There's a fully equipped kitchen, Wi-Fi, disabled access, and licensing to run a bar too! Many possibilities, e.g., weddings, recitals, plays, parties, concerts, pantomimes, meetings, bands, film nights (we have a screen, projector, and sound equipment), team building, clubs, exercise classes, etc. If that's sparked a booking idea, contact us: info@townsendhall.com, 07514-704057.

On the Trad Jazz front, next up is Tad Newton's Jazz Friends performing 'Basin Street Blues to Harlem' on Friday May 26. It's going to be another good one! Tickets are £10, available from www.ticketsource.co.uk/townsend-hall, where you can bag your own table and seating, or for general availability seating from Clarke Electrical Services in town. There's loads more going on: take a look at our website: www.townsendhall.co.uk, and follow us on Facebook and Twitter for more.

Haydn Ward Townsend Hall Trustee

Carers4Carers monthly meeting

Friday 26 May 10.30am - 12 noon: at Kineton Village Hall. The British Motor Museum at Gaydon will be bringing along the sights and sounds of the British motor industry for an object handling and reminiscence session. Come along (with or without the person you care for) for a trip down memory lane!



For more information about our support group for carers, including help with transport to/from meetings, phone Gillian on 07947 893504, email us at kcarers4carers@gmail.com or search www.carers4carersonthefosse.org.uk.

Lisa Barnett Assistant Coordinator



Hope/Help Ukraine

Many thanks to all those who have contributed so generously to the Hope/Help Ukraine charity based in the ex-Debenhams store in Banbury (which is worth a visit to see how organised the volunteers are). Your donations have included mobility scooters, a generator, provisions for the frontline troops; elderly and ill Ukrainians remaining in their shelled homes; and refugees in Poland. Bedding, clothes and toys are well-provided for at present, so the convoys are concentrating on specific items, see below for this month.

The current appeal is for the orphanages set up since the war began who need: Baby milk/food, nappies, wipes, childrens` paracetamol/ibuprofen/nasal spray/cough syrup, non-perishable foods, sweets, jam & other bread spreads, plasters, bandages and, always welcome, cash donations and medical supplies. Thank you again, Erica (01608 686273)



The LINK has been kindly supported during 2023 by The National Lottery Fund (Awards for All).

**Come and join SW7's Choral Celebration
of the Coronation of Their Majesties
KING CHARLES III & QUEEN CAMILLA**



SONGS of PRAISE

6.00 pm Sunday 7th May 2023

Marquee

Michael's Field

BURMINGTON

Refreshments

Off-road parking available

For further information call Sonia Baker: 01608 661459



Join us for Community Coffee

at



**St Peter and St Paul's Church, Long Compton
on**

**May 3 from 10.30am to 12.00
and the 1st Wednesday of every month**

**All are very welcome,
Young, Old, Families, Dog Walkers and Newcomers to the Village.**

STOUR SINGERS

conducted by Richard Emms
present

Handel's Messiah

with

Natalie Montakhab *soprano*

James Neville *countertenor*

Matthew Minter *tenor*

William Burn *bass baritone*

and

The Royal Birmingham Conservatoire Orchestra

Natalie Montakhab and Matthew Minter appear by arrangement with
Ann Ferrier Artists - Concert Directory International

Saturday, 13 May 2023 at 7.30pm

St. Edmund's Church, Shipston on Stour

Tickets £16 (accompanied children free)

Available online from Eventbrite or on the door

Please scan the QR code for the Eventbrite link:



INFO LINK

Contact: **The Editor**
Email: editor@swlink.org.uk

The Post Office van is in the car park by the village shop in Long Compton from 9.30 - 11.30 am Monday and Wednesday, and from 12.30 to 2.00 pm Tuesday and Thursday.
Shipston 'tip' is open - to book <https://www.warwickshire.gov.uk/recyclingshipston>

DATES AND FETES – 2023

Please send us the dates of all your significant social events.

Please check this list before you plan a new event.

Sat 17 June Barton on the Heath Village Fete

Sun 18 June 1.30-5.30pm Whichford and Ascott Open Gardens

Sat 24 June Long Compton Community Fete

Sat 5 August Cherington, Stourton and Sutton Country Fair and Flower Show.

BH Mon 28 August Whichford and Ascott Flower Show and Fete

Local Catholic Church Services

Chipping Norton

Holy Trinity, London Road. Saturday Vigil 6.00 pm. Sunday 11.00 am Tel: 01608 642703

Stow-on-the-Wold

Our Lady and St. Kenelm, 5 Back Walls. Saturday Vigil 6.00 pm. Sunday 9.15 am Tel: 01608 674354

Shipston and Brailes

Shipston, Our Lady and St. Michael, Darlingscote Road. Sunday 9.15 am.

Brailes, SS Peter and Paul, Friars Lane. Saturday Vigil 5.00 pm (for Shipston and Brailes Tel: 01608 685259)

Chipping Campden

St Catharine's Lower High St. Sunday masses: – Saturday Vigil 6.00 pm. Sunday 10.30 am Tel: 01386 84026

Local Quaker Meetings

Local Quaker Meetings for worship:

Broad Campden, Quaker Meeting House, GL556US - Sundays at 10.30 am.

Ettington, Quaker Meeting Hse, Old Halford Rd, CV377TH -Sundays at 11.00 am.

Sibford, Quaker Meeting House, Sibford Gower, OX155RX - Sundays at 10.30 am.

Shipston on Stour, in St Edmund's Church - last Thursdays (not Dec) at 2.30 pm

Local Congregational Services

Services at the Ebenezer Chapel, Long Compton every third Sunday at 3.30 pm.

Chair Elizabeth Gilkes 07791 621778 Sec/Treasurer Sally Franklin

PARISH PEOPLE

Parochial Church Councils (PCCs)

	<i>Barcheston St Martin</i>	<i>Barton-on-the-Heath St Lawrence</i>
Churchwardens	David Hodges 07767840857	Hamish Cathie 674303
Secretary	Alice & Tom Murray 238755	Gillian Cathie 674303
Treasurer	David Cleave 666002	Mandy McPherson 674734
	<i>Burmington St Barnabas & St Nicholas</i>	<i>Cherington St John the Baptist</i>
Churchwardens	Michael Macdonald 662483	Roger Maycock 686404
Secretary	Graham French 239032	Paul Levitch 686353
Treasurer	Stuart Walsh, 07870 154425	Rory McLeod 686278
	<i>Long Compton St Peter and St Paul</i>	<i>Whichford St Michael</i>
Churchwardens	Jill Kirby 684923	Mandy James 684479/ Sophia Corlett
Secretary	Zoë Wrigley 650404	Lucy Simpson
Treasurer	John Nye 684363	Jenny Scrivener
	<i>Wolford St Michael & All Angels</i>	
Churchwarden	John Wrench 674389	
Treasurer	Ann McKenna 674009	

Parish Councils

Parish	Chair	Clerk
Barcheston	David Sutton	Lindsey Walker (663567)
Barton-on-the-Heath	James Coker (674601)	Julia Hicks
Burmington	Robert Hutchings (661496)	
Cherington	Philip Townsend (686529)	Sara Cole (686250)
Long Compton	Simon Bing (684827)	Sam Weller (684897)
Whichford	Peter O'Kane (684888)	Sara Cole (686250)
Great Wolford	Lynn Mathias (674247)	Sue Finlay (661157)
Little Wolford	Vacant (currently under Community Governance Review)	

SW7 BENEFICE CHURCH NEWS

Did it really, actually happen? That is one of the questions that goes through my mind when I speak about the resurrection of Jesus on that first Easter Sunday. Did it happen? It's a hugely important question. In fact, on the answer to that question hangs the whole Christian faith. If Jesus didn't rise from the dead then Christians might as well give up go home and enjoy a lie in on Sunday Morning. The Christian faith stands or falls on the historicity of the resurrection.



The more I read about it the more I'm convinced that the resurrection did happen. There are two pieces of evidence that I find particularly compelling. The first is the empty tomb. No one not even Jesus's enemies, denied this reality. Jesus' body was never found. But surely,

you might say, his disciples came and stole it in the night. That explanation fails to account for the second piece of evidence; the change in Jesus' followers. They were transformed from a frightened band of demoralised individuals, convinced that their leader was dead to a group who boldly preached that the one they thought was dead was now alive and king of the world. The majority of the 11 disciples were so convinced of the reality of the resurrection that they proved willing to die for it at the hands of the Roman authorities.

Did the resurrection actually happen? I think there's enough evidence to believe it did. Of course, if it did, then it literally changes everything; about our lives, our world and our future. For there is one who has gone through death and come out alive the other side. One who now offers that same life to all who commit their lives to him.

Reverend Ben Dyson, SW7 Benefice



DO YOU ENJOY SINGING?

COME AND JOIN OUR NEW CHOIR

Our new choir in the South Warwickshire Seven Benefice will be singing at Evensong services in Long Compton and Barcheston in May, June, September and October.

Julian Grimshaw, the director of the Benefice Choir, welcomes singers of all ages, novices and experienced singers alike.

Please contact Julian for further information: jdwyergrimshaw@btinternet.com or 07891423855

MAY 2023 CHURCH SERVICES							
SW 7	St Martin Barcheston	St Lawrence Barton	St Barnabas & St Nicholas Burrington	St John the Baptist Cherington	St Peter & St Paul Long Compton	St Michael Whitchford	St Michael & All Angels Wolford
Sunday Worship							
7th May 5 th Sunday of Easter	9 am BCP Holy Communion (BD)		6 pm Songs of Praise Service (BD)		4 pm GAP Service (BD)		10:30 am CW Holy Communion (BD)
14th May 6 th Sunday of Easter			9 am BCP Holy Communion (BD)		6 pm Evensong (BD)	10:30 am CW Holy Communion (BD)	
21st May Ascension Sunday		9 am BCP Holy Communion (AWICLW)		10:30 am CW Holy Communion (AWICLW)	4 pm GAP Service (BD)		
28th May Pentecost Sunday				9 am BCP Holy Communion (BD)	10:30 am CW Holy Communion (BD)		



South Warwickshire Benefice

Reverend Ben Dyson Tel: 01608 628229 vicarsw7@gmail.com (off duty Friday)

Benefice Administrator: Mrs. Liz Clarke Tel: 07425868855 Email: officesw7@gmail.com

www.southwarwickshirechurches.co.uk

facebook.com/sw7churches

BD = Ben Dyson / M = Liz Maycock / AW = Anthony Welch / CLW = Claire Welch / HP = Heather Parkyn / AD = Andrew Dool / RS = Richard Smith / RB = Richard Stevens
BCP = Prayer Book / CW = Common Worship / GAP = Informal Service



Class 2 Mountaineering

Class 2 at Acorns enjoyed having a visitor to develop their knowledge as part of their Misty Mountain, Winding River topic. He came in to talk to the children about his experiences of mountaineering and brought in some equipment for the class to look at. It was interesting to see some of the equipment



previously discussed in geography, design technology and English lessons in the classroom and gave pupils more information about why certain equipment is so important when getting involved in a climbing or mountaineering expedition. The highlight for most of the class was getting out the

emergency shelters and racing against each other to see who could get their shelter set up the quickest!

Food Debate

In geography and PSHE, children in Class 3 at Acorns debated the motion: *'People should always buy and eat food that is grown in their own country'*. This was an excellent opportunity for children to practise their public speaking skills as well as their listening skills. Being able to interject and 'argue' coherently with justified points made for a very interesting debate. Children drew on their knowledge of importing foods from different countries, food miles and fair trade, to name just a few of themes upon which they built their arguments. For the debate, the class split into a Year 5 and a Year 6 group and then children voted for whether they supported the motion. It was a very close contest, but in the end, just one or two votes resulted in the majority saying that we should still import foods.

British Science Week

To kick start British Science Week, which ran from the 10-19 March, Acorns began with a whole school assembly. The children enjoyed listening to the story of the

endlessly curious Ada Twist from *Ada Twist Scientist* which is part of the excellent *Questioners* series.



This fitted really well with our value for this term '*Curiosity*'. Teachers also explored the theme of this year's Science Week, *Connections*, as well as conducting some fun kitchen science experiments. During the week, every class across the school conducted an investigation exploring connections between ourselves and the natural world, whether looking at the composition and the quality of the soil that we use to grow our plants in, exploring the weather, or using our senses to find out more about the food we eat. This provided the children with lots of opportunities to be curious and to ask questions to find out more.

As part of British Science week, Class 3 investigated the soil in two locations in the school grounds (the Science Garden and School Close) and then proceeded

to plant their pants! That's right...their pants, not their plants! This is national scheme and you can find out more by visiting: <https://www.countrytrust.org.uk/news/plant-your-pants>. The aim is to see what happens to the class's cotton pants over a period of eight weeks, so we can learn more about what's in our soil and how healthy our soil is. This links well with the school value of 'Curiosity' as the children think about what might happen and why.

World Book Day

This year, to celebrate World Book Day, the children and staff at Acorns had the opportunity to dress up as their favourite character from a book. We saw some fantastic costumes across the classes to help us to discuss a range of genres of books and celebrate reading in our classes.



Thank you to parents from Acorns and Brailes who were able to come into class to read with our children, share their own favourite stories and take part in our celebrations. A special mention and thank you to Jaffé & Neale in Chipping Norton, who helped our schools to ensure every child at Acorns, Brailes and Shipston Primary had their very own free book in exchange for a World Book Day voucher. Many thanks to Mrs. Warbrick from Shipston Primary School for organising.

Squirrels on the Farm

Thank you to the Cole family at Vicarage Barn from all the staff and children in Squirrels class. The children enjoyed a really informative visit where they met a lamb who had been born at 6am that morning, learned about what silage is and how it is mixed to create food for the cattle (after being grown and harvested from the fields on the farm last summer), they saw how the lambs and

ewes are numbered and sprayed and learnt more about wheat and barley, straw and hay. The children were fascinated with the machinery and equipment and thoroughly enjoyed every moment. Our visit was completed with an adventurous trek over the fields back to school, with the kind permission of the landowners. The weather was rather inclement on this particular Thursday and before we left the farm we had already likened our adventure to 'going on a Bear Hunt'!

Polar Explorers



Badgers Class at Brailles enjoyed meeting Will Pyke, who visited Antarctica last year. Will described his journey from the UK to Antarctica and showed it to the class on a map. He visited many of the places that the children have been learning about in geography lessons, especially those related to Ernest Shackleton and his doomed Transantarctic Expedition. Will shared with us photographs that he had taken of South Georgia, Elephant Island and Antarctica itself. Will described how the boat that he travelled on had been specially strengthened to move safely through the ice and he shared images of icebergs

and ice floes. He described the strict rules for visiting Antarctica and he showed us how special suits and boots had to be worn and cleaned before going on land so as not to introduce anything that could threaten Earth's last great wilderness. The children created some fantastic iceberg artwork.

Girls Football

Throughout the winter months up to 20 girls from Badgers and Owls class at Brailes School have taken part in weekly after school, girls football training sessions at school.

Over the weeks, skills really developed, alongside an understanding of rules, tactics, shinpads and football boots. There has been plenty of deliberate practise at scoring goals - a skill that our girl footballers found difficult in the Autumn term tournaments and were very keen to improve. Embracing the winter cold, mud and at times heavy rain, Brailes girls footballers have consistently shown grit, passion, love for the sport and super team spirit.

The end of the training season concluded with nearly all the girls in Owls and Badgers taking part in a 'Let Girls Play Biggest Ever Football Session' in the hail and snow on March 8. It was a great finale to the school football season. Well done to everyone who took part.

FARMING NOTES

Editor: **Lynn Mathias**
Email: [farming@swlink.org.uk](mailto: Farming@swlink.org.uk)



A Late Spring

As farms all over the country are finding, it has been impossible to do any of the normal spring work. This time of year is normally a real rush to fertilise, drill (sow) any spring crops and keep on top of the spraying programme but very little of this has been possible.

Some early fertiliser went on the winter crops and they are showing the benefit but follow on applications are now due. Not only has the ground been much too wet for implements to travel or work, the soil (as I write mid-month) is still cold.

We are away next week so are hoping that the promised warmer weather is coming and as soon as it does you will see tractors everywhere trying to catch up with overdue jobs. We have put a few of the younger cattle out and they are pleased to be on the grass and the bigger stores (older cattle) will probably be

out by the time we get back, the farm mixed barley ration will have run out by then and they are looking longingly out of the barn at the grass already.

After our TB breakdown just before Christmas we have now had the first of our follow-on tests, 60 days after the breakdown, and rather to my surprise we had no reactors so will keep our fingers crossed that the next test, 60 days forward again, is also clear.

By the time you read this the regulation requiring all domestic poultry to be housed should have been lifted. Avian flu is still around, but there is now only one breakdown a week which is apparently sufficient for the ruling to be removed although I am sure the powers that be would like there to be none. We are going to the Isles of Scilly for our holiday and are hoping to see the puffins and other wild birds which nest on the islands, I know avian flu had reached the islands when we were there in the autumn but are hoping that the devastation in the bird population is not too great.

Lynn Mathias farms in Great Wolford

NATURE NOTES

Editor: Tony Partridge

Tel: 684698

I stand at the edge of my lawn and barely a yard to my left a robin is perched on a bush chirping out its merry notes. These notes can be barely called a song compared with those operatic songbirds the thrush and the black bird. Yet his



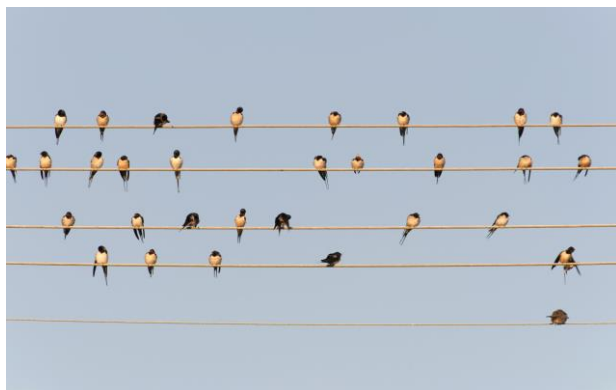
chirping is a loud and merry one. He calls for a few moments and then is up and away but only for a few yards where, from another bush he repeats his merry call. It is quite understandable why this bird maintains a very high place in our hearts. What better bird would be placed on the front of Christmas cards than this one is, or be the subject on so many birthday cards? A book on birds I

have actually entitled it as the redbreast (the French though call it a red throat!). Although most robins are resident, we also receive a few migrants in the summer. They nest in late spring preferring to do so in a hole in a bank or tree, though old shoes or old hats have sometimes been chosen residences! The sexes are alike, and they pair at the beginning of spring or even late winter. I have a strong feeling that the above-mentioned robin nests in the churchyard next

door to my cottage. Its song is a series of calls although I am told a species of African robin switches its tune if it imitated by a male rival. An 18th century nursery rhyme poses the question '*Who killed Cock Robin*'. The guilty answer coming from a bow and arrow armed sparrow!

By the time you read these Notes, the grasses on the roadside verges will have started their spring growth. Their seeds are blown into the air and distributed about the countryside. As with many wild plants, our ancestors gave some of them names where they are familiar with their surroundings. One such early grass you will see will be Meadow Fox Tail, so called as our ancestors compared this grasses seed head to a fox's tail. The flowering head of this grass consists of seed heads closely compacted together up the grasses head. It is not a grass with any great nutritional values so I don't think at present you will find it on any farmer's list for planting a grass ley!

I have not seen yet any figures regarding the arrival the of migrants. So have no idea if there are more or less than usual. So many factors are involved in these migrations not least of all the breeding success of birds in their native lands and their survival come here. They are all welcome here of course and provide us with added pleasure when we have martins nesting in the eaves of our houses



and swallows nesting as they so often do in buildings such as open barns. They collect a number of insects in their beaks when feeding their young when they will go on and distribute these insects among open mouths. As for some martins, we regularly saw them when on our Welsh

holiday and observed how they had nested in the cliff face near to where we would sometimes walk. Indeed, the arrival of swallows perhaps for most of us foretold the arrival of spring itself!

Before we understood about how swallows lived with us it was believed that they would shelter in holes under the ground when it disappeared in the autumn. And if you were Irish beware! For were the swallow to pull a hair from your head (highly improbable but there we are) you would be doomed to hell forever!

Tony Partridge

GARDENING NOTES

Editors:

Margaret Welsh, Long Compton Garden Club

Miranda Arnold, Whichford Amateur Gardener

Well, here we are in May, hopefully in true spring, after the wet and cold weather we've endured for the last couple of months. It's really been holding plant development back, and germination has been slow, if not non-existent. Here's hoping the longer hours of daylight, increased sunshine, and seasonal warmth will kick start the garden. My indoor-sown seeds have all become leggy from insufficient light, and I am desperate to get them outside.

Assuming the weather does what it's supposed to do in May, we can start sowing outdoors in cold frames or an unheated greenhouse, and in some cases, in the ground. You can sow beetroot, radishes, and rows of lettuces and carrots. It's your last chance to sow sweetcorn, if you have the space for them. I grew sweetcorn once, and the ears were looking magnificent. Until I picked one, opened it up, and found a massive grey maggot inside. Revolting! Maggots were in all the ears, so we had to throw them all away.

If you've already managed to sow radishes and lettuces and achieved a satisfactory level of germination, start thinning out the seedlings now. Earth up your potatoes as the leaves start to emerge from the soil. And keep watering, especially after a week or so of no rain. Try to water early in the morning or in the early evening, when the sun has moved off your beds, in order to minimise evaporation and waste.



You can also start to sow annual flowers: sunflowers for the sheer glory of the big flower heads, scabious and verbena for the bees and butterflies, and nasturtiums to divert the blackfly from vulnerable vegetable crops like broad beans.

Other pests will start to arrive, but generally speaking there's absolutely no reason to use pesticides of any sort on your garden. You can wash greenfly off with warm water and washing up liquid, or just leave them to be food for the ladybirds, lacewings, and hoverflies. I've seen blue tits do a very good job of eating the greenfly off my gooseberry bushes. I must confess, however, to using

slug pellets round my most vulnerable seedlings and plants. We're experimenting this year with anti-slug pellets made from wool. They claim to stop the slugs getting near the plant, and then they'll break down and add organic matter to the soil. Let's see how they do. (I'm also using the organic blue pellets around my precious sweet pea seedlings, so I'm not a purist on this point.)

You can put your dahlias out now and remember to put the staking in at the same time before you get too much growth. Keep pinching out the side shoots of cordon-grown sweet peas to get really high-quality blooms. Feed the dying spring bulbs, with a good liquid feed like seaweed or tomato feed, to give them a boost for next year. And then lift, separate, and replant the larger clumps of bulbs. Deadhead them, but let the foliage die down naturally. While you've got your liquid feed out, give some to your container plants too, to maximise your container-grown displays.

Miranda Arnold

Can You Help?

After a commendable 10 years writing our monthly Farming Notes, Lynn Mathias has decided it is time to put down her pen. So, we have an opening for an author! If you are a local farmer interested in sharing your experiences, ups and down and funny moments, do get in touch. Alternatively, if you are a conservationist, environmentalist or perhaps a local ranger this is a great opportunity to share your knowledge. Do get in touch if you think you can help. In the meantime, Lynn will continue to write for us every other month until we find a replacement.



Many thanks Lynn, for sharing your farm with us through the years!

Sara Billins editor@swlink.gmail.com





**Please come and join
the Barton-on-the-Heath celebration
of the Coronation of His Majesty The King
and Her Majesty The Queen Consort
on Sunday 7th May 2023**

By kind permission of Hamish & Gillian Cathie, a bring-your-own picnic lunch will be held on the lawn of Barton House (tables and chairs will be provided)

**Bring your own picnic and drinks;
& also a pudding, cake or some cheese for the sharing table;**

arrival 12 noon

lunch 1pm

toast for the King and Queen Consort 2pm, followed by pudding

**RSVP with numbers to
julia.bartonparishcouncil@outlook.com
by the 15th April**

Villagers, their family and guests are all very welcome



It would be very nice to be able to give everyone a glass of fizz on arrival, and for the toast later on. Rather than charging for entry in order to provide this, we are making the customary plea for any donations of some fizz (or some cash for us to buy some)... Please contact julia.bartonparishcouncil@outlook.com, or cash could be transferred direct to the Barton-on-the-Heath Village Fete bank account, sort code 30-95-75, account no. 01231971 (and in the happy event that more money is donated than needed, it would go into the "pot" for the Fete, on the 17th June). Huge thanks!
Jules, Suzie, Helen and Cathryn

Beneficial Book Club

We enjoyed meeting to talk about “*Shuggie Bain*” by Douglas Stuart. Set in ‘80s Glasgow, this book shows us the brutal poverty of housing ‘schemes’ on the outskirts of the city, the landscape being of slag heaps left after the closure of coal mines.



Our hero is little Shuggie who remains to look after his alcoholic mother, her chaotic life swinging between proud sobriety and descent into alcoholism and death. The language used is local to the area and some found difficulty with this but still felt the book to have been well-written. The novel won the Booker Prize - whether it was deserved or not was a great subject for discussion.

Next meeting: Sunday 14 May at Barton House at 5.30pm to talk about ‘*Fresh Water for Flowers*’ by

Valerie Perrin. We are reading the English translation, but it could also be read in the original French! Happy reading.

Gillian Cathie

Meeting King Charles III

Karyn Sassella, who lives in Barton-on-the-Heath, met both the late Queen

Elizabeth and King Charles III in her role as a Humanitarian Aid Worker.



She says” *I was awarded the Dunant Award by the British Red Cross for my humanitarian work and it was presented to me by King Charles III at St*

James Palace. It was a lovely meeting and we spoke of the work of the Red Cross and about his upcoming trip to my native Australia.”

Barton-on-the-Heath

Village

FETE

Saturday 17th June

2.30-6pm

on the village green

LIVE
Jazz

FREE
ENTRY

Barton Village
PRODUCE

TEA & CAKE

fish &
chips

AUCTION

book stall

BAR

PRE-LOVED
DESIGNER CLOTHES

Childrens'
tombola
& games

Bric-a-brac

RAFFLE **TOMBOLA**



@bartonontheheath

Remember – you can opt for the online LINK and stop or retain your printed copy through the door. It's your choice. Annual Subscription for 'online only' is half that for the printed magazine so sign up today and never have to search the house for your paper copy!

LINK

<https://www.swlink.org.uk/>

LINK

Email online@swlink.org.uk for more details



St Martin's, Barcheston

2023 ORGAN RECITALS

- 7th May: Paul Hale (Organist Emeritus, Southwell Minster)
- 4th June: James Lancelot (Tewkesbury Abbey)
- 2nd July: David Cook (All Hallows by the Tower)
- 6th August: Donal McCann (New College, Oxford)
- 3rd September: Thomas Keogh (Holy Cross Priory, Leicester)
- 1st October: Alexander Pott (Magdalen College, Oxford)
- 5th November: Pavlos Triantris (St Alban and St Henry V1, Letchworth)
- 3rd December: Daniel Moulton (Royal Birmingham Conservatoire)

**Recitals are on the first Sunday of the month
(May to December) at 3.30pm**

VILLAGE NEWS

BURMINGTON

Editor: [Graham French](#)

Email: burmington@swlink.org.uk



BURMINGTON VILLAGE

CORONATION GATHERING



SATURDAY MAY 6TH
2 PM ONWARDS

COME ALONG AND JOIN IN SOME FAMILY FUN AND GAMES ON
MICHAEL'S FIELD – MARQUEE PROVIDED
ALL WELCOME – NO ENTRY CHARGE !!

BRING YOUR OWN PICNIC AND DRINKS (AND CUPS !!)
TEA/COFFEE AND SOFT DRINKS WILL BE PROVIDED AS WELL AS
TABLES AND CHAIRS



FOLLOWING THIS THERE WILL BE SOME 'WATERY FROLICS' SO
PLEASE BRING YOUR WATER PISTOLS AND SUPER SOAKERS FOR A
WET AND WILD SHOOT OUT!!

(N.B. THIS WILL BE SUPERVISED BUT PARENTS MAY WISH TO BRING
SPARE CLOTHES!)



BURMINGTON VILLAGE

CORONATION BREAKFAST

BANK HOLIDAY MONDAY MAY 8
10-12PM

COME ALONG AND SAVOUR A HOME-MADE BREAKFAST BAP
ON MICHAEL'S FIELD – MARQUEE PROVIDED
ALL WELCOME

BACON/SAUSAGE BAPS OR PANCAKES WILL BE
AVAILABLE FOR £3- VEG/GF AVAILABLE FOR BAPS
TEA/COFFEE AND SOFT DRINKS WILL BE PROVIDED AS
WELL AS TABLES AND CHAIRS

AT 11AM WE HOPE TO BE ABLE TO TAKE A GROUP
PHOTOGRAPH FOR THE VILLAGE RECORDS.
WE LOOK FORWARD TO SEEING YOU.

CAMEO LUNCH CLUB

The next CAMEO meeting will be a tea party in celebration of the Coronation in a marquee in Michaels's Field, Burmington on Friday 5 May

Please book with Brenda on Tel: 664313

CAMEO's 15th Birthday celebrations



At the March meeting CAMEO members celebrated the 90th birthday of popular member Phil Batsford BEM (far right)



Burmington Barn Smallholding

The Barn will be taking orders for the next batch of pork around mid-May.



Please get in touch if you're interested! Once we have firm dates it will be posted on our Facebook page.

Finally, on 29 July the Barn will be hosting a Summer 'do', we'd love to hear from anyone who would be interesting in hosting a stall or activity.

If you'd like to talk more about any of the above, please do drop us a

line on 07368 431215 or 07496 859226.

Nat and Bex.

**BURMINGTON
PARISH MEETING
AGM**

TO BE HELD

WEDNESDAY 24th MAY 2023

7.30pm VILLAGE HALL

ALL WELCOME

www.parish-council.com/BurmingtonParishMeeting

Obituary: Remembering John Bradley

Long-time Burmington resident, local architect and passionate cricketer who sadly passed away on 2 March.

John was born at Ellen Badger hospital on 16 June 1948. His formative years were spent in Burmington with his parents Herbert and Edith and his sisters Elizabeth and Sarah.



John went to Shipston Primary School in 1953 and moved up to the relatively new High School in 1959. Imagine John's joy when he realised they had a farm at the school. He loved nothing more than helping out whenever he was given the opportunity.

He loved all sports at school but was less interested in learning the "three R's" and left school at the age of 15 without taking any exams. Fortunately, in those days, getting a job was quite easy and he started working life at A R Taylor's garage - in the stores department.

But he soon got itchy feet and wondered whether he could put to good use his love of technical drawing and innovative ideas. He applied to Earp Badger and Cross Architects in Church Street, Stratford, joining the firm in their drawing office. He soon realised this was his calling in life. As he became increasingly more proficient, he was given responsibility for the modernisation of a large number of social houses in the area.

John was a keen sportsman and loved soccer. However, his first and greatest love was cricket: the first recorded mention of John is in 1962 when he played for Shipston Juniors at the age of 14. John was blessed to fall under the tutelage of some of the greats of Shipston Cricket Club and he soon progressed into the senior teams, becoming an accomplished batsman.

Many happy hours were spent practising at the cricket club but on one occasion. John suddenly developed a great interest in tennis after spotting a certain Susan Patrick.

He and Sue dated over the next three years, while Sue went to Warwick University to train as a teacher while John was becoming a very accomplished architectural technician.

On 23rd October 1971, John and Sue were married at St Edmunds Church and set up home initially in a rented cottage in The Lane, Burmington and in May 1974, they bought their first home - 11 Watery Lane, Shipston. The house needed a lot of renovation, but John was in his element, knocking down walls and moving the bathroom upstairs.

Rebecca was born on Christmas Eve 1975 four weeks after John found himself unemployed, through no fault of his own. So began John Bradley Associates - from the dining room table.

Daughter Catherine followed in October 1977. By 1980 John was becoming increasingly involved in the community. He was involved in the Twinning Association, making new friends on the other side of the Channel. His other pursuits were Stour Valley Lions, various fundraisers, the local raft race, and pig roasts in the Square. Busy though he was, John found the time to become a special constable, a role, he claims, he only took because of the free beer on offer.

By now John Bradley Associates was starting to thrive and Steve Chance joined in 1984 and would remain with John for nearly 25 years.

The business went from strength to strength and Sam Russell and Mark Wildish joined the company in 1990. It remains a testament to the type of boss John was that both Steve and Mark stayed with him until he retired in 2008. This was, in no small part, due to the fact they all shared the same silly sense of humour.

John built a reputation for his sensitive design of barn conversions, using reclaimed materials where possible, almost unheard of in those days. His award-winning developments at Carters Leaze, Great Wolford received national recognition for JBA and John received an accolade for innovation. Other developments of note include, the old Council House, Rectory Court, Spinners Bridge and Telegraph Street, all in Shipston.

John and Sue had by now moved back to Burmington, to "Long Barn" where they gathered a reputation for hosting amazing parties.

John's other passion was gardening and growing vegetables in his famous greenhouse. Visitors were often given bags of fruit and vegetables to take home.

An extremely proud family man, John took great pleasure encouraging all of his grandchildren, Jake, Molly and Lola, nephew Joe and niece Kate to always reach for the stars, whatever they did in life.

Only last year, John was made a lifetime member of Shipston Cricket Club for faithful and committed service to the club for nearly six decades. This is the highest award given to dedicated long serving members and John was very moved and emotional to receive this accolade.

Since his playing debut in the sixties, John has been a player, umpire and committee member and held the offices of president, chairman, vice chairman, secretary, assistant secretary, 2nd xi captain, 2nd xi vice-captain, 1st and 2nd xi umpire, plus huge input with the junior section as a benefactor, umpire and enthusiastic supporter.

He will be remembered and much missed as a true champion of Shipston CC and many other organisations in the area and, not least, by Burmington villagers.

(This is an edited version of a tribute by John's friend, Roger Wickson at the Service of Thanksgiving)





Cherington and Stourton Coronation Celebrations



Please come along to our village picnic on Sunday 7 May at 12.30pm in the playing field or hall if wet. Bring along your picnic hampers, tables, chairs, or blankets.

We will have a rerun of tug of war Cherington v Stourton and games for the children.

There will be a competition for a decorated wheelbarrow and then we will have a wheelbarrow race around the playing field and hall grounds.

Tea and Coffee will be available in the hall but please can I ask you to bring your own cups to save anyone having to wash up.

If you need a lift or a chair and table, please contact me on 07866 127409

Christine Dudfield



Celandines in Cherington churchyard by Paul Marriott

Coronation Quiche



Serves 6

Ingredients

Pastry	Filling
125g plain flour	125ml milk
Pinch of salt	175ml double cream
25g cold butter, diced.	2 medium eggs
25g lard	1 tablespoon chopped fresh tarragon,
2 tablespoons milk	Salt and pepper
Or	100g grated cheddar cheese,
1 x 250g block of ready-made shortcrust pastry	180g cooked spinach, lightly chopped
	60g cooked broad beans or soya beans

Method


1. To make the pastry:
 - a) Sieve the flour and salt into a bowl; add the fats and rub the mixture together until you get a sandy, breadcrumb like texture.
 - b) Add the milk a little at a time and bring the ingredients together into a dough.
 - c) Cover and allow to rest in the fridge for 30-45 mins.
2. Lightly flour the work surface and roll out the pastry to a circle a little larger than the top of a 20cm flan approximately 5mm thick.
3. Line the tin with the pastry, taking care not to have any holes or the mixture could leak. Cover and rest for a further 30 minutes in the fridge.
4. Preheat the oven to 190°C.
5. Line the pastry case with greaseproof paper, add baking beans and bake blind for 15 minutes, before removing the greaseproof paper and baking beans.
6. Reduce the oven temperature to 160°C.
7. Beat together the milk, cream, eggs, herbs and seasoning.
8. Scatter 1/2 of the grated cheese in the blind-baked base, top with the chopped spinach and beans and herbs, then pour over the liquid mixture.
9. If required gently give the mixture a delicate stir to ensure the filling is evenly dispersed but be careful not to damage the pastry case.
10. Sprinkle over the remaining cheese. Place into the oven and bake for 20-25 minutes until set and lightly golden.

Coronation Strawberry and Ginger Trifle



Serves 8

Ingredients

For the Yorkshire Parkin	For the Strawberry Jelly	To Serve
150g golden syrup 150g unsalted butter 40g black treacle 150g soft brown sugar 150g self-raising flour 115g oats 2 whole eggs 8g ground ginger 1.5 tsp ground nutmeg 1.5 tsp mixed spice	350g frozen strawberries, defrosted and blended 125g caster sugar 6 gelatine leaves	150g frozen strawberries Chopped nuts 
For the Ginger Custard	For the Cream	
8 egg yolks 130g caster sugar 100g plain flour 500ml whole milk 1tsp ground ginger	300g cold double cream 50g icing sugar 1 scraped vanilla pod	

Method

Parkin: Melt the butter, syrups and brown sugar in a saucepan. Place all the dry ingredients into a mixer, on a low speed, and combine them. Add the wet ingredients and mix until incorporated. Finish with the eggs and beat for 5 minutes, until smooth and pale. Bake in a lined 900g loaf tin, at 160°C, for 25 minutes.

Jelly: Soften the gelatine in a bowl of cold water and squeeze to remove all the water. Warm the blended strawberries in a saucepan with the sugar and the gelatine. Pour through a fine-mesh sieve or coffee filter, to make the liquid become clear.

Custard: Place the milk and ginger into a saucepan and heat until just before it reaches the boil. Whisk the egg yolks and the sugar together, add the flour and then add the milk. Pour into a saucepan, cook on a low heat and whisk for 5 minutes until the custard thickens. Chill down in a tray and cover with greaseproof paper, to cool.

Cream: Add the icing sugar and vanilla seeds to the cream. Whip the cream to stiff peaks, then transfer to a piping bag for serving.

To Finish: Dice the Parkin into chunks and add it to the bottom of the glass. Place a few of the defrosted strawberries on top. Pour the strawberry jelly into the glass, over the defrosted strawberries and diced Parkin, and transfer to the fridge, to set. Spoon a layer of ginger custard onto the top of the jelly. Pipe dots of the cream on top, until the whole glass is covered. Garnish with the chopped nuts.

Brailes Picturehouse

Saturday 20 May - *Richard III. The Lost king*

The Lost King tells the remarkable true story of how one 'ordinary' woman discovered the long-lost remains of King Richard III In 2012, having been lost for over 500 years, the remains were discovered beneath a carpark in Leicester. The search had been orchestrated by an amateur historian, Philippa Langley, whose unrelenting research had been met with incomprehension by her friends and family and with scepticism by experts and academics.

The life-affirming true story of a woman who refused to be ignored and who took the county's most eminent historians, forcing them to think again about one of the most controversial kings in English history.

Cast: Sally Hawkins, Steve Coogan, Harry Lloyd

Future Date - Saturday 17th June - *Mrs Harris goes to Paris.*

Doors open 7.15pm. Film starts at 7.45pm

Deirdre and Team

Feel Good Friday Social Afternoons

It was a Full House for the Easter Bingo on Thursday 30 March, thank to everyone who attended, it was a great afternoon.



Dates for your diary
are Fridays 12 and 26
May and 9 and 23
June from 2.00pm at
The Hall, Pinfold Lane,
Stourton, CV36 5HG.

For more information,
please contact me on
01608 663320

Vanessa Compton

Plant & Home Produce Sales 13th & 14th May



For more information please visit
www.shipstonhomenursing.co.uk/events

At The Paddock, Stourton

Donations of Plants & Produce would be gratefully received. Thank you.

Christine Dudfield

Coronation Memories of Queen Elizabeth II

I was married in 1952 and, with my husband Jim we were able to buy a television in 1953 so that we could watch the Queen's Coronation. In those days few people owned a television as they were quite expensive and of course only black and white and very small compared with the ones we can buy today.

Our neighbour Harry Compton along with his son Harry, who was visiting that day came round and watched some of it with us.

It was a very memorable day.

Evelyn Wright

ART IN THE HALL

THE STOURTON MARK MAKERS

FRIDAY - MONDAY

JUNE 9TH - 12TH

10.00AM - 4.00PM

Paintings:- oils, acrylics, watercolours, mixed media.

Cards, cakes, tea and coffee available.

THE HALL, STOURTON & CHERINGTON
CV36 5HG



By Stourton Artist Colin Beckett

Cherington and Stourton Community Wildlife Group



Leave your lawnmower in the shed throughout May, thereby allowing wild plants to thrive and provide nectar for insects.

The idea for No Mow May was started by the botanical charity Plantlife in 2019 and in the past three years the number of people not mowing their lawns in May has trebled. Changing the way we look after our gardens collectively makes a difference.

Since the 1930's nearly 7.5 million acres of flower rich meadow and pasture has been lost, and this has a cascade effect on our wildlife, with fewer pollinators and fewer Insect eating birds. However, we can all help by doing nothing this May! Take a break from your regular lawn mowing schedule and help our wildlife at the same time, by helping to provide a nectar feast for pollinators, such as honeybees, bumblebees, solitary bees, butterflies, moths and beetles. Plants considered weeds by many should be welcomed in our lawns this summer, especially those such as dandelions which provide important nectar for pollinators.

Plantlife is quoted as saying that just eight dandelion flowers may produce enough nectar sugar to meet an adult bumblebee's baseline energy needs in a day. One 100sq meter area of unmown grass could produce enough pollen and nectar sugar to meet the needs of six bumblebees a day, and contrary to what

some people may think, bumblebees are our greatest pollinators, and they are in serious decline.



In April/May the Queen bumblebees emerge from a winter of hibernation. They are the only bee that hibernates all winter and when they emerge from their underground nests, weak and desperately in need of nectar to give them the much needed energy to build new nests, lay their eggs, and start a new colony, early spring wildflowers could be their life

saver. That is why our early native wildflowers are so important.

It will be hard for many 'tidy gardeners' to adopt a 'no mow' way of thinking, but it really is becoming more and more important for all of us to try to adapt for the sake of the future of our wonderful planet.

If you cannot bear to live for a month with an unmown lawn, then perhaps just put aside one area of your garden or lawn to re-wild. Embracing a little more wildness in our gardens can be a boon for all insects, and you might be surprised at how attractive plants, considered as weeds by many, can be. Once May is over, think about mowing less often, let your lawn grow a little longer and be proud that you are playing a small part in regenerating our wildlife.

Sue Williams



Wood anemones in Cherington Churchyard by Paul Marriott

Coffee Shop Saturday 20 May

10.30am-12 noon

at The Hall, Stourton

CV36 5HG



Sue Williams from the Cherington and Stourton Wildlife group will be present, selling locally made wooden Hedgehog Houses, for the very reasonable price of £25 each. They are very attractive with an entrance and two compartments and are stained dark green. Sue has been using one of these houses for two years, and her wild hedgehogs approve of the design, and one has hibernated in the house this winter. Sue will also have a sample of an easily homemade hedgehog feeding station, which allows hedgehogs to feed inside without cats or birds getting at the food.

Sue is an approved hedgehog foster carer for Warwickshire Hedgehog Rescue, and can give advice about the best place to site a house in your garden and the best food to encourage hedgehogs.

This month we will also be having a Bring and Buy in aid of the playing field fund so please come along and support us. We are always open to new ideas: would you like something different on the menu? Would you like to help out occasionally? Would you like a craft stall? Please contact us at christinedudfield53@gmail.com or

Christine on 07866127409 or Tricia on 07828 697304

Village Lottery

April Draw

1st Eric Clubley £80 2nd Chris Owen £45 3rd Louise Weston £30

Congratulations to our winners and thank you for your continued support. For more information on joining, please contact me 686293 or steveallkins53@gmail.com

Steve Allkins

VILLAGE NEWS

LONG COMPTON

Email: longcompton@swlink.org.uk

Long Compton Village Hall

It's not often the village hall hosts an event that leaves its attendees hobbling for the next 48 hours or so, but now it's happened. The 70's Disco was well attended and received very positive feedback from the crowd, although a common theme was *"Dancing seems to take a lot more effort than it used to. I couldn't walk for the next couple of days!"* I didn't

realise ABBA could be so polarising. Every time Keith spun an ABBA disk, as many dancers rushed onto the floor as those who slunk off (you know who you are!). Other popular bands were The Sweet, The Osmonds and Mud and who would have thought the night would finish with a slow dance to Led Zeppelin? Only in Long Compton!!



Social Saturday

13th May, 11am

Entry Free!

Hot and cold drinks, homemade cakes and savouries

Come along for a natter with friends old and new!



join the celebration. Create some memories with your family and friends. *"Remember the fabulous lunch we had to celebrate the King's Coronation? We even had a dance to Keith's legendary disco!"* You don't need to worry about the weather, the hall, marquee and bar are available to all and open from 12.30pm so just pitch up.

In other news, the decorating is finished, a new CCTV system has been installed, a quiz is being planned and we're gearing up for the Coronation

Bring and Share Big Lunch Party on Sunday 7 May (see separate advert).

Do come along and

Mo Read Chair, Long Compton Village Hall



LONG COMPTON CELEBRATIONS AT THE VILLAGE HALL

Bring and Share
Big Lunch Party!

Bring a dish to share
Pay bar
Fancy dress as King or Queen
Best fancy dress prize
Fun maypole dancing



Sunday 7th May 2023
12.30pm until 4pm

Free entry
Contact Mo Read to reserve
a table for a street
07814 802814
Or turn up on the day



You are invited to attend the
Long Compton Village Hall
AGM

on
Saturday 13th May at 12 noon

Come along to the Village Hall to hear what we've been doing to maintain your Hall and our future plans. This is your chance to let us know how we're doing, offer to help and suggest anything else you'd like to see happening at your hall.

100 Club

The April Draw was done at the Village Hall Social Saturday on 8 April, and the winners were:

1st Prize: 60 Laura Coombes 2nd Prize: 197 Alexandra Herbert

3rd Prize: 97 Alan Taplin 4th Prize: 41 Beryl Compton

The next Draw will be done during the May Social Saturday. Tickets are still available, at £9 for the remaining 9 Draws.

Bridge Club

The Bridge Club in the Village Hall is thriving. We meet every 2nd and 4th Tuesday – beginners welcome. Please contact me for further details.

Chris Galloway 684234



Long Compton Chapel



Bank Holiday Monday saw the chapel providing the perfect showcase for local artists and artisan crafters. Work included a beautiful painting by Frances Boyle of the chapel's organ pipes and we were very pleased that this was purchased by an appreciative villager. The many visitors were all impressed by the range of work available from both local professional and amateur artists and suitability of chapel as an arts venue.

The next Art and Craft Market will be on Sunday 4 June – 2.00 -5.00 pm. If you would like to exhibit please contact Elizabeth.



The Chapel is again hosting a Plant and Produce Stall for Shipston Home Nursing from 13 May and welcome donations. Please contact Elizabeth to arrange delivery or collection.

@THE CHAPEL
1820-2023
BUTLERS LANE, LONG COMPTON
A PRESENTATION OF
A history of the first 100 years
Friday 19th May
7 for 7.30pm
CHEESE AND WINE SERVED
Part of our Bicentennial
Celebrations
For catering and seating purposes please
RESERVE YOUR COMPLIMENTARY
TICKETS
Elizabeth Gilkes 07791 621778 / Sally Franklin 07870 545431
Longcomchapel@hotmail.com



SATURDAY 24 JUNE 2023 2.00pm

CAR BOOT SALE

Cars £10; Vans £20

On the day: Cars £15; Van's £30

Entry from 12 noon

Public entry strictly from 1pm.

Pitches booked in advance (Sally 07870 545431

longcomchapel@hotmail.com)

HAVE A GO FLOWER ARRANGING CHALLENGE

Using flowers and Props provided.

THEME 'A Summer Garden'

Entry £5

Start 11am,. Judging 12noon

Yours to take home (on display 2pm- 5pm)

Details/booking: Elizabeth 07791 621778

longcomchapel@hotmail.com

ALL MY OWN WORK— A Village Aspect

An item relating to Long Compton

Any medium:— Photo - Painting- Sculpture- Craft

Free Entry

Categories: Primary School Age and Adult

Entries by 11am, Judging 12noon

Details: Elizabeth 07791 621778 Sally 07870 545431

longcomchapel@hotmail.com



IT'S THAT TIME OF YEAR AGAIN!

Time to enter your best items be they grown or made.

Classes have deliberately been kept simple and there will be a set entry fee of £2.00 to cover costs (for any number of entries) and prizes will be in the form of Award Certificates.

A CUP WILL BE AWARDED FOR THE MOST AND BEST ENTRIES BY ONE PERSON

PLEASE DO NOT REMOVE your entries until the show finishes at 6pm on Saturday 29th July.

REFRESHMENTS AVAILABLE

Entries to be staged from 4-6pm on Friday 28th July or from 9am to 11am on Saturday 29th.

To help us allocate space, advance notice of classes you intend entering would be appreciated.

Show schedule and entry forms will be delivered in June and also available from The Stores,

The Chapel or longcomchapel@hotmail.com

CLASSES YOU CAN ENTER

WINES & LIQUEURS

- W1 Bottle homemade slow gin
- W2 Bottle of home made fruit liqueur

BAKING

- B1 A Classic Victoria sponge
- B2 A savoury tart
- B3 A plate of cheese scones
- B4 Lemon drizzle cake
- B5 A plate of flapjacks
- B6 A plate of Choc. Brownies

PRESERVES

- P1 Jar of jam
- P2 Jar of pickles
- P3 Jar of chutney
- P4 Jar of marmalade

FRUIT AND VEGETABLES

- FV1 Vegetables in basket/box
- FV2 Collection of fruit, in basket or box
- FV3 Collection of culinary herbs
- FV4 A plate of soft fruit

FLOWERS

- F1 A vase of garden flowers
- F2 One specimen bloom
- F3 Vase of roses
- F4 Fragrant rose
- F5 A pot plant

FLORAL ART

- FA1 In the green - leaves and flowerheads
- FA2 Fit for a King
- FA3 Japanese Inspired
- FA4 Arrangement in any milk container

ART

- A1 Painting- flowers
- A2 Painting- landscape
- A3 Painting- something living
- A4 A portrait

CRAFTS

- C1 An item to wear
- C2 Greeting card—any medium
- C3 An item to display - textile
- C4 An item to display - other media

PHOTOGRAPHIC ART

- PA1 Sunset
- PA2 Season
- PA3 Transport
- PA4 Holiday

The Comptonians

On May 17 we are going to the New Inn at Clifford Chambers for a carvery lunch. The coach will leave at 11.30 am.

Margaret Welsh 684238

Long Compton and District Garden Club

Summer Outings

Saturday 27 May

Garden of Heroes and Villains

This garden, created by Felix Dennis has one of the largest bronze sculpture collections in the U.K. featuring history's greats, from Bob Dylan to Galileo. The garden has a handsome selection of specimen trees, a series of ponds, a yew maze, and a Japanese meditation garden. The Shard Garden contains a display of 44 large shards embedded in the ground inscribed with lines and verses of Felix's poems.

£16.49



Monday 12 June

Evenley Wood Garden and Buckingham Nurseries

This 60-acre privately owned woodland garden contains a large and notable collection of plants, ranging from unusual trees and shrubs to a wide selection of lilies and other bulbs. Take a picnic.

£8.50

Thursday 20 July

Sudeley Castle and Gardens

Set against the backdrop of the majestic castle, there are 10 magnificent, award-winning gardens. Sudeley Castle is also the only private castle in England to have a queen buried within its grounds. The 15th century St Mary's Church contains the tomb of Katherine Parr, the last of Henry VIII's six wives.

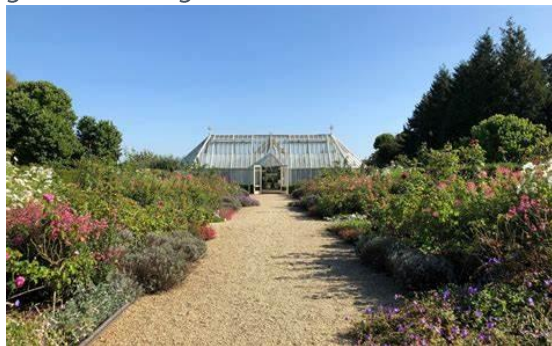
£14.00

Wednesday 9 August

Eythrope Walled Garden at Waddesdon

Tour and lunch

Only open one day a week and for private tours. Eythrope is a four-acre walled garden with glasshouses and orchard. Miss Alice de Rothschild , creator of



Eythrope, was a passionate and knowledgeable horticulturalist, renowned for her perfectionism and innovation. The walled garden at Eythrope was and is a productive garden, which supplied vegetables, fruit, herbs and cut flowers for her household, friends and family. Today, alongside the family,

produce is used in Waddesdon's restaurants, hotel and food markets. A working garden on this scale is rare in the 21st century and Eythrope is legendary in the garden world for the excellence of gardening and as a haven for traditional techniques that might otherwise be lost.

£45 (20% reduction for RHS members)

More details nearer the time. Car share encouraged.

If interested contact Lesley Roberts 01608 684 545 or 6@gmail.com

lesleyroberts46@gmail.com or Anthony Wells 01608 684337

Long Compton
book club

Our next meeting is on Thursday 11 May at 7.00 pm


We will be discussing *The Tidal Zone* by Sarah Moss

I am, I am, I am - Seventeen Brushes with Death by Maggie O'Farrell

All Welcome

Contact: Imogen Brown 07710129181 or brownimogen@gmail.com

The Friends of Long Compton Church
present




The Bird Fancier's Delight

17th & 18th Century music on an avian theme



Sounds Historical

Heidi Fardell - Recorders, Baroque Flute
Mary Tyers - Recorders, Baroque Flute, Voice
Lynda Sayce - Theorbo, Lute, Baroque Flute, Recorders
Alison Kinder - Viols, Recorders

Saturday 13th May 7pm (door open 6:30pm)
 St Peter & St Paul's Church, Long Compton, CV36 5JJ

Preceded by short AGM and Fork Supper. Tickets: £18 including supper (£15 if bought before 1st May). Eventbrite <http://bit.ly/3GGIIeE>
 Email friendslongcompton@gmail.com Or call Paul Field 01608 684286

FLCC Registered charity no: 1121888

Village Organisations

Long Compton and District Garden Club	Anthony Wells 684337 or Lesley Roberts 684545
Compton and District History Society	Diana Cook 684771
Comptonians	Margaret Welsh 684238
Village Hal	Mo Read 684130/07814 802814 or lcvillagehall@yahoo.co.uk
Compton Creatives	caroline.nixon@btinternet.com or jhburras@yahoo.co.uk
Long Compton & District Walkers	Stuart and Imogen Brown. 684042
Long Compton Bridge Club	Chris Galloway 684234
The Friends of Long Compton Church	Steve Lavelle steveplavelle@gmail.com



TO ALL WHICHFORD AND ASCOTT VILLAGERS

COME AND CELEBRATE

THE KING'S CORONATION

ON THE GREEN

Sunday 7th May

Bring Your Own Picnic Lunch

Table and chairs will be provided but no cover

Prizes for the best children's crown or tiara

Children must be accompanied by an adult

Tickets: Free of Charge

Pre-Booking Essential

Please contact: Sophia Corlett

sophiacorlett@btinternet.com / 684369 to book your place

Bluebell Walk Teas



If you are planning to visit the amazing bluebells in Whichford Wood at all on Monday 1 May please come and enjoy tea at our beautiful 13th century church. Tea and homemade cakes will be served at

St Michael's Church, Whichford from 2.00-5.00pm on both days. Start and end your walk at the church which will be well signposted in the village. Booking not required. Dogs very welcome if kept on a lead.

All proceeds to The Friends of St Michael's Church, Whichford.

Sophie Corlett and The Friends of St Michael's Church

The Reading Room Draw

Congratulations to Fiona Robertson who was the winner of the April Reading Room draw.

Jenny Scrivener



I am holding a pop-up plant & produce sale at home in Whichford in aid of Shipston Home Nursing.

The sale is on Saturday 13 and Sunday 14 May, selling plants, pots, garden furniture, jams, produce & cakes. I would be very grateful for donations of any plants, seedlings and home produce any time before then to me at Lenticulars, Whichford.

Diana Atkins, 01608 684025 dianaatkins4@gmail.com



Whichford & Ascott Gardens Open

Sunday 18th June 1.30 – 5.00pm

Nine gardens will open:

*The private garden of The Whichford Pottery • The Old Rectory •
Ascott Rise • Ascott Lodge • Whichford Hill House • Belmont House •*

Plum Tree Cottage • Lenticulars • Wood House

Combined entry: Adults: £7.00 and Children free.

Home-made teas in aid of St Michael's Church, plant stall, raffle – win a Whichford Pottery voucher.

Further details will be available in the June issue of The Link.

Katharine Wood

VILLAGE NEWS

THE WOLFORDS

Little Wolford littlewolford@swlink.org.uk

Editor, Great Wolford: Lynn Mathias

Email: greatwolford@swlink.org.uk Tel: 674247



THE WOLFORDS CORONATION PARTY



**Join us to celebrate the
Coronation of His Majesty The King**

Sunday 7th May 2023

From 12.30pm @ The Wolfords Village Hall

Tickets include hog roast plus salads, ice cream and entertainment

£10 per adult, £5 for 5-14 year olds and under 5s are free

Bring your own drinks!

Please email wolfordscoronationparty@gmail.com to confirm your places and arrange payment (payment in advance is required, cash or online options)

Wolfords WI

Our April meeting was a craft evening; we were set the task of decorating eggs for Easter. Apart from being great fun, it was amazing to see the variation in the eggs that were decorated. I however, learnt I would never work for Faberge!



This month's Supper Club was held at The Sun in Hook Norton, where the food, company and conversation, were all equally enjoyable.

Book club discussed *The Girl with the Louding Voice*, by Abi Dare, which went down very well and everyone found it really descriptive of life in Nigeria.

Next meeting: May 3 at 7:30pm at Wolford village hall. Hula, Hula Rula, an evening with a hoola hoop in honour of the coronation of King Charles III we will have our own coronation. Looks like it is going to be a fun evening, all round!

June's Meeting is Wednesday 7 June, our speaker will be talking and demonstrating the art of wicker work.

Book Club Tuesday 2 May 2.30pm reading: *Once Upon a River*, by Diane Setterfield. It's set around Buscot which gives it a familiar feel.

Walking club Saturday April 22 2.00pm Ebrington

If you would like to join us, your first visit to our meetings is free. Subsequent meetings, if you do not want to join or are undecided about joining the WI, are £5, which includes refreshments. If you are interested in coming along to our members' meeting or any of the other activities, or have any questions about Wolfords WI and the activities, please contact Gilly on 07812 344 598, gillyhd99@hotmail.com.

Moreton Car Boot Sale: Monday 29 May 2023 7.00am

Have you been decluttering and don't know what to do with all those unwanted items? Well Wolford PCC has a solution to your problem! The members of the PCC are giving up their May Day Bank Holiday lie in to be at Moreton Car Boot sale.

What items do we want from you? We are always surprised at what sells so anything in saleable condition including clothes, bric-a-brac, crockery, glasses, tools, soft furnishings and children's toys. No bulky items. If you're not sure give us a ring. You can deliver to us, or we can collect from you.

Tel: John Wrench 01608 674389 or Ann McKenna 01608 674009

First Class Fish and Chips- Takeaway Offer



On Saturday 20 May, you are invited to come and collect your pre-ordered fish and chips at a specified timeslot direct from the van we have always used at the hall. Regulars have said it's the best fish and chips around. The van will be parked by the crossroads in Great Wolford from 6.00pm. This will be our last takeaway before the Autumn.

We need a minimum of 50 orders to go ahead so the cutoff date for ordering is Saturday 6 May

To keep the delivery on the night quick and efficient we are asking for payment to be made in advance when we confirm your order.

Of course, you don't need to be a Wolford resident to join in – if you can come and collect then you're very welcome to place an order. £11 per serving

We will also be running our raffle with lots of prizes - tickets £1 per strip or 6 for £5.

To order please contact: Ann McKenna (email: annmckenna3@sky.com Tel: 01608 674009)

In aid of Wolford church upkeep. Please help us to maintain the church and churchyard at the centre of our village.

Coffee, Cake and Chat at Wolford Church

Tuesday 23 May 11am-Noon

Come and join us for a chat over coffee (or tea) and cake at St Michael's Church



Come and meet new friends or old

Share your interests and just chat

Everyone welcome



Hardwood Logs

seasoned for 12 months - air dried – sustainable resource

Full Load £170.00

Half load £85.00

Kindling XL bag £15.00

FREE local delivery

Stacking service from £10.00

Percy: 07788 778 000

Email: hello@wolfordwood.com

Or use the QR code to order on-line



Find out more at www.wolfordwood.com



DAVID BUTLER PLUMBING & HEATING

A family-run business for over 40 years,
specialising in:

- Oil, LPG & Gas Boilers
- Central Heating
- Heat Loss Surveys
- Thermostat Control Upgrades
- General Plumbing
- OFTEC and Gas Safe Registered

For general enquiries or to book a service:

Call: James Butler 07760977058

Email: dbutlerheating@gmail.com

litho printing
digital printing
giclée printing
pantone printing
graphic design
fine art scanning
print finishing

T 01608 737 640

E enquiries@kmslitho.co.uk

www.kmslitho.co.uk

Railway Bridge House, Station Road,
Hook Norton, Oxfordshire OX15 5LS

KMSLITHO

YOUR PRINT, OUR PASSION

SHIPSTON SPOKES

VISIT OUR SPECIALIST E-BIKE CENTRE



ALSO IN STORE

- ADULT AND JUNIOR BIKES
- WIDE RANGE OF SPARES & ACCESSORIES
- CYTECH CERTIFIED WORKSHOP
- AUTHORISED BOSCH SERVICE CENTRE

Shipston Spokes, 9 Church Street, Shipston-on-Stour, CV36 4AP

T: 01608 664588 **E:** shop@shipstonspokes.com **W:** shipstonspokes.com

OPENING HOURS: Tuesday to Saturday 10am - 4pm

Drop off & collection for repairs or servicing can be arranged out of these hours if required

Sun Rising

Natural Burial Ground
and Nature Reserve

A place of deep peace where
loved ones can be laid to rest
in growing woodland and
wildflower meadows.



01295 688488

sunrising.co.uk

near Lower Tysoe



Blocked Ears?



EAR WAX can be troublesome and cause
sudden loss of hearing, feel uncomfortable
and itchy – but it can be easily removed at
our clinic in Blockley.

The Willows

NORTH COTSWOLDS EAR HYGIENE CENTRE

Unit 47, Northwick Business Centre,
Blockley, Moreton-in-Marsh, GL56 9RF

Book Online: www.earhygienist.co.uk

Or contact Issy today: 01386 701650

issy@earhygienist.co.uk

John Napier Forestry and Timber

Trees purchased: standing, felled dead or live.

Hardwood Boards and Oak Beams available on request.

Seasoned, dry barn stored, locally-felled
firewood and kindling

07816 379836

jnapierforestry@yahoo.co.uk

website: jnapierforestry.com

Oats Health Foods



Comprehensive range of foods,
supplements, body care and
eco-household goods.

Upstairs a greeting card gallery plus
anything else that takes our fancy.

26 High Street
Chipping Norton, OX7 5AD

Tel: 01608 64 65 56

CHERINGTON LOCKSMITHS & HANDYMAN



LOCKS CHANGED
FLATPACKS ASSEMBLED
SHELVES PUT UP
PAINTING
NO JOB TOO SMALL

TO FIND OUT MORE
GIVE US A CALL
01608 685957 / 07970 321718
JOHN OR ANNE

Morgan Roofing Services

07765 228784



We are one of the leading roofing companies in Warwickshire and West Midlands. We undertake all types of traditional, domestic and commercial roofing work including: repairs and restorations, re-roofs and flat roofs, lead roofing, and built up felt roofing.

For a free quote, call **Peter Morgan on 07765 228784** or 01608 433032 or 01386 304324. Email: **morg11p@hotmail.co.uk**

We provide completely free no-obligation estimates for all jobs.

www.morganroofingservices.co.uk

Give us a detailed description of what you want done, and we'll respond quickly with a detailed, no-obligation estimate.

DANIEL KNIGHT

**SEASONED
HARDWOOD LOGS**

£110.00 A LOAD

KINDLING AVAILABLE

07815 795783

danielknight27@outlook.com



*physiotherapy clinic & pilates studio
A helping hand to get you back to health*

**Physiotherapy
Sports Massage
Pilates Classes**

Visit the website for more information
or call to speak to a member of the team

T 01608 545 608

E physio@chippingnortonphysio.com

www.chippingnortonphysio.com

HALL FOR HIRE

Burmington Village

Historic hall in a pretty location

Carpeted, heated hall

Well equipped kitchen

Tables, chairs & cloths

...all included in the price

Contact Irene Clarke 01608 656296

K.A. PERKINS

SITE
CLEARANCE

PLANT HIRE

GROUND
WORKS

Water Supplies, Drainage, Ditching

Road & Drive Construction

Tarmacing, Patios, Block Paving

DEMOLITION

Tel: 01608 686189

BUILDING

Mobile: 07702106739

R.Locke & Son
Independent Family Funeral Directors - Est. 1853

t: (01608) 685274 Caution Corner, BRAILES, OX15 5AZ



Generations of Care

For more information about our services, to view our funeral announcements and online donations, please visit



www.rlockeandson.co.uk

Golden Charter
Funeral Plans 

THE WOLFORDS VILLAGE HALL

Ideal for children's parties, meetings, classes, family gatherings, BBQs, company training

- seats 50 - 60, (80 standing)

- excellent disabled access

- well-equipped, modern kitchen

Bookings:

<https://www.thewolfordsvillagehall.org.uk>

**Fed up with the headache of
bookkeeping?
Let me handle everything for you.
Professional Bookkeeping and
Payroll Service**

Vat returns* Annual accounts* Cash flow*
Monthly figures

Bank reconciliation* Using your system or
starting from scratch

Ann McKenna MICB CB.Dip PM.Dip
Leylands Business Services

07500 678206/ 01608 674009
annmckenna3@sky.com



**Member of the Institute of
Certified Bookkeepers**

John Lyne homehardware

Stockists of a wide range of DIY, Household,
Gardening and Cookware products

Shop Local - no need to travel out of town!

Free local delivery service

1 High Street, Shipston-on-Stour.

Tel: 01608 661422

OPEN: Mon to Fri: 8am-5.30pm. Sat: 8am - 5pm

www.homehardware.co.uk

Sole Funeral Service

Bidston Close, Over Norton
Sympathetic & personal service
from a qualified funeral director
with private chapel

Memorials designed & supplied

Tel: 01608 644112

at any hour

TAXI!

CLARKES OF SHIPSTON

Licensed Private Hire
Airport Service

To book or obtain a quote call:

(01608) 661418

or email:

stuart.clarke@lineone.net

W E Sutton Ltd

Ground Works & Plant Hire

Est. 1963



Long established and experienced company

- All types of ground works
- Drainage
- Plant hire
- Council Approved contractors

7 Brook Cottages, Willington, Shipston on Stour,
Warwickshire CV36 5AU

Tel: 01608 663300 Fax: 01608 664669
Mobile: 07970 632265

Need a good
venue?

Long Compton Village Hall

Our top-rated hall facilities
include:

- Superbly equipped kitchen
- Ample parking
- Capacity for up to 100 people
- A separate room for smaller gatherings of 30 people
- Wifi available

For more information, or to
book, please contact

Ann Lattimore

07966 547335

lcvillagehall@yahoo.co.uk

Our superbly
equipped
Village Hall
can meet your
needs for a

low cost venue for your next event.



The hall gets booked quickly.
Don't delay!

Prices and availability at:

www.longcomptonpc.co.uk/

your-community/village-hall



SNJCARPENTRY AND GLAZING

WWW.SNJCARPENTRYANDGLAZING.CO.UK

SPECIALISTS IN INTERNAL AND EXTERNAL CARPENTRY AND GLAZING.

- Door hanging
- Skirting and Architrave
- Bespoke built in cupboards
- Wooden flooring
- Replacement Windows and Doors
- New Windows and Doors
- Replacement glass
- Replacement hinges, handles
or locking mechanisms



CONTACT US FOR A NO OBLIGATION QUOTE:
07851 436 136 / 01608 661352

Jonathan Perry
CHIMNEY SWEEP

Open fires, Inglenooks, Wood burners,
Agas

For a clean, friendly and professional
service please contact me on:

Tel: 07557 058051

Email: jperrychimneysweep@gmail.com



Guild of Master Chimney
Sweepers qualified



All work certificated for house
insurance purposes

Long Compton Village Stores

Main St, Long Compton.

- ✓ **Takeaway food: hot pies, fresh cut sandwiches, tea & coffee etc.**
- ✓ **Instore bakery, cakes pastries etc.**
- ✓ **Dry Cleaning**
- ✓ **Greengrocery, dairy products, confectionery**
- ✓ **Gluten free products**
- ✓ **Newsagents & Stationery**
- ✓ **Off licence**
- ✓ **Flowers**
- ✓ **Home delivery**

Tel: 01608 684277

MUSIC TUITION

Tuition in Classical Guitar
and Piano.

All ages welcome.



Dr. Julian Grimshaw

B.Mus, D.Phil (Oxon)

01451 821525

07891 423855

jdwyergrimshaw@btinternet.com

Auction Sales & Valuations

Valuation, collection and auction
service of individual items
through to complete property
and commercial clearances.

Call for a free no obligation quote or
email info@leauction.co.uk

SALE ENTRIES NOW INVITED

www.leauction.co.uk



LOCKE & ENGLAND
AUCTIONEERS & VALUERS

**01926
889100**

**18 Guy Street,
Leamington Spa,
CV32 4RT**



NOW OPEN FROM 5PM ON MONDAYS

THE RED LION

a country inn with rooms



Delicious local food

Bar open all day Friday, Saturday & Sunday

Large beer garden with children's play area

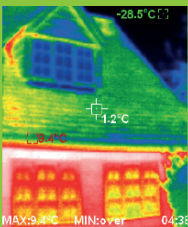
Long Compton, Nr Shipston on Stour,
Warwickshire CV36 5JS
Telephone: 01608 684221

www.redlion-longcompton.co.uk

[Twitter](#) [Facebook](#) [Instagram](#) @redlionlongcomp



Plan the energy upgrade for your home



All products shown are timber-composite windows



ENLIGHTENED WINDOWS

Truly the next generation of products

Specialist installer of alu-clad, low maintenance wooden windows

Very high performance

Expected to last over 60 years

A wooden window with no repainting

FREE thermal imaging survey of your home with every installation. See where your home leaks heat



01608 684607
enlightenedwindows.co.uk



Shipston Care for Local People

Compassionate Care for people of the Cotswolds



Shipston Care

Shipston Care is a leading home care provider based in the Cotswolds. We offer a Live-in care service that can be a great alternative to leaving the familiar surroundings of your own home.

Our success is built around the quality of our carers and support staff who will carry out a **free, no obligation needs assessment** to establish what your individual needs are.

Whether you require personal care, assistance with daily activities, or would just like some companionship, we are dedicated to delivering the highest possible standards of live in care to enable you to continue living in your own home.

For an informal chat, please give our friendly team a call on 01608 663377



"I knew, through my work as a nurse at a local Hospital, of your good reputation and responsiveness before you started caring for my mum. However, it was only when she needed your help that I realised quite how good you are. It's been quite reassuring knowing that mum had been safe at home with your carers. I know that she is also grateful for the stability this has provided. Without your support, my mum wouldn't have been able to stay in her home for so long - and the way you have been able to increase care rapidly when she needed it helped with this." Philip Vial.

We have built our reputation on:

- Carefully matching the carer to you, our client
- Our support for daily activities
- Empathetic Personal Care
- Respectful Companionship Care
- Safe Medication Handling
- Excellent Meal Preparation

You will benefit from:

- Industry best yet affordable care
- The services of one carer who is carefully selected to best suit you, your needs, and your lifestyle
- Catering for your requirements and ongoing needs
- A personalised service

enquiries@shipstoncare.co.uk | 4 Granville Ct, Shipston-on-Stour, CV36 4PP | 01608 66 33 77

Shipston Care Limited is fully regulated by the Care Quality Commission

Nursery Days at Whichford Pottery

A great chance to buy quality plants and chat to these top nurseries.

• Special Offers on Flowerpots • Courtyard Garden • The Straw Kitchen

Saturday 13th May 10am to 4pm

Phoenix Perennial Plants

Renowned nurserywoman Marina Christopher will be selling a wide range of her unusual perennials. Marina has a fantastic reputation for her interesting plant choices and her focus on plant species that are beneficial to insects and wildlife.



Saturday 20th May 10am to 4pm

Hoo House Nursery

Established over 30 years ago, Hoo House Nursery will be selling a wonderful selection of their perennials, alpines, ferns and grasses, all grown peat-free. The nursery now offer over 900 different varieties of plants!



Fibrex Nurseries

Fabulous Fibrex are specialist growers of pelargoniums, growing over 2000 varieties.



Saturday 27th May 10am to 4pm

Old Court Nurseries

Specialist growers of Michaelmas daisies since 1906, Old Court Nursery is now home to the National Plant Collection of autumn flowering asters and related species. They will be selling a selection of their plants including Michaelmas daisies and tender succulents.



Saturday 3rd June 10am to 4pm

Hardy's Cottage Garden Plants

Founded in 1988 by Rosy Hardy, Hardy's Cottage Garden Plants is now one of the UK's leading nurseries for seasonal herbaceous perennials. Hardy's are winners of 24 RHS Chelsea Gold Medals and recognised by the RHS as a Master Grower.



Kitchen Garden Plant Centre

Winner of four RHS Gold Medals in 2022, the Kitchen Garden Plant Centre will be selling a great selection of aromatic herbs and edible plants, all grown in their Gloucestershire family nursery.



Whichford Pottery, Whichford, Nr. Shipston-on-Stour,
Warks, CV36 5PG Tel: 01608 684416 www.whichfordpottery.com