

THE LINK

A COMMUNITY MAGAZINE FOR THE
SEVEN PARISHES IN THE SOUTH
WARWICKSHIRE 7 BENEFICE

OCTOBER 2025

£1.20



■ BARCHESTON with WILLINGTON ■ BARTON-ON-THE-HEATH
■ BURMINGTON ■ CHERINGTON with STOURTON ■ LONG COMPTON
■ WHICHFORD and ASCOTT ■ THE WOLFORDS

EVENTS DIARY

Contact the Editor:

editorswlink@gmail.com

October Events Update (VH = Village Hall; Ch = Church)

Weds 1	Community Coffee	Long Compton Ch	10:30
Thurs 2	Country Market	WI Hall Moreton	10:00
Fri 3	Feel Good Friday	The Hall, Stourton	14:00
Sat 4	Quiz Night	Long Compton VH	19:00
Sun 5	Harvest Service	Wolford Ch	11:30
Tues 7	Barch/Will PC Meeting	Burmington VH	19:45
Weds 8	Historical Society	Long Compton VH	19:30
Thurs 9	Country Market	WI Hall, Moreton	10:00
Sat 11	Social Saturday	Long Compton VH	11:00
	Bingo/Fish and Chips	Wolford VH	19:00
Sun 12	Harvest Service	Whichford Ch	10:30
	Charity Pub Quiz	Red Lion, Long Compton	19:30
Tues 14	Coffee Morning	Wolford Ch	11:00
	Cameo Club Lunch	Burmington VH	12:00
Weds 15	Comptonians	Long Compton VH	12:30
	Feldon Mil and Naval Soc	The Hall, Stourton	20:00
Thurs 16	Country Market	WI Hall, Moreton	10:00
Fri 17	Feel Good Friday	The Hall, Stourton	14:00
	Movie Night	Brailes Picture House	19:15
Sat 18	Volunteer Day	Wolford VH	10:00
	Coffee Shop	The Hall, Stourton	10:30
Sun 19	Harvest Service	Cherington Ch	10:30
Weds 22	Garden Club	Long Compton VH	19:10
Thurs 23	Country Market	WI Hall Moreton	10:00
Fri 24	Carers4Carers	Kineton VH	10:30
Thurs 30	Country Market	WI Hall, Moreton	10:00
Fri 31	Feel Good Friday	The Hall, Stourton	14:00

The LINK TEAM

Editor	Sara Billins	editorswlink@gmail.com
Treasurer	Martin McKenna	treasurer@swlink.org.uk
Advertising Manager	Cathryn Aitken	advertsw@swlink.org.uk
Company Secretary	Martin McKenna	secretary@swlink.org.uk
Subscriptions Manager	David Cleave	subs.swlink@outlook.com
Online Manager	Simon Paton	online@swlink.org.uk

Village Editors

Barcheston & Willington	Vacancy	barcheston@swlink.org.uk
Barton-on-the-Heath	Cathryn Aitken	barton@swlink.org.uk
Burmington	Graham French	burmington@swlink.org.uk
Cherington & Stourton	Christine Dudfield	cherington@swlink.org.uk
Long Compton	Sara Billins	longcompton@swlink.org.uk
Whichford & Ascott	Melanie Arnold	whichford@swlink.org.uk
Great Wolford	Lynn Mathias	greatwolford@swlink.org.uk
Little Wolford		littlewolford@swlink.org.uk

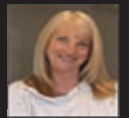
Feature Editors

Church News	Liz Clarke	officesw7@gmail.com
Gardening Notes	Margaret Welsh, Miranda Arnold	editor@swlink.org.uk
Farming Notes	John Richardson	farming@swlink.org.uk
Nature Notes	David Sewell	david@thegardenmakers.co.uk

Village Distributors

Barcheston & Willington	Maki Sutton	661539
Barton-on-the-Heath	Cathryn Aitken	07929 639871
Burmington	Julia Anne Sykes	07497 088 882
Cherington & Stourton	Ebe McLeod	686278
Long Compton	Anne Molloy	07703 261026
Whichford & Ascott	Iona Grieve	07754 543664
Great Wolford	Sue Rew	674380
Little Wolford	Emily Majzub	07718955990

EDITORIAL



Welcome to the Halloween edition of The Link. October, the month the clocks go back and an overwhelming urge to eat stodge and drink hot chocolate comes over us. Never mind, we can work it off sweeping up all the leaves!

Despite the chill in the air, there is much to enjoy at this time of year and a trip to Batsford Arboretum for a wander through the Autumn trees is always high on my agenda; then, back home for a hot drink and a flick through the pages of The Link to see what's going on locally. I am especially looking forward to the start of the charity quiz season at the Red Lion. As always, these pages are full of dates for your diary and things are certainly starting to get busy in the run up to Christmas.

Last month, we had our Link AGM, and I am pleased to report that because of the increase in subscriptions and growing popularity of The Link we have been able to donate £500 to each of the churches in our villages which will help towards the never-ending cost of upkeep and maintenance. This is great news so if you know anyone who still isn't a subscriber do let them know that they are missing out!

Thank you for your support and happy reading.

Sara Billins



Cover photograph: Charlie the Halloween Cat by Sara Billins

LINK cover and artwork produced by Kopyrite, Chipping Norton

The LINK welcomes contributions for the front cover or elsewhere. Portrait orientation and good quality photographs or artwork preferred. Please send items to editor@swlink.org.uk

THE LINK is published by South Warwickshire LINK Ltd, a not-for-profit company limited by guarantee (reg. no. 07234681), and printed by Kopyrite.net, Chipping Norton.

The opinions expressed in The LINK are not necessarily those of the Editor or any member of the LINK team. Whilst every effort is made to ensure accuracy of information printed, the Editor/team do not accept any responsibility for the consequences of any errors that may occur.

The LINK does not endorse any products, services, or companies. The appearance of advertisements in this magazine is not a guarantee of those products/services or the companies that manufacture, distribute, or promote such products/services.

All information held by The LINK is strictly confidential and is held purely for administration purposes and not sold or offered to third parties.

All subscription monies paid to The LINK are non-refundable in the event that the South Warwickshire LINK Ltd. ceases to operate.




THE RED LION

CHARITY PUB QUIZ SEASON 2025-26

Starts

Sunday 12th October

What you need to know...

- Quiz starts at 7.30 (ish)
- Teams of up to 6 people (£2 per person entry fee)
- Each quiz supports a different charity - follow us on social media to be the first to know the charities we'll supporting this season
- Book a table to guarantee seats for your team
- There is a raffle with great prizes at each quiz




[@redlionlongcomp](https://www.instagram.com/redlionlongcomp)

Quiz dates for your diary

SUNDAY 12TH OCTOBER | SUNDAY 26TH OCTOBER

SUNDAY 9TH NOVEMBER | SUNDAY 23RD NOVEMBER

SUNDAY 7TH DECEMBER


SUNDAY 21ST DECEMBER - CHRISTMAS QUIZ

SUNDAY 4TH JANUARY - QUIZ OF THE YEAR


SUNDAY 18TH JANUARY | SUNDAY 1ST FEBRUARY

SUNDAY 15TH FEBRUARY

SUNDAY 1ST MARCH - LAST QUIZ OF THE SEASON



Happy Birthday!



October 2025

Walter Johnston	Great Wolford	14
Gilbert Johnston	Great Wolford	14

**Please note the copy deadline for November 2025:
October 9th**



WHAT'S ON at THE HALL

Sunday 2nd November: Cantamus A Capella Choir "Shades of Autumn"

A concert of moving and uplifting music complemented by readings to match the mood. Starts 3pm. Tickets £15, includes tea & cake! From: www.cantamus.org.uk

Saturday 22nd November: The Hall Theatre - "Dead On Cue" - 7:30pm

Professional Live Theatre continues at The Hall with this fantastic play - perfect for a dark Winter's night.....A new ghostly thriller, written and performed by Mark Carey Set in the same theatre dressing room, during the same play, at the same theatre, but 60 years apart. What is the unearthly link between the two productions of Hamlet? Doors & Bar 6:30pm. Performance Starts 7:30pm. Tickets £15 Contact: info@thehallevnts.org.uk / <https://buytickets.at/gilesshentonproductions>

Saturday 29th November: Christmas Family Prize Bingo Night - 7:30pm

The Stour Health & Wellbeing Partnership bring you another fun evening of Bingo with some great prizes on offer! Doors & Bar 7pm, Eyes Down 7:30pm

Thursday 15th January: The Hall Theatre - "Mettle" - 7:30pm

November 1942, 18-year old Gordon Collett volunteers for the Royal Navy serving on the HMS Vanessa - devastating U-boat attacks result in the heaviest loss of ships from any trans-Atlantic convoy that winter. This gripping, moving and often humorous new show is written and performed by Nicholas Collet, Actor, Writer - and Gordon's son. Doors & Bar 6:30pm. Performance 7:30pm. Tickets £15 - info@thehallevnts.org.uk

Sunday 15th March : The Hall Theatre - "Victor and Albert - Purveyors of fine musical comedy" - 7:30pm

Professor Victor and Dr Albert's unique brand of entertainment is a thrilling blend of music, comedy, games and a dash of magic, offering a fresh twist on a classic two-man variety show! Doors & Bar 6:30pm. Performance Starts 7:30pm. Tickets £15 Contact: info@thehallevnts.org.uk / <https://buytickets.at/gilesshentonproductions>

Sunday 10th May: The Hall Theatre - "Wood Owl & The Box of Wonders"

Ideal for children of all ages, featuring beautiful handmade puppets, original songs and music. Performance at 2pm, contact: info@thehallevnts.org.uk



**The Hall Cherington, Stourton
& Sutton-under-Brailles**

www.thehallevnts.org.uk / info@thehallevnts.org.uk





Carers4Carers - your local support group for family carers.

We meet on the fourth Friday of the month from 10:30 to 12 noon at Kineton Village Hall. Enjoy refreshments, friendly chat, and mutual support. Loved ones are welcome too – they can join our Companionship Group during the meeting.

Friday 24th October: Therapist Anita returns with her popular hand massages, and the Kineton Manor team will lead optional small group discussions on advance care planning in a gentle, supportive environment. If you would like to take part in a group, it would be helpful to let us know in advance.

For further details or help with transport arrangements please contact Gillian on 07947 893504/ email kcarers4carers@gmail.com, or explore our website www.carers4carersonthefosse.org.uk

Lisa Barnett – Assistant Coordinator

**Even the word "dementia" can be daunting...
but we believe it's better to get the practical advice
and emotional support you need as a family carer**

Please visit one of our dementia friendly cafes locally

Tuesday from 10.30am - 12.30pm



Shipston on Stour CV36 4QG

Wednesday from 2pm - 4pm



Wellesbourne Village Hall CV35 9NH

Thursday from 10.30am - 12.30pm



Moreton-in-Marsh GL56 0DS

Friday from 10am - 12 noon



Tysoe Village Hall CV35 0SE

1st Tuesday of each month
from 10.30am - 12.30pm

Compton Verney House CV35 9HZ
(contact us for entrance tickets)



talkdementia.uk

Advice and support for carers of loved ones
living with dementia in South Warwickshire

Contact Paul and Heather Dowler

Phone 01295 688376

Email talkdementia.uk@gmail.com



Shipston Link runs scheduled local bus services, Tuesday to Saturday, from surrounding villages into Shipston Town Square, via the Medical Centre, plus weekly shopping trips to Banbury, Moreton-in-Marsh, Chipping Norton and Stratford-upon-Avon.



Our friendly drivers can take you right to your destination; so relax and let us worry about the parking. Bus Passes are accepted on all our Services, with flat-fares for cash customers.

We also provide a very reasonably priced Private Hire service, seven days a week, using our comfortable 16-seater mini-buses.

For more information about our scheduled Services call the Travel Line on 0871 200 2233, or click www.shipstonlink.co.uk



SHIPSTON-ON-STOUR PROBUS CLUB

COMPANIONSHIP FOR RETIRED AND SEMI-RETIRED GENTLEMEN OF SHIPSTON AND THE VILLAGES



FRIENDSHIP | FUN | FASCINATING TALKS

MEETING FORTNIGHTLY ON FRIDAY MORNINGS
AT SHIPSTON SPORTS & SOCIAL CLUB
21 LONDON ROAD, SHIPSTON-ON-STOUR CV36 4EP

ALL WELCOME!



The LINK is your local monthly Community Magazine.

It has a circulation of 700 across the South Warwickshire Seven Benefice covering the villages of Barcheston, Barton, Burmington, Cherington, Long Compton, Whichford and The Wolfords.

We're always pleased to welcome new subscribers. At just £12.00 for a calendar year subscription, this represents excellent value and is a great way to stay connected with the news of events and stories in your local community.

We're keen to expand our circulation, so sign up and we'll add you to our readership and deliver to your door each month. Just contact our Subscriptions Manager David Cleave subs@outlook.com



Moreton-in-Marsh Country Market

For everything homemade, home grown, home cooked and home crafted.
Every Thursday, 10.00 am to 12.00 pm, WI Hall, New Road, Moreton in Marsh.

All of the food we sell is cooked in the home, not processed in a factory, using locally sourced, seasonal produce and you can speak directly to the producers. We also have some wonderful crafters with unique, creative products.

Have you thought about getting involved with the market? We are always in need of new producers and volunteers to help with selling our lovely produce. Contact details below:

07933 141410 / mimcountrymarket@gmail.com or find us on Facebook

A big thank you to all our customers for your continued support.



Shipston-on-Stour Area u3a A Friendly and Stimulating Local Community

Are you no longer working full time and wanting to do something new?

Join us at u3a on a fulfilling journey of learning, friendship, and fun, where individuals come together to explore new interests and share experiences.

We offer many different activities including **arts, nature, history, physical activities, music, languages, and social events**. Our welcoming community of over 350 members from all over the Shipston on Stour area encourages you to pursue lifelong learning and discover new hobbies while enjoying the company of like-minded people.

Why Join U3A?

Learn Something New: Explore and join any of our 39 interest groups.

Make Friends: Connect with others who share your interests and experiences. Rediscover the joy of learning.

Stay Active: Join our regular outings, workshops, walks and social events.

Flexible Participation: Choose the activities that suit your schedule and interests.

For more information and a full list of activities, please look at our website www.sosa.u3asite.uk
Come along to one of our monthly meetings which start at 2pm normally on the 4th Tuesday of every month at the Townsend Hall, Shipston, or contact Secretary, John Keayes, by e-mail secretary@sosau3acommittee.org to find out more



A Cappella Choir



Cantamus

A CONCERT OF
MOVING AND
UPLIFTING MUSIC,
COMPLEMENTED
BY READINGS TO
MATCH THE
MOOD

SHADES



OF

AUTUMN



SUNDAY
2ND NOVEMBER 2025, AT 3 PM

THE HALL, STOURTON
CV36 5HG

TICKETS £15.00
INCLUDES TEA & CAKE



For more Information &
Tickets Scan QR Code



cantamus.org.uk



Cantamus to perform at The Hall

As a change to its usual venues in and around Shipston on Stour, the accomplished a cappella choir Cantamus will be performing at The Hall in Stourton in November. This recently built venue in a beautiful rural setting offers excellent performance space and facilities for the concert, with comfy seating and eco heating.

Cantamus will present "*Shades of Autumn*", a programme of seasonal songs and readings. By turns reflective and amusing, the concert conveys all the wistfulness and joy of the changing moods of summer and autumn.

The programme will be a well-considered mix of pieces to suit the occasion, with some beautiful sacred music by Lauridsen, Bairstow, and Daley interspersed with pieces by Elgar, Brahms and Rheinberger. Richard Emms's arrangements of songs by the likes of Cole Porter, Jerome Kern, Sting and Lennon and McCartney will also feature. There will even be some barbershop quartet singing. Readings by Anne Hume in her inimitable style, some very poignant, some humorous.

The big draw of course will be homemade cakes in the interval. Many of the choir members are excellent cooks when they aren't singing.

The concert takes place on Sunday 2 November at 3:00 pm at The Hall, Stourton CV36 5HG.

Tickets are available via the website or at the door and cost £15.00 to include tea and cake. www.cantamus.org.uk



Could this be the new Shipston 'Garden City'?

What started with a developer flying a kite for a site including the flood plain is now becoming a very worrying threat to Shipston, Barcheston, Honington and the surrounding villages. An initial proposal for 1150 houses between Barcheston and Honington could become a much greater development. We have all seen what happened at Wellesbourne and Bicester.

Housing Need

Shipston have already built well in excess of their required new housing quota. There is minimal housing need in the town and Shipston Council will almost certainly be objecting to this new proposal. The only reason this development is being put forward is to profit the developers and the landowners who expect to sell houses easily in our unspoilt part of Warwickshire. Local residents will be blighted by site traffic and a population explosion. It will put an intolerable strain on nursey and senior schools, medical facilities, roads and amenities. Four further sites on the west side of Shipston have already put in for planning with another site pending. If granted. that will add 476 more houses.

Access

The main Southern access to the site will be on Brailes Road just East of the corner of the turning to Barcheston. This is a dangerous corner at the best of times. Planned traffic management at the bridge means traffic lights with traffic backing up and jamming the one-way system. As the site residents are likely to be driving rather than walking then there will be intolerable strain on the capacity of the bridge, one-way system and parking. A northern exit from the site will come out on the Tredington Road via further new traffic lights.

Sewage

Severn Trent advise that the Fell Mill plant is already at capacity with no room for expansion. A huge investment would be needed and Seven Trent have recommended that this proposed new site does not go ahead. The new developments up the Campden Road are already experiencing trouble due to piggybacking on the old Shipston sewage network.

Action Required

This article is to update you on the plans. When objections and resistance to these proposals are required, you will be notified via The Link and social media. However, to get in touch now or register your concerns contact:

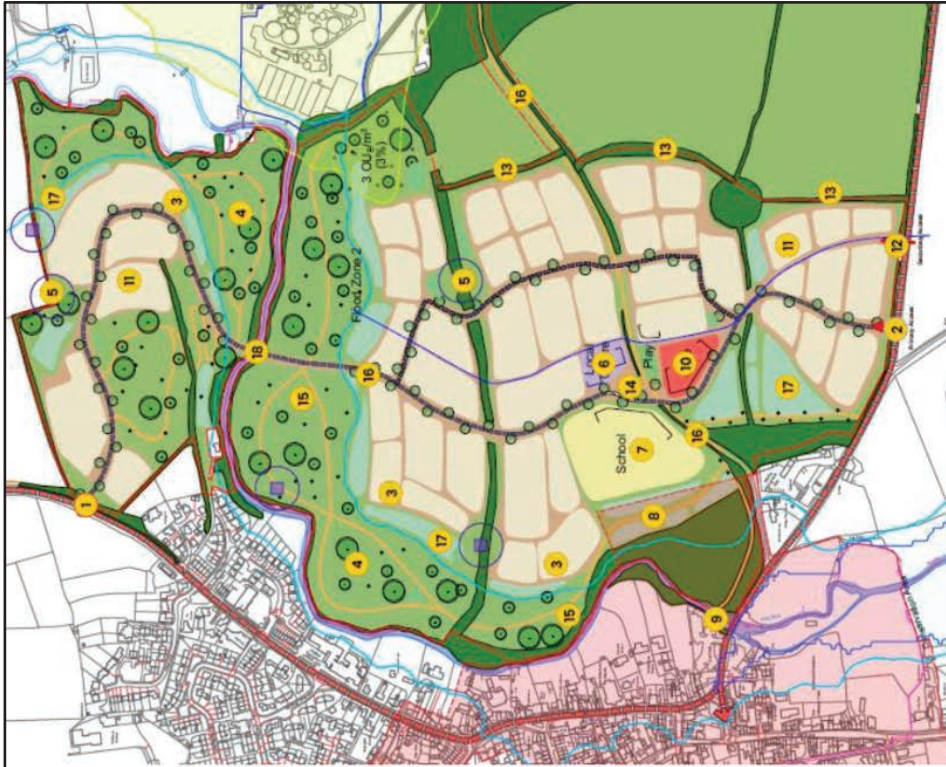
Facebook: "Say no to additional 3000+ houses" /Instagram: "@save our Shipston"

David Cleave

Proposed Framework Masterplan

Key ↓

- 1 Northern access via lighted junction
- 2 Southern access via junction
- 3 Strong views from development parcels to riverside park
- 4 Linear riverside park, play, seating, education and Active Travel
- 5 Ecological buffer
- 6 Village centre at core of scheme
- 7 2 form entry Primary School
- 8 Development screened from conservation area
- 9 New pedestrian and cycle footbridge
- 10 Care area (opportunity for c80 bedrooms)
- 11 Development blocks respond to topography and hedgerows
- 12 Secondary and emergency access
- 13 Hedgerow strengthened to create buffer to agricultural fields
- 14 New public square
- 15 Play incorporated throughout, LEAP
- 16 Greenway incorporates and protects Shakespeare Way
- 18 Primary route
- 17 Attenuation areas
- 18 New vehicle and/or pedestrian, cycle bridge over the river





52 Sheep Street, Shipston-on-Stour, Warwickshire. CV36 4AE

Charity No. 522997

Townsend Hall, Shipston, presents...
On Friday, 14th November 2025

Aret Komlosy

Accompanied by Hugh Turner on guitar; Curtis Ruiz on bass; and Steve Wyndam on drums

Performing great American songbook classics and some contemporary music from the likes of Amy Whitehouse...

Doors / Bar Open 19:00 for 20:00
Tickets £15 in advance; £17 on the Door
From the Flower House, 3 Market Place,
Shipston and online via
ticketsource.co.uk/townsend-hall or
townsendhall.co.uk

Tickets are for general admission. For a table reservation of 4 or more people, phone Peter on 07711-562317

INFO LINK

editor@swlink.gmail.com

The Post Office van is in the car park by the village shop in Long Compton from 9.30 -11.30 am Monday and Wednesday, and from 12.30 to 2.00 pm Tuesday and Thursday.

Shipston 'tip' is open - to book <https://www.warwickshire.gov.uk/recyclingshipston>.

Local Catholic Church Services

Chipping Norton

Holy Trinity, London Road. Saturday Vigil 6.00 pm. Sunday 11.00 am Tel: 01608 642703

Stow-on-the-Wold

Our Lady and St. Kenelm, 5 Back Walls. Saturday Vigil 6.00 pm. Sunday 9.15 am Tel: 01608 674354

Shipston and Brailes

Shipston, Our Lady and St. Michael, Darlingscote Road. Sunday 9.15 am.

Brailes, SS Peter and Paul, Friars Lane. Saturday Vigil 5.00 pm (for Shipston and Brailes Tel: 01608 685259)

Chipping Campden

St Catharine's Lower High St. Sunday masses: – Saturday Vigil 6.00 pm. Sunday 10.30 am Tel: 01386 84026

Local Quaker Meetings

Local Quaker Meetings for worship:

Broad Campden, Quaker Meeting House, GL556US - Sundays at 10.30 am.

Ettington, Quaker Meeting Hse, Old Halford Rd, CV377TH -Sundays at 11.00 am.

Sibford, Quaker Meeting House, Sibford Gower, OX155RX - Sundays at 10.30 am.

Shipston on Stour, in St Edmund's Church - last Thursdays (not Dec) at 2.30 pm

Local Congregational Services

Services at the Ebenezer Chapel, Long Compton as advertised

Chair Elizabeth Gilkes 07791 621778 Sec/Treasurer Sally Franklin

PARISH PEOPLE

Parochial Church Councils (PCCs)

	<i>Barcheston St Martin</i>	<i>Barton-on-the-Heath St Lawrence</i>
Churchwardens	David Hodges 07767840857	Walter Sawyer 684755
Secretary	Alice and Tom Murray 238755	Penny Mead 674595
Treasurer	David Cleave 666002	Kay Sonneborn
	<i>Burmington St Barnabas & St Nicholas</i>	<i>Cherington St John the Baptist</i>
Churchwardens	Michael Macdonald 662483	Roger Maycock 686404
Secretary	Graham French 239032	Paul Levitch 686353
Treasurer	John Boulter and Mary Scott (joint treasurer) 07968 450331	Sherry Gasson-Barker 686420
	<i>Long Compton St Peter and St Paul</i>	<i>Whichford St Michael</i>
Churchwardens	Jill Kirby 684923	Sophia Corlett 684369
Secretary	Zoë Wrigley 650404	Mandy James 684479
Treasurer	John Nye 684363	Jenny Scrivener
	<i>Wolford St Michael and All Angels</i>	
Churchwarden	John Wrench 674389	
Treasurer	Ann McKenna 674009	

Parish Council

Parish	Chair	Clerk
Barcheston	David Sutton	Lindsey Walker (663567)
Barton-on-the-Heath	James Coker (674601)	Julia Hicks
Burmington	Robert Hutchings (661496)	
Cherington	Philip Townsend (686529)	Sara Cole (686250)
Long Compton	Simon Bing (684827)	Sam Weller (684897)
Whichford	Ed Law	Nicky Aldenton
The Wolfords	Pippa Lines (01608 674035)	Elizabeth Gilkes (684336)

CHURCH NOTES

Elaine Hobday

As many Link readers will already know, Elaine Hobday died on 25th August. Elaine lived in Long Compton for 35 years and for many of those years served as a Lay Reader on the SW7 Benefice Ministry team. A tribute to Elaine will appear in the November Link. Her memorial service will be held in Long Compton church on Saturday 1st November at 11:00am, followed by lunch in the village hall. All are welcome to attend and commemorate Elaine's life and her contribution to this community.

A tribute page can be found at <https://hobdayelaine.muchloved.com>

Jill Kirby



CONNECT

Would you like to meet with other families in your community for an afternoon of friendship, fun, games and crafts and an opportunity to meet some of your local church family in a relaxed setting,

Come to Long Compton Village Hall
Every Second Sunday of the month 3-4pm

Refreshments provided

**Connect is being organised by the
South Warwickshire 7 group of churches.**

For more details, please contact
Kim Petty, kimpetty@btinternet.com 07949949215

South Warwickshire Seven Churches

Giggle Tots

Long Compton Village Hall

Free on Thursday mornings

Term time only 10.00-11.30

**Come and join us for fun,
friendship and playtime.**

**For all care givers with
children 0-4.**

More information from

Kim Petty 07949949215



Serving our Communities

SW7 Men's Breakfast

Mike Hill

Wolford Village Hall

Saturday 22nd Nov 2025

7.45am

Full English Breakfast

Book Now £10.00

rmaycock287@btinternet.com


Tele : 01608 686404

tamjackson52@hotmail.com

Tele : 077990574775

epfield98@gmail.com

Tele : 07976700763



Certainty
in a
Changing World

SOUTH WARWICKSHIRE CHURCHES – SW 7 – Seven Parishes ~ One Church

October 2025 CHURCH SERVICES							
SW 7 Sunday Worship	St Martin Barcheston	St Lawrence Barton	St Barnabas & St Nicholas Burnington	St John the Baptist Cherington	St Peter & St Paul Long Compton	St Michael Whichford	St Michael & All Angels Wolford
5 th October 16 th after Trinity	6:00pm BCP Harvest Evensong (BD)				9:00am BCP Holy Communion (BD) 4:00pm GAP Service (BD)		11:30am CW Harvest Thanksgiving (BD)
12 th October 17 th after Trinity			9am BCP Holy Communion (BD)		3:00pm Connect Village Hall (BD/KP)	10:30am CW Harvest Thanksgiving (BD)	
19 th October 18 th after Trinity		9:00am BCP Holy Communion (BD)		10:30am CW Harvest Thanksgiving (BD)	4:00pm GAP Service (BD)		
26 th October Bible Sunday					10:30am CW Holy Communion (BD)	9:00am BCP Holy Communion (BD)	

South Warwickshire Benefice

Reverend Ben Dyson Tel: 01608 628229 email: vicarsw7@gmail.com (off duty Friday)
 Benefice Administrator: Liz Clarke Tel: 07425868855 email: officessw7@gmail.com
www.southwarwickshirechurches.co.uk facebook.com/sw7churches

BD = Ben Dyson; LM = Liz Maycock; AW = Anthony Wells; CLW = Claire Wells; HP = Heather Parony; AD = Andrew Dow; RS = Richard Smith; FB = Richard Stevens; ABDB = Archdeacon Barry Dugmore
 BCP = Prayer Book; CW = Common Worship; GAP = Informal Service

It's the 2nd of September and in the last few days the long hot and often very dry summer seems to have finally passed.

I hope now we have a decent back end and not a deluge of rain to make up the shortfall I've just looked round two fields we decided to plant with a legume mix. It's the last of our SFI mid-tier schemes as no new agreements have been put forward by the Government yet. The two fields in question could have been planted in the spring and destroyed by August 2026. If we sowed it in the spring we would be paid, but I think the crop would be as good as useless for me or the environment. The clover would only flower once and make little, if any nitrogen to go into the soil. It wouldn't root very well either, helping soil structure. So, we planted it this autumn to give it and me every chance of enriching the soil and producing pollen and nectar for the bugs and bees. I'm pleased to see the first seedlings emerging this morning.

The last two years, Dan has direct drilled the seed into a stubble. This has worked well, but it left a rough finish and a rough ride when topping it. This time we gave it a light discing, followed by a quick power-harrowing to give a level seed bed to sow into.

The mixture needs two more non-legumes, so these will be direct drilled into the clover in the spring. On reading several articles lately, there seems to be widespread assumption that farmers are to blame for the decline of just about everything. In our case and many others, I know stick to the SFI agreements, cut hedges every other year, also cutting one side one year or top another. We have one and a half miles of Nethercote brook running through the farm. This is never cut and there are 6–8-meter uncropped margins the whole length, plus 29 weeping dams to help with flooding problems in Shipston on Stour. I'm 76 now and never in my lifetime of farming is so much done to help nature, or the climate. Are we an easy target? Ten days ago, we had friends call in from New South Wales, Australia; I couldn't believe the chemicals they are still using, all of which were banned here many years ago.

People need to know farmers have to make a profit to exist, and it is getting close to just breakeven point in arable farming. A £50.00 tax has been imposed on nitrogen fertiliser and limits when it can be used, in some cases. Not taking in climate changes that we are facing, sometimes many like me think 'is it ever worth the hassle?'. At present time there is plenty of food to import worldwide. Biting the hand that literally feeds you is very shortsighted.

A few days ago, I had a very pleasant afternoon at the Whichford and Ascott Flower Show. While looking around the vintage tractors I met up with John Peebles from Willington, another farmer somewhat older and wiser and fitter than me. He reads my notes, and I met a few more avid readers while there. I remember John's father, Arthur. Many years ago, standing by a cattle ring in Banbury market, he mentioned 'belt tightening' and showed me his belt that had no more holes left in it. Still, getting back to farming, the early harvest has given Dan time to start getting ground ready for the next crop. The soil albeit dry at the moment, seemed to work well. Dan has cut up most of what is to be drilled this autumn with a set of heavy discs. This saves us a bit of fuel and if all goes to plan, it can be drilled with our direct drill, combi drill or tined drill. He has ploughed the field we plan for winter beans and in due course will plough the stubble fields left to overwinter ready for spring barley and oats. I've written before that you need to plan if it works, or if not, you work round it. Mind you, that's often easier said than done.

John 'Tufty' Richardson



Photograph: Johnathan Watts

GARDENING NOTES

Editors: Margaret Welsh
and Miranda Arnold

In October, the days can be warm with a hazy sun but equally there could be the odd frost so have fleece at the ready for vulnerable plants. Late flowering plants like asters, rudbeckia and dahlias add colour to the garden and help to sustain the bees but many herbaceous plants will now have set seeds. I like to leave the attractive poppy heads, silver honesty fronds and star - like allium as well as teasels and sunflowers. The latter two help to feed the birds over the winter. In general, don't "tidy up" the garden for winter too early.

Now is the time to collect seed of plants which you want to propagate. Try to collect on a dry day, by shaking the seed heads into a paper bag. If they are damp, however, they can be left to dry by spreading out indoors before storage. The benefit of collecting seed from your garden is that not only does it save you money, but the chances are that the plants that develop will be adapted to conditions in your area. With propagation in mind, hardwood cuttings can be taken of roses or other shrubs as well as gooseberries and currants. Prepare 15cm-30cm sections by cutting above a bud at the top and below a bud at the bottom. Insert them into soil leaving about a quarter visible.

This is a good month for planting out trees and shrubs as well as herbaceous plants. The soil is still warm but should now be moist after the recent rain and they should establish well provided they are watered regularly. Evergreen shrubs can also be moved after retaining as big a root ball as possible. Bare root hedging, trees and roses should now be available for planting. This is usually a cheaper option than pot grown plants.

Grass cutting will be less necessary now as growth slows down. Autumn feed can be applied to help the grass recover from the long, dry summer. It should ideally be applied after rain and well-watered in. Any bare patches can be seeded after raking the soil, treading to consolidate it and then raking to give a fine crumb structure.

Tree leaves should be raked off the lawn regularly and composted or used to make leaf mould in a wire cage or a large plastic bag pierced to give aeration. Leaves should also be removed from beds with small plants as they smother the plants, absorb water and may cause the crowns of the plants to rot. Alpines are particularly vulnerable. Leaves under hedges or shrubs can be left for hibernating insects like ladybirds, spiders and amphibians. Hedgehogs also hibernate under large clumps of dry leaves.



Photograph: Steve Lavelle

As the days get colder, tender plants like non hardy fuchsias, aeoniums and pelargoniums should be taken into a frost-free area. Plants in pots are especially vulnerable to cold temperatures as frost can penetrate to the roots from all sides. Clumping them in groups and moving them closer to the house or against a wall or fence will help to give shelter and reduce the amount of rain entering them. Raising the pots on "feet" will help with drainage.

In the vegetable garden, as crops finish, tidy and remove stems to the compost heap and take down canes, wigwams etc to preserve the material and to lessen the chance of fungal disease. There are also fewer places for slugs to hide. Tidy up strawberries by removing discoloured leaves and any remaining runners.

There is still time to plant onion and garlic sets and also spring cabbage. The latter needs to be netted to protect it from pigeons. You could sow a pot of basil seeds and plant up some mint and parsley indoors to provide leaves for cooking over the winter.

Margaret Welsh

Bourton House visit 13th August

The Gardening Club were welcomed for another wonderful visit to this interesting garden. We were shown the entrance through the wall and were immediately met by an impressive, raised trough of grasses, Aeonium succulents and other delights. As we progressed there were potted surprises everywhere, big and little plants which kept the interest going. The paths were designed to draw one into several different borders, a white collection of roses, hydrangeas and other structural elements.

Up onto the main lawns which were surrounded by herbaceous borders, principally a "hot" border of vivid reds, round the corner and down into a sunken vegetable garden we were confronted by an engineering feature of a wigwam of bamboo with hanging strings from which hung tomato vines.

Anyone who has not been to this lovely garden, join the Long Compton Gardening Club, we shall no doubt revisit this fascinating place which could interest one all day, fortified by delicious cakes and coffee in a walled field surrounded by espaliered fruit trees.



Paul Field

Long Compton & District Garden Club

Autumn and Winter Talks and Events

As the days shorten the Garden Club moves from Summer Outings to monthly meetings in the Village Hall.

All meetings are on the 4th Wednesday of the month.

We meet for a hot drink and conversation from **7.10pm**. Our talks begin at **7.30pm**.

We have put together an interesting winter programme with speakers' talking about a wide range of garden related subjects. It is an opportunity for us all to forget about the dark and cold outside for a while and allow ourselves to be drawn in to the speaker's passion for plants, gardens and gardening.

We are a friendly group and we are always delighted to welcome new members. Come and join us, we hope there is something for everyone whatever your level of experience and interest. It is also an opportunity to share our gardening knowledge and experiences.

Membership costs £14 per year. If you don't think that Club membership is for you yet do come along a guest to meet us all for £4. It is always good to see visitors.

22nd October 2025 The Club's **AGM** followed by a **talk by Avril Hughes** about **Salvias**. Avril gardens in Islip and also propagates many of her own plants.

26th November 2025 A pre-Christmas Social Evening with a quiz, festive drinks and canapes.

28th January 2026 Joff Elphick – Crayfish on the Lawn

25th February 2026 Pip Smith - The Resilient Garden focusing on Drought

25th March 2026 Geoff Oddy – Evenley Wood Garden throughout the year

22nd April 2026 Vanessa Berridge - Great British Gardeners

For further details please contact Walter Sawyer secretarylbgardenclub@gmail.com

Chivel Farm, Heythrop

On the most glorious September afternoon with blue sky and puffy clouds, we had our final garden visit of the summer, this time to Chivel Farm, Heythrop. This is the most beautiful garden, in an idyllic setting, lovingly created over the last 50 or so years by Rosalind and John Sword. The large colour co-ordinated beds slope gently down to their farmland beyond and the distant countryside. The garden has been cleverly designed for year-round interest with unusual trees, shrubs, herbaceous plants and a white garden. There was certainly still plenty of colour provided by dahlia, phlox, sedum, colchicum, rosa, salvia and anemone to name but a few. The two lady gardeners accompanied us round, answering our many questions and a very enjoyable afternoon was had by all, culminating in tea and cake in the large conservatory, or outside in the sun on the terrace.

This was the fifth garden visit of the summer and they have all been most successful, plus having the added bonus of four of them being extremely local and involving very little travel distance. Thanks to all of you who have supported the club by attending.



Celia Sawyer

Pineapple Cake

The moist fruit cake that I made for our tea on the visit was commented on and interest was shown in the recipe. It originated about 30 years ago when we visited Sue and Dick Shacklock's garden at Wheelwright House on Old Hill in Long Compton. It was several years before we moved to the village. Sue had made a moist pineapple cake for our group's tea which we all waxed lyrical about and the recipe has been shared round ever since. It has even been sent to America and Australia! It has certainly stood the test of time. The title of pineapple cake is perhaps misleading, as it just looks like a very moist fruit cake, which it is.

Ingredients

1 14oz (400g)	Tin of pineapple crush (tins sold actually hold approx. 16oz – remove 2 tablespoons before adding to the saucepan)*
1 lb (450g)	Mixed dried fruit
½ lb (225g)	Butter
½ lb (225g)	Granulated sugar
1 teaspoon	Mixed spice
1 teaspoon	Bicarbonate of soda
½ lb (225g)	Self-raising flour
2	Eggs

In a large saucepan, mix pineapple crush, dried fruit, butter, sugar, soda and spice. Bring to the boil and simmer for 2-3 minutes. COOL.

Add flour and eggs and mix well.

Place in paper lined 8" cake tin.

Bake at 300 F, 150 C, 130 Fan, Gas Mark 2 for 1 hour 20 mins (that is what the recipe says but it can take quite a bit longer) until brown on top and reasonably firm.

Cool in the tin.

Best made a day or two before otherwise it can be too crumbly to cut up.

* If you can't get pineapple crush, get chunks and break them up briefly in a liquidiser.

Celia Sawyer

It's mid-September at the time of writing and the local wildlife is in a state of flux. The hedgerows are quiet, the fields are being tilled after an early harvest and there seems to be a pheasant poult lurking around every gateway. In my younger carefree days I'd be gearing up for my annual pilgrimage to the Isles of Scilly to look to look for rare birds. These days I'm happily pounding the local footpaths with Bella and keeping out of the way of my teenage daughter; but, I haven't forgotten it's migration time, which means that anything could turn up, even around here.

One walk that I'd like to encourage you to take, if you haven't already, is the footpath from Stourton to Whichford and back. Aside from being a wonderful way to spend a couple of hours it is, in so many ways, a snapshot of all the habitats we have locally - farmland, woodland and running water – which means it can offer all sorts of wildlife if you're keeping your eyes open.

I start the walk by going out of my house and straight up the footpath (just before the Whichford turn in Stourton) but you can also take the footpath that leads on from the end of Berrils Lane in Cherington (give John a wave as you're passing). Both options take you up the southern side of the valley. You're looking for red kites and buzzards up here while the autumnal hedgerows often contain yellow hammers, bullfinches and the odd chiffchaff. There are gazillions of pheasants around, so if you're taking your dog it's good idea to use a lead. You don't want a spontaneously combusting gamekeeper on your conscience. If you're quiet and out early then a muntjac or a roe deer is a distinct possibility. I've found that if you're downwind from them and stand still, they can fail to detect your presence and sometimes end up trotting right past you.

At the top of the valley you're going to bear right for a bit then head over the road into Whichford Woods. You've then got just over a mile of superb woodland that contains nuthatches (listen for the liquidy 'dwip-dwip' call) siskins and redpolls. The woods are mixed conifer and deciduous and contain some of the largest and tastiest sweet chestnuts in the area. So, take a bag to collect a few, there will be loads of windfalls by the time you read this. At the end of the woods you descend down towards Whichford and finally emerge into a field and from there you go into Whichford village.

From Whichford you go back into the farmland and follow the stream. This is my favourite bit. You walk along the edge of a heavily wooded valley with the bubbling tributary to the Stour some 50 feet below. It just reminds me of valleys

I've been through in south America and Asia and I almost expect the whiplash call of something tropical to resonate in the silence. Go quietly as it seems to be the hang out of one solitary fallow deer.

From there you're heading back through the fields behind Lanes End Farm where the grassy areas are good for skylarks and meadow pipits which flush from the ground as you're walking.

Finally, you'll end up near the distillery where a nice cup of coffee or something a little stronger would be a great way to finish the stroll. One tip – download an app called 'footpath' onto your phone (there's a free version) which will detect where you are and shows nearby footpaths as orange lines. It's useful as a back up to the way markers.

David Sewell

WALKING NOTES

Editor: Stuart Brown

A walk to remember!

Recently this column has been based on a series of themes - long distance walks, those with a literary or artistic bent - but this time, for want of further imagination, I determined to write about our most recent (September) walk. Most have passed without incident and featured only companionable conversation, anxious looks at the clouds and the welcome lunch.

This walk proved different! In advance I promised but one stile, no significant uphill sections and rather different countryside with sheep, dry stone walls and a lengthy section through Jonjo O'Neill's stables at Jackdaws Castle where we could see large numbers of horses being exercised.

I did point out we would need to have a car strategically placed around half-way to ferry along a busy stretch of road and that the chosen pub was unfortunately closed so we would have to drive from the finish point to the "nearby" Farmers' Arms.

Things did not start well; one of our number had awoken to discover a flat tyre and an embedded screw: I missed the turn to the pre-determined parking space, so we started later than planned. We stopped to admire the church (a walking pole left behind) and gravestones at Cutsdean with the burial place of Bert Saddler (pictured) much admired.



Making our way up a steeper than remembered section to the second or third stile we realised we were one down. She (no names, no pack drill) was sitting recovering from a near fainting episode, surrounded by 4 curious but concerned horses.

We decided that a car would be needed (locals provided a lift back) and the rest of us resumed the walk over yet further stiles before a long stretch which most labelled "uphill" and arrived at the point where my car should have been only to find an empty layby. The car appeared to have been stolen - a long conversation

with Gloucestershire Police ensued and ended only when I was alerted to the fact I had mistakenly parked it some 100 yards down the road at an identical junction with an identical layby.

We resumed the walk through the gallops with not a horse to be seen down to the starting point where we set off for the chosen pub. I had correctly named the pub but not the village, so further confusion ensued before all arrived to be given a warm welcome, served with freshly cooked food and (for some) much-needed local beer.

All ended well, but next time others will be responsible for the organisation, so please do join us!

Stuart Brown scbqc1@gmail.com



The LINK is your local monthly Community Magazine.

It has a circulation of 700 across the South Warwickshire Seven Benefice covering the villages of Barcheston, Barton, Burmington, Cherington, Long Compton, Whichford and The Wolfords.

We're always pleased to welcome new subscribers. At just £12.00 for a calendar year subscription, this represents excellent value and is a great way to stay connected with the news of events and stories in your local community.

We're keen to expand our circulation, so sign up and we'll add you to our readership and deliver to your door each month. Just contact our Subscriptions Manager David Cleave subs@outlook.com

SCHOOL NOTES

News from Acorns School

Acorns Primary School: Autumn Term Kicks Off! We've had a fantastic start to the new school year, with children returning full of energy and enthusiasm! It's been a pleasure to welcome new members of staff who have already become a part of the Acorns family. Thank you to all the parents and carers who joined us for our Curriculum and Meet the Teacher events—it was lovely to see you all. We're also incredibly grateful to our brilliant PTA, who hosted a wonderful welcome-back event with tea and cakes in the orchard.

Little Acorns Nursery Do you know a family looking for a nursery place? Our Little Acorns Nursery has been holding special Stay and Play sessions on Saturdays, and we're keen to share the wonderful opportunities our setting has to offer. Please help us spread the word; there are Nursery posters located on the village noticeboards for further information.



A Summer Transformation What a transformation at the school this summer! Following the floods and leaks last year, our main corridor has been completely renovated. The previously gloomy hallway is now filled with light and colour, thanks to new paint, carpets, ceilings, and lights that have brightened up the space incredibly, creating a more welcoming and cheerful

environment for everyone. A huge thank you is also in order for one of our dedicated parent governors, who, with the help of some enthusiastic young volunteers, kindly repainted the school gates. The new maroon colour looks fantastic and gives the school a fresh, smart look. These amazing improvements have made a significant difference, and we're very grateful for the hard work and community spirit that made it all happen.

A Word of Thanks We would like to extend a huge thank you to the Village Fete Committee for their incredibly generous donation of £750. This wonderful contribution was raised at their hugely successful fete at Aunt Phoebe's Recreation Ground. We will be spending this money directly on the children by

purchasing additional resources for our OPAL (Outdoor Play and Learning) project, ensuring our pupils benefit from this thoughtful gift.



School Sports News We are so proud to announce that we have received the Bronze School Games Award! This award recognizes all the sports and OPAL activities our pupils participated in throughout the 2024-25 school year. We're already looking forward to another year of exciting events and sporting successes. Our new scooters are a big hit with the children and they are thoroughly enjoying whizzing round the orchard track at lunchtimes!

Stay Connected We're making it easier than ever to keep up with everything happening at Acorns. Check out our new website at www.acornsprimary.co.uk for the latest updates. You can also follow us

on Instagram @acornsprimaryschool to see photos and news from around the school.

Join Our Team! We're currently hiring for a Midday Supervisor to join our friendly team. If you're interested in a rewarding role, please visit the vacancies page on our website or check our Instagram for more details. We also still have a vacancy for one Community Governor to help set the direction and ethos of our school and be a valuable part in the future success of Acorns Primary. If you know anybody who might be interested, please ask them to come and talk to me (Mrs. Young) or to contact Gary Stokes, our Local Academy Council Chair via the school email address admin2639@welearn365.com. To ensure that the Local Academy Council is properly balanced, these positions cannot be filled by any of our current parents as all of our Parent Governor positions are full.

Hannah Young

GIVE YOUR CHILD THE BEST START!

15 & 30 HOUR FUNDED
PLACES AVAILABLE FOR
3 & 4 YEAR OLDS

HIGH-QUALITY
SCHOOL-BASED
NURSERY EDUCATION



Little Acorns is a vibrant and nurturing nursery, where children thrive through play-based learning, engaging activities and a stimulating environment.



Our experienced and dedicated team provide a seamless transition into school life, ensuring your child develops essential skills, confidence and a love of learning.



01608 684 654



ADMIN2639@WELEARN365.COM



BARCHESTON WITH WILLINGTON PARISH MEETING Advance Notice.



The next Village Meeting for Barcheston and Willington will be held on:
Thursday October 9th at 7:45pm in the Village Hall, Burmington.

This is an opportunity for you to keep in touch with Village and District affairs, to raise any concerns or opportunities you may have and to become part of the village discussion .

Points to be discussed will include:

Matters arising at the last meeting, Defibrillator management, Housing Needs Survey, Update on the South Warwickshire Local Plan and other local planning requirements, Bonfire Night and the local Councillor Update

Please come and give your support. We look forward to seeing you all.



Barton Village Produce Stall

It was not called a village produce stall in the early 1990's! Barton has always had a tradition of holding a village fete and in the 1990's Michael Hughes-Hallett who lived in the Old Rectory and was a keen gardener always laid out his surplus plants around the oak tree during the fete for sale. After the fete, unsold plants were left by the tree for people to take with a request to put something in a plastic box on the seat around the oak trunk.

In the late 1990's, early 2000's, Gillian and Hamish Cathie put the fete onto a more organised basis. Hamish regularly hired a large single pole marquee adjacent to the memorial fountain for sales tables, the stage for a band and he also arranged for an alcohol licence. Michael Hughes-Hallett made his plant sale more organised although the problem with plant sales was, and still is, timing. If the fete was late in the summer when the planting season was over, far fewer suitable plants could be offered for sale. Surplus plants were still left for sale but it was haphazard and most were taken from the village green for free.

In 2005 Maggie Pettifer, who had arrived in Hemmings Farm in 2003, took on organising the fete. She was a keen gardener and each spring set about growing plants for the fete. The fete style was also changed with open sided tents borrowed from Great Wolford set up around the sides of the village green for specific organised sales stalls including Suzie Coker's high-quality clothes stall (with changing room!), an extensive tombola, auction and, for the first time, a village produce stall with cakes, jams and in season fruit for sale. Maggie expanded the plant sales into the yard beside Hemmings Farm which for some years had three sales tables with three helpers to cover three different categories of plants. By opening mid-afternoon with a well-run bar, music, and fish and chips the Barton fete became well known as something different and a good way to finish a Saturday afternoon.

It was the left-over plants from the plant sales area which led to the very early Village Plants Stall on the village green with a notice to attract passing motorists. To start with plants were priced and the money was collected in an ex-ice cream plastic carton until inevitably it was stolen and Jim Sked the blacksmith very kindly made the red collection box, with padlock, which is still in used today and, at the time, was bolted to the stall table.

In 2012 a survey of the church roof recommended that it required some major work to keep it stable. A grant was given by the church authorities on the condition that the village made a contribution which, for the number of inhabitants at the time, was substantial. Besides very generous individual contributions from village families the Village Produce Stall as we know it today, was uncoupled from the fete “left over” plants, and placed on the village green from the first day of summer with an expanded range of produce ranging from in season asparagus, rhubarb, plums, greengages, strawberries, raspberries, eggs and, most popular of all, jams, chutney, marmalade and freshly baked cakes. Word soon spread so that locals, particularly on the school run to Kitebrook, made a point of passing by to buy the fresh local offerings often picked or baked and sold the same day. Plants, in season, ready for planting and cut flowers made good sales.

With hindsight it was fortunate that ££££ were still in everyone’s pockets before credit cards and mobile phones took over for small purchases. Customers could not get change and the red collection box was regularly emptied of tens and sometimes the odd hundred pounds. Over several years the stall contributed several thousand pounds to the church roof fund

So, an enormous thank you to all who have contributed so generously to the produce table, both in the past and more recently. It was re-started by Tomas Fenner-Leitao as a project over the summer, with funds raised going to the church - and we hope very much that the tradition can be kept alive.

In one hundred years’ time when Barton is petitioning for a motorway service area on the Barton Bypass around the city of Moreton there will be a photograph in the entrance of the traditional Barton fete and the Village Produce Stall – what a marvellous legacy!

John Castle



VILLAGE NEWS

Burmington

Editor: Graham French



The CAMEO Spirit

Since its formation in 2008, the CAMEO Lunch Club has, with the exception of the pandemic months when meals were delivered to members' homes, only had to cancel a single meeting due to flooding in 2008. This remarkable record nearly came to an end in September when, just hours before the lunch was set to take place, members were informed that the event would be cancelled due to electrical issues at Burmington Village Hall.

But the CAMEO spirit prevailed once again. Jan and Dennis Lennon quickly rearranged their home, Pond House, clearing a room to accommodate the 23 members who had booked to attend. Supported by Irene Clarke, who had already set the tables at the Village Hall, and Brenda Fitch, who contacted every member about the last-minute change of venue, the lunch proceeded as planned.

With the electrical issues now resolved, members look forward to gathering again at Burmington Village Hall for the October lunch.

Never Give Up



CAMEO members marked the 80th anniversary of VE Day with a talk by Sue Roe, who shared the extraordinary story of her father, Flight Lieutenant Charles Dallas, who served in the RAF during World War II. Sue recounted how her father survived a series of harrowing experiences, including crashing his Hurricane fighter in the Libyan desert, being shot down, ditching his Wellington bomber in the Mediterranean, enduring imprisonment in the notorious Stalag Luft 3, and surviving the 1,000-mile 'Long March' in temperatures of -20°C at the war's end.

Sue's book, *Never Give Up*, which chronicles her father's incredible service and war diaries, has now been published. She has dedicated the inspiring book to the resilience and courage of the human spirit.

CAMEO Lunch Club

Next Meeting: Tuesday, 14th October, 12:00 noon for 12:30 pm. Burmington Village Hall, Book with Brenda Fitch 01608 664313

Dennis Cummings

Bingo Night

33

46

Raffle
£1 Ticket

£10 /
6 Games
+ Flyer

B.Y.O.B

39

Sat Nov 14th
6:30 for 7pm
Burmington Village Hall

74

Teas, Coffee
+ Juice for
sale

97

23

4

Limited spaces, reservation line: 07966 849149

Cream Tea

Jam Festival Celebration
Burmington Village Hall



Tuesday 4th November
2:00-3:30pm
£3:00

Scones, jam and cream
Tea and coffee

The winners of the jam categories will be announced and
homemade jam for sale.
Proceeds for church funds

VILLAGE NEWS

Cherington with Stourton

Editor: Christine Dudfield



Coffee Shop

Saturday 18th October
10:30am-12 noon

The Hall Stourton CV36 5HG

Bacon baps, coffee, tea, hot chocolate and cake.
Eat in or takeaway

We are always looking for people to help out if you want to get involved, please contact me on 07866 127409.

Christine Dudfield

Brailles Picturehouse

Doors open 7:15pm to Start 7:45pm

Friday 17th October - Grumpy old Men (1993) Comedy

John Gustafson and Maz Goldman are two neighbours who have been at each other's throats for years. The two friends turned foes find their rivalry escalating to new heights when they fell for the same woman. However, amid their feud, they still find reason to help each other.

Stars - Walter Matthau, Jack Lemmon, Ann-Margret, Daryl Hannah

Future Dates:

14th November - Maria Callas

Possible others depending on availability,

- Flow
- Thursday Murder Club
- The Salt Path
- Downton Abbey

Deirdre and Team

Feldon Valley Military and Naval History Society

the next meeting will be at
The Hall, Pinfold Lane Stourton, CV36
5HG

on Wednesday, **15 October 2025**
at **8.00 pm** for a talk by Peter Stoddart:

**"Now, gentlemen, let us do something today
which the world may talk of hereafter"**

- Cuthbert Collingwood, morning, 21 October 1805, off Cape Trafalgar

**British naval strategy and tactics in the
eighteenth century**

contact: Peter Stoddart
at: petercstoddart@gmail.com



Feel Good Friday Social Afternoons

Social Afternoon dates for your diary are Fridays 3rd, 17th and 31st October 2:00pm to 4:00pm at The Hall.

Don't forget to pop Saturday 29th November in your diary for the Christmas Family Prize Bingo at The Hall. As usual, doors open at 7:00pm, eyes down at 7:30pm. Please bring your children and grandchildren. We are looking forward to seeing you there.

For more information, please contact me on 01608 663320

Vanessa Compton

Village Lottery Draw

1st James Ind £80 2nd Paul Marriott £45 3rd Robyn Durie £30.

Congratulations to our winners and thank you for your continued support. For more information on joining, please contact me

Averell Kingston aap.kingston@gmail.com 07984 00367

Christmas Greetings in support of St John the Baptist Church

We are running the Cherington and Stourton Christmas Card Amnesty again this year. If you would like to make a donation and are already on the Christmas Greetings List, which will be distributed with the December Link, we will assume that you wish to continue.

If you would like to be removed or wish to be added please contact Pam on 07989644614 or Sherry on 686420. Alternatively, you can email us on Nsl_barker@hotmail.com

Replies by the 5th of November would be helpful.

Pam Brookes and Sherry Barker

Harvest Festival Service: Sunday 19th October at 10:30am

Our Harvest Festival celebration in the church will be held on the slightly later date of Sunday 19th October. The harvest delivered a mixed bag for our farmers, and was all in by end of July/beginning of August. Thank you to John 'Tufty' for your helpful farming notes. I do remember the harvest of 1976 because ours was all in before 5th August, my sister-in-law's birthday.

The Flower Team will be decorating the church ahead of the service. However, I would be grateful for donations of produce or store cupboard items to add to the display. Everything donated will be taken to a local food bank afterwards.

It is especially lovely if the children of our village (parents please help) are able to bring something for the service., A basket of apples or pears perhaps, or a posy of flowers. These can be brought on the day, or between 10:00am and 12 noon on Saturday 18th, when I will be at the church to receive them.

Sarah Scotter



Photograph: Christine Dudfield



Our September Social Saturday was a big success thanks to the excellent demonstration given by our first responders on how to conduct CPR. Certainly, it is a skill that could save a life and no doubt we will be inviting the first responders back again soon if they are prepared to give us some further demonstrations that could help with basic first aid. Our thanks go out to them. It was nice to see our regular Social Saturday friends and some new folk from further afield. This month we have some different activities planned so please keep a look out on our website for more details.



September also saw the return of Race Night. Last year it was our most popular event and great fun was had by all betting on horse races, buying horses, sponsoring races. At the time of writing we are all getting our Ascot hats ready for another great, fun evening!

Our next event will be the return of Quiz Night which is on 4th October at 7:00pm. Our ever-popular quizmaster, Simon Bing, is preparing his devilishly difficult questions to get us into the swing of the pub quiz season, so why not perk up those little grey cells and get them in training for the season ahead. Please see the advert for details and please contact Karen at lcvillagehall@yahoo.co.uk to reserve your place as soon as possible. There will be the legendary cheeseboard for each table as usual!

Don't forget our fruit spirit event in November and get ready to submit your finest 2025 vintage for the judging panel!

As usual, we are always on the look-out for helpers so please drop us a line at lcvillagehall@yahoo.co.uk if you are willing to volunteer for our charity. Thank you so much.

Long Compton Village Hall Committee



Join us for

Quiz Night

7pm, Saturday 4th October 2025
Long Compton Village Hall

*Enter a team of up to 7 people
Pay bar and cheese sharing board
Entry £10 per head, bring cash for games!
Booking essential for catering purposes
To book email lcvillagehall@yahoo.co.uk*



Join us for

Social Saturday

11th October 2025

11am - 1pm

Long Compton Village Hall

*Free entry - savouries - cake - chat
Music - talks - stalls*



100 Club

The September Draw was done at the Village Hall Social Saturday on 13 September, and the winners were:

1st	Mr and Mrs Treadaway	2nd	David Haine
3rd	Paul Morley	4th	Chris Galloway

Chris Galloway 684234

Long Compton Fete-Happy Memories!

It's now the season of mists and mellow fruitfulness and our fete is just a memory but what a memory! The team reckons that 2,000 people were in the field for the big day and the crowd enjoyed Kaleb opening the show, the wonderful Lancaster fly past, the classic cars, the dog show, the music, the stalls and so much more. For those with the energy, Long Compton Sports Club provided after hours entertainment with a licensed bar, DJ Anthony Gofton spinning the discs and a pizza van churning out the best pizzas.

I am the treasurer, so my job is counting the takings and banking them. We made a net profit of £3,400 and with the Sport Club, the PTA, The Ebenezer Chapel and the Village Hall, the day netted over £6k for village organisations. Our committee decided to make donations to:

- Acorns Village School
- Motor Neurone Disease Association
- Shipston First Responders
- Friends of Long Compton Church.

The committee are now planning for next year, so if you have any ideas, please let me know at roger@lcfete.org.

Roger Billins, Treasurer Long Compton Fete Association

Comptonians

We shall meet on October 15th at 12:30 at the Village Hall for fish and chips. All welcome.

Margaret Welsh 684238

Compton District History Society

The first meeting of the new season took place on Wednesday 10 September. It consisted of a short AGM followed by a talk given by Bill Cook, entitled *'History of Long Compton Part 1, up to 1600'*. He started from about the year 600. It was fascinating as Bill showed how important Long Compton had been for a long period before the Black Death. He also was able to let the audience know about the presence of three Danish owners of the village before and just after the Norman invasion in 1066.

The next talk will be on Wednesday 8 October at 7.30 in the village hall when Graham Sutherland will talk about Warwickshire Inn signs. The normal charges will apply, All meetings are £1.00 for members. Guests are very welcome - we charge an entry fee of £3.00. There will be tea or coffee after the talk.

Christopher Fance

Grounded Gliders

A visit to Aunt Phoebe's playground turned into quite an exciting afternoon for our grandson Eoin, on a sunny Saturday in August.



Whilst he was playing happily, we became aware that a glider was descending quite low above the rooftops of some nearby houses. Just in case help was needed, two of our group set off in the direction of the track to the woods, only to find the glider had landed in one of the nearby fields. When the rest of us arrived, at the speed of a 4-year-old, we caught up with the pilot - the lovely and very young Matt. He explained the conditions that day had got the better of him and was forced to make the landing, thankfully in a recently harvested field. He had in fact been taking part in a race from Stroud to Shenington. After

explaining the workings of the glider, and allowing Eoin to sit inside, we became aware that another glider was having the same difficulty and was also forced to make a landing nearby...and then surprisingly, a third one!

As all the pilots were safe and gliders undamaged, we left them waiting for their rescue teams to arrive and be returned back to Stroud. Quite an exciting afternoon for a 4-year-old and even for the adults!

Karen and Martyn Young

Congregational Chapel

Supported by entries from beyond Long Compton, the Craft and Flower show was able to put on a decent display of entries for our judges to assess. Andy Deller of Ascot won the cup for the most outstanding entry with his basket of vegetables which comprised of over 20 different varieties.

£100 was raised for Macmillan Nursing.

This was the first opportunity for visitors to view the new cream floor and walls and there were many favourable comments although the decorative work is not yet completed. Flood prevention work continues to Chapel and Manse

Sally Franklin 07870 545431 or Elizabeth Gilkes 07791 621778
longcomchapel@hotmail.com



Join us for Community Coffee



at

St Peter and St Paul's Church, Long Compton

on

Wednesday October 1st 10.30am to 12.00 noon

All are very welcome,
Young, Old, Families, Dog Walkers and Newcomers to the Village.

VILLAGE NEWS

Whichford and Ascott

Editor: Melanie Arnold



The Reading Room Draw

The Reading Room draw winner for September is Piers Gregson.

Jenny Scrivener

Whichford & Ascott Flower Show & Fete

We were again delighted to welcome so many visitors to the village green on August Bank Holiday Monday to enjoy the afternoon's attractions. The weather was hot and sunny for this end of the summer event.

Exotic Animal Experience brought furry and scaly creatures, not usually found in the Cotswolds, to observe and handle. More entertainment for children was provided by a traditional Punch & Judy Show (with enthusiastic audience participation), Face Painting by Art Vision, the Teacup Roundabout and traditional sports and sideshows.



There was plenty to eat and drink with delicious homemade cakes at the Vintage Teas, a pig roast and the fairground-style sweets stall. The Cotswold Coffee Company did a brisk trade in iced lattes and there was a permanent queue at Mr Rosetti's ice cream van. A pop-up Bar over at The Norman Knight served something a little stronger.

The Bric-a-Brac stall, Nearly New Clothes and Book Stall offered many great bargains. Home-made cakes, bottle stall and local produce stall also did brisk business. Thank you all for your donations for these stalls. Canines of all shapes, sizes and ages competed for rosettes in the ever-popular Dog Show. Live music from local band Wired added to the fun atmosphere.

There was a pause in the proceedings as the Spitfire appeared in the distance on the way to the show, accompanied by the music from The Dam Busters. Three loops over the Green and then it roared away to waving and applause from the crowd. A special moment.



We were delighted by the number of entries in the Flower Show classes. The Marquee was a great attraction - full of colour and a showcase for local talents. Congratulations to all the winners of the classes and the many cups.

Enormous thanks to everyone who contributed to making the show such a success. There are so many tasks where we need help to make the show happen and give everyone a great afternoon, not to forget a big thank you to all our visitors who come to enjoy this traditional village event.

Our thanks also to Henry from Hook Norton Butchers for providing the pig roast and sponsoring the raffle and to Matthew Cheney of Aylesmore Farm for donating the milk for the teas.

Initial proceeds have been published on the village noticeboards and the final accounts will be presented at our AGM, date to be advised.

We look forward to welcoming you to this event again next year.

The Flower Show Committee



St Michael's Harvest Service
on Sunday 12th October
At 10.30am
With a breakout craft group
for Primary school age children.



VILLAGE NEWS

The Wolfords

Editor: Lynn Mathias



The Wolfords Village Hall One Hundred Club

The September winners were as follows:

1st Jane Revere 2nd James van Helden 3rd Geoff Shuttleworth

Many congratulations to the above. Please let me know if you would like to have more shares as the club is still short of 100 shares. Of course, multiple shares do increase the chance of winning! All proceeds go to help with the upkeep of the village hall.

James van Helden



SHIPSTON FOOD BANK

and

HARVEST

Sunday 5th October

11.30 am

St Michael and All Angels Church

Great Wolford

with a rousing performance by Shipston Town Band

Can you spare any tinned, dried or packet food to help those who are struggling through these difficult times? We're collecting for the local Food Bank and there will be donation boxes in the church entrance hall this week, There will be a light buffet after the service in the church, and all are welcome



Coffee, Cake and Chat at Wolford Church

Tuesday 14 October 11:00am-12:00

Come and join us for a chat over coffee (or tea) and cake at St Michaels Church

Come and meet new friends (or old ones!) Share your interests and just chat
Everyone welcome

Bingo and Fish and Chips Supper (or a takeaway service)

Saturday 11 October at 7:00 pm at Wolford Village Hall

- A really good night out with a first-class supper
- Bring your own drinks and we'll provide the glasses
- Cash prizes to be won on the bingo and a raffle

Book now: £13 per person

Ann McKenna (674 009)/annmckenna3@sky.com

In aid of St. Michael and All Angels Church, the Wolfords

For the takeaways

Due to the success of our previous takeaways, we will be offering a takeaway service between 6:00pm and 6.45pm

Here's how it works: we need at least 50 orders to make the van's visit viable so now is the time to express an interest in either the Bingo or a takeaway by emailing Ann McKenna (see details below) with the number of meals you would like. Cost for the takeaway is £12.00 per portion

Cut-off date for pre-ordering is Saturday 4th October and to keep the delivery on the night quick and efficient we're asking for payment to be made in advance when we confirm your order. Of course, you don't need to be a Wolford resident to join in the takeaway– if you can come and collect then you're very welcome to place an order. Once we have 50 orders confirmed we can take further orders up to 10th October

To order please contact: Ann McKenna (email: annmckenna3@sky.com)

(Tel: 01608 674009) Please help us to maintain the church and churchyard at the centre of our village.

Volunteers' Day at The Village Hall

We would appreciate any help with the village hall on Saturday, 18th October from 10am onwards to undertake some maintenance work and to tidy up the storerooms including the kitchen which needs to be cleared of any unwanted items / equipment. The fire doors require painting outside after being prepped, weather permitting.

If you can spare some time, that would be great and will help to keep the cost of repairs to a minimum. Refreshments will be provided.

Many thanks in advance.

James van Helden jamesvanhelden@hotmail.com

Treasurer Vacancy for The Village Hall

The current Treasurer, Isobel Murphy, will be resigning from the committee and our huge thanks for all her support in controlling the accounts for over 10 years and for her sound advice on the committee.

This vacancy needs a replacement to have an effective committee in managing the affairs of the hall and we would welcome any interest in undertaking this role. Alternatively, if you know anyone who is willing to help, please let me know.

James van Helden jamesvanhelden@hotmail.com



The LINK can offer your local business...
Advertising across SW7 Benefice
directly into the community.



KopyRite printers



PERSONAL CHRISTMAS CARDS

50 x A6 Greeting / Christmas Cards for £40 or
25 of 2 designs (50 cards in total) for £45

50 x A5 Greeting / Christmas Cards for £50
25 of 2 designs (50 cards in total) for £55



ALLEN & SON

FUNERAL DIRECTORS

EST 1928

Independent family-owned Funeral Directors
Always here to care for your family

- Friendly and professional care and support
- 24 Hour Service
- Qualified Funeral Director
- Funerals tailored to individual needs and wishes
- Peaceful and spacious Chapel of Rest
- Funeral pre-planning
- Convenient on-site parking

Tel: 01608 650633 ~ 24 HOUR SERVICE

London Road, Moreton-in-Marsh, GL56 0HH

Email: office@allenfunerals.co.uk

Website: www.allenfunerals.co.uk



Allen & Son Ltd is an appointed representative of Golden Charter Limited trading as Golden Charter Funeral Plans which is authorised and regulated by the Financial Conduct Authority (FRN:965279). Registered in England No. 02511598 Registered Office: One Fleet Place, London EC4M 7WS

THE LINK

Do you have a non-business event to held in the Benefice? Then you can promote your event **FREE** of charge in The LINK. If the event is outside the Benefice but would be of interest to our readers, you can advertise for:

- £5 a quarter page
- £10 a half page
- £20 a full page

Please contact Cathryn Aitken
for further details
adverts@swlink.org.uk



Fellowship
Profession
Celebrants



**INDEPENDENT CELEBRANT
THANKSGIVINGS & CELEBRATION OF LIFE –
FUNERALS & MEMORIALS – LOSS OF A PET**

It is important to celebrate the life of the person you have lost and to say goodbye in a joyous and reflective way.

My empathy coupled with my ability to listen enables me to craft a caring, bespoke service, capturing the character and essence of your loved one.

Working with our local funeral directors, it is my privilege to support you through this final commemoration of a life much loved and well lived. Please contact me for any further information

www.wendyvealecelebrant.com
info@wendyvealecelebrant.com
Tel: 07831 098271

Long Compton Village Stores

Main St, Long Compton.

- ✓ **Takeaway food: hot pies, fresh cut sandwiches, tea & coffee etc.**
- ✓ **Instore bakery, cakes pastries etc.**
- ✓ **Dry Cleaning**
- ✓ **Greengrocery, dairy products, confectionery**
- ✓ **Gluten free products**
- ✓ **Newsagents & Stationery**
- ✓ **Off licence**
- ✓ **Flowers**
- ✓ **Home delivery**

Tel: 01608 684277



SNJ CARPENTRY AND GLAZING

WWW.SNJCARPENTRYANDGLAZING.CO.UK

**SPECIALISTS IN
INTERNAL AND
EXTERNAL CARPENTRY
AND GLAZING.**

- Door hanging
- Skirting and Architrave
- Bespoke built in cupboards
- Wooden flooring

- Replacement Windows and Doors
- New Windows and Doors
- Replacement glass
- Replacement hinges, handles or locking mechanisms



**CONTACT US FOR A NO OBLIGATION QUOTE:
07851 436 136 / 01608 661352**

KopyRite
printers

Ask us about our
SAME DAY SERVICE

01608 64 65 66

PULL UP BANNERS **MENUS**

NEWSLETTERS **BOOKLETS**

GREETING CARDS **LABELS**

POSTCARDS **PVC BOARDS**

LEAFLETS **VINYL BANNERS**

LARGE FORMAT **STICKERS**

POSTERS **LETTERHEADS**

OUTSIDE SIGNS

NCR SETS **INVITATIONS**

NOTE PADS **BROCHURES**

CARD PAYMENTS TAKEN & FREE DELIVERY ON ALL ORDERS
print@kopyrite.net | www.kopyrite.net

Little Compton Village Hall For Hire.

Includes fully fitted kitchen with two cookers, warming trolley, microwave and fridge.

Tableware and seating for 70 people.

£15 per hour

(excluding electricity)

For further information please contact

Clare at clareh26@gmail.com or Phone 01608 674494



VORTEX

JETTING & DRAINAGE

A 24/7 COMMERCIAL & DOMESTIC SERVICE

- Drain, toilet & pipework unblocking
- CCTV drain inspections and locating services
- Drain repair & maintenance
- Homebuyer drain surveys
- Gutter clearing

07943 584 741

info@vortexjetting.co.uk

www.vortexjetting.co.uk

**ADVERTISE IN THE
LINK FROM £17 FOR
A SINGLE ADVERT**

EMAIL: ADVERTS@SWLINK.ORG

Sun Rising Natural Burial Ground and Nature Reserve

A place of deep peace where loved ones can be laid to rest in growing woodland and wildflower meadows.



01295 688488
sunrising.co.uk

near Lower Tysoe



Blocked Ears?



EAR WAX can be troublesome and cause sudden loss of hearing, feel uncomfortable and itchy – but it can be easily removed at our clinic in Blockley.

The Willows

NORTH COTSWOLDS EAR HYGIENE CENTRE

Unit 47, Northwick Business Centre,
Blockley, Moreton-in-Marsh, GL56 9RF

Book Online: www.earhygienist.co.uk

Or contact Issy today: 01386 701650

issy@earhygienist.co.uk

D&D Enterprises



DAVE & DAUGHTERS
PAINTING & DECORATING

TEL: 07734 679 251

@: DAVE@DANDDENTERPRISES.CO.UK
W: WWW.DANDDENTERPRISES.CO.UK



For all your local Painting & Decorating Services

-  Internal & External
-  Domestic & Commercial
-  Fully Insured
-  Free, No Obligation Quote

dave@danddenterprises.co.uk
07734 679 251

Oats Health Foods



Comprehensive range of foods,
supplements, body care and
eco-household goods.

Upstairs a greeting card gallery
plus anything else that takes our
fancy.

26 High Street
Chipping Norton, OX7 5AD
Tel: 01608 64 65 56

John Napier Forestry and Timber

Trees purchased: standing, felled dead or live.

Hardwood Boards and Oak Beams available on request.

Seasoned, dry barn stored, locally-felled
firewood and kindling

07816 379836

jnapierforestry@yahoo.co.uk

website: jnapierforestry.com

Morgan Roofing Services

07765 228784



We are one of the leading roofing companies in Warwickshire and West Midlands. We undertake all types of traditional, domestic and commercial roofing work including: repairs and restorations, re-roofs and flat roofs, lead roofing, and built up felt roofing.

For a free quote, call **Peter Morgan on 07765 228784** or 01608 433032. Email: **morg11p@hotmail.co.uk**
We provide completely free no-obligation estimates for all jobs.

www.morganroofingservices.co.uk

Give us a detailed description of what you want done, and we'll respond quickly with a detailed, no-obligation estimate.

We also buy and sell second hand slates and tiles.



NEED A GOOD VENUE?

LONG COMPTON VILLAGE HALL

- Very well-equipped kitchen
- Ample parking
- Capacity for up to 100 people
- Separate room for smaller gatherings of up to 30 people
- Wifi available

To book email
lcvillagehall@yahoo.co.uk
Availability at
www.longcomptonpc.co.uk/your-community/village-hall



*Physiotherapy clinic & pilates studio
A helping hand to get you back to health*

Physiotherapy Sports Massage Pilates Classes

Visit the website for more information
or call to speak to a member of the team

T 01608 645 608

E physio@chippingnortonphysio.com

www.chippingnortonphysio.com

Rightio Plumbing & Heating

01295 203 138



We work in **Long Compton, Burmington, Barton-on-the-Heath, The Wolfords, Cherington** and all surrounding areas.

▶ COMPETITIVE RATES ◀

- ✓ Fast Response
- ✓ All Work Guaranteed
- ✓ Flexible Appointment Times

▶ **12 Month** ◀
Guarantee on labour!
Excludes blockages

▶ **OAP Discount** ◀
Speak to us today!

▶ **1-2 Hour** ◀
Emergency Response time!



OUR SERVICES

- ✓ Boiler Breakdowns
- ✓ Boiler Servicing
- ✓ Radiators & Pipes
- ✓ Tanks & Cylinders
- ✓ Toilets & Taps
- ✓ Leaks & Bursts
- ✓ Showers
- ✓ Clearing Blockages
- ✓ Gas Safe Certified
- ✓ Pipework Replacement



THE PERFECT PLACE FOR.....

Children's Parties
Family Occasions
Business Meetings
Fitness Classes
Craft Activities
Societies & Clubs
Weddings
Training Courses
& Much More.....!

**Cherington, Stourton
& Sutton-under-Brailes
Village Hall**

*Fantastic Facilities
Beautiful Setting*

Superb multi-use venue
Light, spacious and versatile
Separate rooms or Whole Building
One-off & regular bookings
Large capacity

We would love to host you!

Tel: 07775 765572
info@thehallevents.org.uk
www.thehallevents.org.uk



**EFM
CONSTRUCTION**



NORTH COTSWOLDS

PROFESSIONAL LIME AND CEMENT POINTING
GARDEN STONE/BRICK WALLS
LIME AND STANDARD PLASTERING
BRICK AND STONE REPAIRS
PROFESSIONAL BRICK WORK
SPECIALIST PLASTERING
BUILDING CONSERVATION

07939 144956

mattamytanzania@gmail.com

Based in Moreton-in-Marsh

HALL FOR HIRE

Burmington Village

Historic hall in a pretty location

Carpeted, heated hall

Well equipped kitchen

Tables, chairs & cloths

...all included in the price

Contact Irene Clarke 01608 656296

K.A. PERKINS

SITE CLEARANCE **PLANT HIRE** GROUND WORKS

Water Supplies, Drainage, Ditching

Road & Drive Construction

Tarmacing, Patios, Block Paving

DEMOLITION

Tel: 01608 686189

BUILDING

Mobile: 07702106739

R.Locke & Son
Independent Family Funeral Directors - Est 1853

Offices in *Shipston, Brailes, Kineton and Wellesbourne*



Generations of Care

For more information about our services, to view our funeral announcements and online donations, please visit

www.rlockeandson.co.uk

or call

01608 685 274



GOLDEN CHARTER 
FUNERAL PLANS

THE WOLFORDS VILLAGE HALL

Ideal for children's parties, meetings, classes,
family gatherings, BBQs, company training

- seats 50 - 60, (80 standing)

- excellent disabled access

- well-equipped, modern kitchen

Bookings:

<https://www.thewolfordsvillagehall.org.uk>

**Fed up with the headache of
bookkeeping?
Let me handle everything for you.
Professional Bookkeeping and
Payroll Service**

Vat returns* Annual accounts* Cash flow*
Monthly figures

Bank reconciliation* Using your system or
starting from scratch

Ann McKenna MICB CB.Dip PM.Dip
Leylands Business Services

07500 678206/ 01608 674009

anmckenna3@sky.com



**Member of the Institute of
Certified Bookkeepers**

TAXI!

CLARKES OF SHIPSTON

Licensed Private Hire
Airport Service

To book or obtain a quote call:

(01608) 661418

or email:

stuart.clarke@lineone.net




THE RED LION
a country inn with rooms



Delicious local food
Bar open 10am-10pm every day
Large beer garden with children's play area

Long Compton, Nr Shipston on Stour,
Warwickshire CV36 5JS
Telephone: 01608 684221
www.redlion-longcompton.co.uk

 @redlionlongcomp

QUIZ
SEASON STARTS
SUNDAY 12TH OCTOBER

High Performance Scandinavian Design



- Timber Windows and Front Doors
- Aluminium-clad Timber Windows
- Bifolding and Sliding Doors
- Period, Heritage and Conservation Options



**ENLIGHTENED
WINDOWS**

Truly the next generation of products



01608 684607
enlightenedwindows.co.uk



Book your clean today

01608 430177 - 07716 392463

Revive Your Carpets, Refresh Your Home

CARPET CLEANING SERVICE



**Why you need to get
your carpets cleaned**

Regular carpet cleaning not only keeps your floors looking great but also promotes a healthier indoor environment. Over time, carpets trap dirt, dust, allergens, and bacteria that affect air quality and wellbeing.

Professional cleaning removes these contaminants, freshens and extends carpet life.

www.fourshirescarpetcleaning.co.uk

LOGS DELIVERED TO YOUR DOOR

Hardwood Logs

Seasoned & Air-dried Ash

See website for Prices & Free Delivery areas including parts
of GL56, CV36, CV37, CV35

We also supply Hazel & Willow Stakes & Binders for
Hedgerows, Gazebos, Arbours, Pergolas, Fences & General
Garden Design, Bio-Engineered riverbank restoration.

SHOP ONLINE AT WOLFORDWOOD.COM
OR CALL PERCY ON 07788 778 000

Great Wolford Road, Moreton-in-Marsh GL56 0PE

WOLFORD  WOOD
Yourself, your visit

Scan to
shop





Care in the Community



Cotswold Community Care

Compassionate Care for people of the Cotswolds

Cotswold Community Care is a leading home care provider based in the Cotswolds. We offer a Live-in care service that can be a great alternative to leaving the familiar surroundings of your own home.

Our success is built around the quality of our carers and support staff who will carry out a **free, no obligation needs assessment** to establish what your individual needs are.

Whether you require personal care, assistance with daily activities, or would just like some companionship, we are dedicated to delivering the highest possible standards of live in care to enable you to continue living in your own home.

For an informal chat, please give our friendly team a call on 01608 663377



"I knew, through my work as a nurse at a local Hospital, of your good reputation and responsiveness before you started caring for my mum. However, it was only when she needed your help that I realised quite how good you are. It's been quite reassuring knowing that mum had been safe at home with your carers. I know that she is also grateful for the stability this has provided. Without your support, my mum wouldn't have been able to stay in her home for so long - and the way you have been able to increase care rapidly when she needed it helped with this." Philip Vial.

We have built our reputation on:

- Carefully matching the carer to you, our client
- Our support for daily activities
- Empathetic Personal Care
- Respectful Companionship Care
- Safe Medication Handling
- Excellent Meal Preparation

You will benefit from:

- Industry best yet affordable care
- The services of one carer who is carefully selected to best suit you, your needs, and your lifestyle
- Catering for your requirements and ongoing needs
- A personalised service

enquiries@cotswoldcommunity.care | 4 Granville Ct, Shipston-on-Stour, CV36 4PP | 01608 66 33 77