

THE LINK

A COMMUNITY MAGAZINE FOR THE
SEVEN PARISHES IN THE SOUTH
WARWICKSHIRE 7 BENEFICE

March 2023

£1.20



■ BARCHESTON with WILLINGTON ■ BARTON-ON-THE-HEATH
■ BURMINGTON ■ CHERINGTON with STOURTON ■ LONG COMPTON
■ WHICHFORD and ASCOTT ■ THE WOLFORDS

EVENTS DIARY

Contact: The Editor
Email: editor@swlink.org.uk

Events Update

February (VH = Village Hall; Ch = Church)

Weds 01	Community Coffee Long Compton Ch	10.30
Weds 01	WI Meeting Wolford VH	19.30
Thurs 02	Moreton Country Market	10.00
Fri 03	Feel Good Friday The Hall Stourton	14.00
Sat 04	Breakfast Burmington VH	10.00
Sun 05	Quiz Night Red Lion Long Compton	19.30
Weds 08	History Society Long Compton VH	19.30
Thurs 09	Moreton Country Market	10.00
Thurs 09	Long Compton Book Club	19.00
Fri 10	Lions Movie Townsend Hall	
Sat 11	Coffee Shop The Hall Stourton	10.30
Sat 11	Social Saturday Long Compton VH	11.00
Sat 11	Fish and Chips takeaway night Wolford	18.00
Sat 11	<i>The Railway Children Return</i> Brailes Picture Hse	19.45
Tues 14	Long Compton Walkers Red Lion car park	09.30
Weds 15	Comptonians Long Compton VH	14.00
Thurs 16	SW7 Women's Lunch Old Forge Stourton Hse	12.30
Thurs 16	Moreton County Market	10.00
Fri 17	Feel Good Friday The Hall Stourton	14.00
Sat 18	SW7 Men's Breakfast Cherington Arms	07.45
Weds 22	Gardening Club Long Compton VH	19.30
Thurs 23	Moreton County Market	10.00
Fri 24	Carers for Carers Kineton VH	10.30
Sat 25	70s Disco Long Compton VH	19.30
Thurs 30	Moreton Country Market	10.00
Fri 31	Traditional Jazz Townsend Hall	19.00



LINK cover photograph:

'Night Sky-Aunt Phoebe's' by Gary Smith

The LINK welcomes contributions for the front cover or elsewhere. Portrait orientation and good quality photographs or artwork preferred. Please send items to editor@swlink.org.uk

LINK cover and artwork produced by KMS Litho, Hook Norton.



The LINK has been kindly supported during 2023 by The National Lottery Fund (Awards for All).

THE LINK TEAM

Editor	Sara Billins	editor@swlink.org.uk
Treasurer	Martin McKenna	treasurer@swlink.org.uk
Advertising Manager	Keith Murphy	adverts@swlink.org.uk
Distribution Manager	Alan Holmes	distribution@swlink.org.uk
Chairperson	Keith Murphy	chairman@swlink.org.uk
Company Secretary	Martin McKenna	secretary@swlink.org.uk
Online Manager	Keith Murphy	online@swlink.org.uk

Village Editors

Barcheston & Willington		barcheston@swlink.org.uk
Barton-on-the-Heath		barton@swlink.org.uk
Burmington	Graham French	burmington@swlink.org.uk
Cherington & Stourton	Christine Dudfield	cherington@swlink.org.uk
Long Compton		longcompton@swlink.org.uk
Whichford & Ascott	Melanie Arnold	whichford@swlink.org.uk
Great Wolford	Lynn Mathias	greatwolford@swlink.org.uk
Little Wolford		littlewolford@swlink.org.uk

Feature Editors

Church News	Liz Clarke	officesw7@gmail.com
Nature Notes	Tony Partridge	editor@swlink.org.uk
Gardening Notes	Margaret Welsh, Miranda Arnold	editor@swlink.org.uk
Farming Notes	Lynn Mathias	farming@swlink.org.uk

Village Distributors

Barcheston & Willington	Maki Sutton	661539
Barton-on-the-Heath	Helen Seymour -Smith	674153
Burmington	Julia Anne Sykes	07497 088 882
Cherington & Stourton	Ebe McLeod	686278
Long Compton	Jean Taylor	684806
Whichford & Ascott	Carol Moore	684961
Great Wolford	Sue Rew	674380
Little Wolford	Colin & Gill Ablewhite	684962

Please note the copy deadline for April 2023:

Monday 13 March

The LINK is published by South Warwickshire LINK Ltd, a not-for-profit company limited by guarantee (reg. no. 07234681), and printed by KMS Litho Ltd, Hook Norton.

The opinions expressed in The LINK are not necessarily those of the Editor or any member of the LINK team. Whilst every effort is made to ensure accuracy of information printed, the Editor/team do not accept any responsibility for the consequences of any errors that may occur.

The LINK does not endorse any products, services, or companies. The appearance of advertisements in this magazine is not a guarantee of those products/services or the companies that manufacture, distribute, or promote such products/services.

All information held by The LINK is strictly confidential and is held purely for administration purposes and not sold or offered to third parties.

All subscription monies paid to The LINK are non-refundable in the event that the South Warwickshire LINK Ltd. ceases to operate.

EDITORIAL

Link Talk

In this month's issue we celebrate our wonderful village editors! Each village page includes their photograph and a profile so do say hello and thank you if you see them when you are out and about. I am so pleased to be able to include and introduce Cathryn Aitkin who has stepped up and volunteered to take over as the village editor for Barton on the Heath. Barcheston, we are still waiting for you! It seems to be a constant plea, but if you do have a few hours to spare, if you are an aspiring journalist or perhaps need to complete some hours volunteering for a Gold Duke of Edinburgh Award do consider spending some time with us.

Pet of the Month has taken off in a big way, I have been inundated with a positive menagerie of pets hoping to be considered for inclusion, all will be showcased over the next few months so please be patient and do keep sending in your photos.

We are starting to receive information about events planned for the coronation of King Charles III on May 6th. Inspired by an item submitted this month by a resident of Cherington, I thought it might be lovely (for those who were around then) to gather together your recollections of the coronation of Queen Elizabeth II in 1953. So, if you have memories of village street parties, trips to London or other special events and, even better, some photographs you can share, please send them in for inclusion in the May Coronation Special!

Sara Billins Editor

LINK – Online, Subscriptions and Advertising

I am looking for some help from readers please. By the end of 2023, I will no longer be able to manage a number of the tasks that are associated with providing the community with this magazine. I currently manage the Advertising, the Online LINK with its website and the facility for readers to pay their annual subscription by BACS. I am enormously grateful for Sara taking over as editor and for the other members of the team who manage the distribution of the magazine, the finances and of course our village editors. However, I do need to be able to hand these three tasks on. As you will be aware, the financial future, due to the Lottery Grant, is now a lot more secure than it was but without volunteers to take over these three roles, The LINK will need to change in significant ways.

Please contact me (by email below) to discuss how you can help with these tasks and find out more about them. Appeals for volunteers never create a flood of responses, but I just need a few please.

Many thanks.

Keith Murphy, Advertising, Subscriptions and Online –online@swlink.org.uk

Wolfords Women's Institute

Looking for fun and friendship? Come and join us!

What is it all about? Well, it's not all jam and Jerusalem! But then again, we haven't yet posed naked for a calendar, but who knows? And it's not just for the Wolford villages.

We are a group of lively, talented women who, following the WI ethos, support and empower each other. Friendship and teamworking are central to our group.

We meet once a month, on the first Wednesday of the month at 7.30pm at the Wolfords village hall. We have speakers covering a wide range of topics: women in space, drawing in pastels, foraging, starting a business, Furoshiki (the art of wrapping using materials) and murder and mayhem (writing a crime novel).

We also have outings and regular activities such as a book club (every two months), a walking club (monthly) and a supper club (monthly).

If you are interested in coming along to our members' meeting or any of the other activities, or have any questions about Wolfords WI and our activities, please contact:

Gilly (President) on 07812 344 598, gillyhd99@hotmail.com

**Theresa (Secretary) on 07908 792 116,
vwakeham1950@btinternet.com**

theWI
INSPIRING WOMEN



THE LINK

<https://www.swlink.org.uk/>

THE LINK



From Fab Feb to Marvellous March

Lots of great things were on at the hall in February. Everyone that made the Treasure Island pantomime staged by the Shipston Amateur Dramatic Society had a great time; Cotswold Events abboholics was a sell out; The Lions put on the wonderful film "Emily" on their film night; and, at the time of writing, we're doing a roaring trade in tickets for our Tenement Jazz Band booking.

In March, watch out for The Lions film night on the 10th, our Traditional Jazz event with Tom "Spats" Langham's Hot Fingers on the 31st, and squeaking into April, Cotswold Events with their 80's night. "Spats" was sell-out last time we had him and his band at the hall, so don't miss out on a fabulous night of music - tickets are £10, available from www.ticketsource.co.uk/townsend-hall, where you can bag your own table and seating, or from Clarke Electrical Services in town.

In other news, maintenance of the hall continues with the servery and the hallway getting a lovely paint spruce up, and hopefully you caught our "Did you know...?" social media post about the hall – so many different kinds of events we can support with the spaces and facilities we have available. We would love to discuss your event aspirations with you, so please Contact Us: info@townsendhall.com, 07514704057, or fill in the booking enquiry form on our website: www.townsendhall.co.uk. You can also follow us on Facebook to be kept informed of upcoming offers, events, and classes.

Take a look at our website for more and get ahead of the game by checking out what's happening in April. Teaser for you: we think you're really going to want to get tickets in the bag for the event we've got booked in for the 21 April.



Carers4Carers

Friday 24 March 10.30am - 12 noon: Carers4Carers monthly meeting at Kineton Village Hall. Jacqui Smithson, a mixed media artist based in Kenilworth, will give an entertaining demonstration of the fascinating art of wet wool felting so it's something to come along, enjoy and relax. Your loved ones will be able to attend our Companionship Group while you are with us. *Pre-booking for the Companionship Group is essential.* For more information about our self-

help support group, including help with transport to/from meetings, phone Gillian on 07947 893504, email us at kcarers4carers@gmail.com or take a look at www.carers4carersonthefosse.org.uk.

Carers4Carers Lisa Barnett – Assistant Coordinator



Moreton-in-Marsh Country Market

For everything homemade, home grown, home cooked and home crafted.
Every Thursday, 10.00 am to 12.00 pm, WI Hall, New Road, Moreton in Marsh.

Dates for the diary

9th March - we are celebrating National Pie Week with our home cooked and delicious selection of sweet and savoury pies.

23rd March – All Things Marmalade! Alongside our range of marmalades there will be an assortment of baked goods all containing our favourite breakfast ingredient!

07933 141410 / mimcountrymarket@gmail.com or find us on Facebook

A big thank you to all our customers for your continued support.

Pet(s) of the Month

Our March Pets of the Month belong to Meg from Long Compton



Meg (age 11) writes:

My rats' names are Cookies, Cream and Crackers. They are very friendly and like nothing more than being cuddled and curling up together. They are also very energetic and easy to train (they love their agility course). I also need to keep them stimulated, make sure they have food and water, and keep their cage clean.

Do you have a pet you would like to see featured in Pet of the Month? Send a photo and short bio to editor@swlink.org.uk

Time to get walking again!

With Spring on its way, we start to think about getting out to walk in the beautiful English countryside again, but where to find new and interesting walks? Walking in Warwickshire <https://www.walkinginengland.co.uk/warwickshire> has loads of walks to download and print, free, it also has books of walks, details of all the walking groups in the county and much more. Whether you want to walk on your own or with a group all the information is there in one place.

John Harris (who maintains the website) said '*There is so much walking information on the web, but it is difficult to find. Walking in Warwickshire (part of the Walking in England website) has brought it together in one place so whether you are walking from home, or away on holiday, you will be able to find a walk suitable for you.*



With walks from half a mile to twelve miles plus long, and a note of suitability for pushchairs and wheelchairs, everyone can find a walk to enjoy.

So, home or away, check out the websites and get walking!

John Harris www.walkinginengland.co.uk john@walkinginengland.co.uk

Remember – you can opt for the online LINK and stop or retain your printed copy through the door. It's your choice. Annual Subscription for 'online only' is half that for the printed magazine so sign up today and never have to search the house for your paper copy!

Email online@swlink.org.uk for more details

Hooky in Harmony

A local wildlife group loosely based around Hook Norton.



Sunday 2 April

A leisurely *View with a Brew* walk on the Cradle Farm loop. Start and finish on the small green at the bottom of Tite Lane, Park Hill and Down End. Walk is two miles, 10.30 am–1.00pm

Wednesday 24 May

Visit to Graham White's re-wilded garden in Kingham. Graham's 2/3-acre garden, with a variety of different habitats, provides a haven for wildlife of all types. Over thirty species of bird have been recorded and over twenty species have nested there. If you are interested in rewilding your garden, this is an excellent place to visit to give you great ideas. 7.15 pm meet at Kingham (car share available).

Optional visit to The Plough pub afterwards.

We are delighted and honoured to report that Dr. Nigel Collar will be presenting a talk for us in the spring. Nigel has worked in international conservation for 39 years, most of them spent with Birdlife International assessing the status and needs of bird species threatened with extinction. He travels the world giving lectures and is an honorary professor of biology at the University of East Anglia. The talk date will be published shortly – well worth coming.

<https://www.hookyinharmony.co.uk>

The LINK can offer your local business...

Advertising across SW7 Benefice
directly into the community.

Please email adverts@swlink.org.uk

For a suitable commitment, we may be able to offer new advertisers an introductory 'advertorial'.
...and we can put an advert together for you if you need a hand.



SOUTH WARWICKSHIRE LOCAL PLAN ISSUES AND OPTIONS CONSULTATION

Have your say on the future of South Warwickshire



Who?	Stratford-on-Avon and Warwick District Councils are working jointly to create a new Local Plan for South Warwickshire.
What?	A Local Plan sets out the planning policies that the councils will use to assess applications for development as well as identifying (allocating) sites to meet our future development needs for housing and job growth
Where?	Online at www.southwarwickshire.org.uk/swlp/issuesandoptions or in libraries and both Council offices.
When?	Until Monday 6 March 2023.
Why?	We want to hear your views on how South Warwickshire develops up to 2050. The new Local Plan will affect the way we live, work, visit and play in the area, and it's important to have your say!

SOME OF THE TOPICS WE WANT TO HEAR YOUR VIEWS ON

<p>Meeting South Warwickshire's Sustainable Development Needs</p>	<p>Delivering South Warwickshire's Economic Needs</p>	<p>Delivering Homes that meet the needs of all our communities</p>	<p>A Climate Resilient and Net Zero Carbon South Warwickshire</p>
<p>A Well Designed and Beautiful South Warwickshire</p>	<p>A Healthy, Safe and Inclusive South Warwickshire</p>	<p>A Well Connected South Warwickshire</p>	<p>A Biodiverse and Environmentally Resilient South Warwickshire</p>

The Electoral Commission

No ID? You can apply for free voter ID. Find out more at electoralcommission.org.uk/voterID or call 0800 328 0280

New legislation requires electors to show photo ID at polling stations from 4 May 2023.

If you do not have photo ID, apply using the website in the poster or register for a postal vote.

INFO LINK

Contact: **The Editor**
Email: editor@swlink.org.uk

The Post Office van is in the car park by the village shop in Long Compton from 9.30 -11.30 am Monday and Wednesday, and from 12.30 to 2.00 pm Tuesday and Thursday. Shipston 'tip' is open - to book <https://www.warwickshire.gov.uk/recyclingshipston>

DATES AND FETES – 2023

Please send us the dates of all your significant social events.
Please check this list before you plan a new event.

Sat 24 June Long Compton Community Fete
Sat 5 August Cherington, Stourton and Sutton Country Fair and Flower Show.
BH Mon 28 August Whichford and Ascott Flower Show and Fete

Local Catholic Church Services

Chipping Norton

Holy Trinity, London Road. Saturday Vigil 6.00 pm. Sunday 11.00 am Tel: 01608 642703

Stow-on-the-Wold

Our Lady and St. Kenelm, 5 Back Walls. Saturday Vigil 6.00 pm. Sunday 9.15 am Tel: 01608 674354

Shipston and Brailes

Shipston, Our Lady and St. Michael, Darlingscote Road. Sunday 9.15 am.
Brailes, SS Peter and Paul, Friars Lane. Saturday Vigil 5.00 pm (for Shipston and Brailes
Tel: 01608 685259)

Chipping Campden

St Catharine's Lower High St. Sunday masses: – Saturday Vigil 6.00 pm. Sunday 10.30 am Tel: 01386 84026

Local Quaker Meetings

Local Quaker Meetings for worship:

Broad Campden, Quaker Meeting House, GL556US - Sundays at 10.30 am.

Ettington, Quaker Meeting Hse, Old Halford Rd, CV377TH -Sundays at 11.00 am.

Sibford, Quaker Meeting House, Sibford Gower, OX155RX - Sundays at 10.30 am.

Shipston on Stour, in St Edmund's Church - last Thursdays (not Dec) at 2.30 pm

Local Congregational Services

Services recommence at the Ebenezer Chapel, Long Compton from Sunday 20 March 2022 (every third Sunday at 3.30 pm).

PARISH PEOPLE

Parochial Church Councils (PCCs)

Barcheston St Martin

Churchwardens David Hodges 07767 840857
 Secretary Alice & Tom Murray 238755
 Treasurer David Cleave 666002

Burmington St Barnabas & St Nicholas

Churchwardens Sonia Baker 661459
 Michael Macdonald 662483
 Secretary Sonia Baker 661459
 Treasurer Stuart Walsh, 07870 154425

Long Compton St Peter and St Paul

Churchwardens Jill Kirby 684923
 Secretary Zoë Wrigley 650404
 Treasurer John Nye 684363

Wolford St Michael & All Angels

Churchwarden John Wrench 674389
 Treasurer Ann McKenna 674009

Parish Councils Chair

Barcheston David Sutton
 Barton-on-the-Heath James Coker (674601)
 Burmington Robert Hutchings (661496)
 Cherington Philip Townsend (686529)
 Long Compton Simon Bing (684827)
 Whichford Peter O'Kane (684888)

Great Wolford Lynn Mathias (674247)
 Little Wolford Parish Meeting Vacant (currently under Community Governance Review)

Barton-on-the-Heath St Lawrence

Churchwardens Hamish Cathie 674303
 Secretary Gillian Cathie 674303
 Treasurer Mandy McPherson 674734

Cherington St John the Baptist

Churchwarden Roger Maycock 686404
 Secretary Paul Levitch 686353
 Treasurer Rory McLeod 686278

Whichford St Michael

Churchwardens Mandy James 684479
 Sophia Corlett
 Secretary Lucy Simpson
 Treasurer Jenny Scrivener

Clerk

Lindsey Walker (663567)
 Julia Hicks
 Sara Cole (686250)
 Sam Weller (684897)
 Sara Cole (686250)
 clerk.whichfordandascott@hotmail.com
 Sue Finlay (661157)

If you wish to update information on this page, please email the Editor: editor@swlink.org.uk



Happy Birthday! March Birthdays



Isabelle Sophia Jansen van Rensburg	Great Wolford	8
Matthew Baldwin	Stourton	12
Sam Chapman	Whichford	17

SW7 BENEFICE CHURCH NEWS

When reading The Link magazine, you will often see adverts for various events put on by the SW7 group of churches. Usually these involve some kind of food; breakfast or lunch, as well as a speaker talking about an aspect of the Christian faith. We have two events



like this coming up in March (see below for details). Perhaps you wonder, why do events like this? Are they just an excuse to get together and have some nice food? Recently, as a church, we launched our vision for the SW7 Benefice; a short summary of our priorities and the direction we are going in as a group of churches. The headline of that vision is this: *Rediscovering Jesus as our ultimate treasure*. We believe that Jesus is the supreme treasure of life. That to know him is to know life as it was truly meant to be lived. We believe

that Jesus is the most compelling person who ever lived; his love and integrity, his power and gentleness, his wisdom and kindness, are like nothing else the world has ever seen. We believe he is alive today and offers life to all who come to him. We believe he is life's ultimate treasure. That is why we put on the events that we do- to give everyone an opportunity to investigate and discover Jesus for themselves.

We'd love you to join us at one of the events in March – why not come along and see if Jesus really is life's ultimate treasure? The food's not bad either!

Reverend Ben Dyson



SW7 Men's Breakfast

Mike Hill

The Road Not

Travelled

rmaycock287@btinternet.com
tele: 01608 686404
tamjackson52@hotmail.com
Tele:07799057475
epfield98@gmail.com
Tele: 07976700763

The Cherington Arms
18th March 2023 at
7.45am
Includes
Full English Breakfast
Book Now £10.00

SW7 Women's Lunch-time Lent Talk
David Cook
*"Walking in our Wilderness;
 Jesus, our Fellow Traveller"*
Thursday 16th March at 12.30pm
The Old Forge, Stourton House.
 Lunch will be provided
 Please Contact
 Liz Maycock Tele : 01608 686404 lizzymaycock@gmail.com
 Sarah Scotter Tele : 01608 686303 sarah.scotter@hotmail.com

Shipston Deanery



Lent Services 2023

All services begin at 2.30pm



28 Feb	O Lord hear our silence	Long Compton	<i>Reverend Craig Grocock</i>
7 Mar	Praying with icons	Ilmington	<i>Reverend Susan Moberley</i>
14 Mar	Deep Peace Listening Prayer	Shipston	<i>Alison Tomkinson and Ros Wakefield</i>
21 Mar	The Jesus Prayer	Ettington	<i>David Runcorn</i>
28 Mar	<i>No service</i>		
4 April	Praying through music	Whatcote	<i>Reverend Jill Tucker (Holy Week Eucharist)</i>

Each session will be interactive and give us a chance to engage with different types of prayer and will end with refreshments.

SOUTH WARWICKSHIRE CHURCHES – SW 7 - Seven Parishes ~ One Church

MARCH 2023 CHURCH SERVICES						
SW 7	St Martin Barcheston	St Lawrence Barton	St Barnabas & St Nicholas Birmingham	St John the Baptist Cherington	St Peter & St Paul Long Compton	St Michael & All Angels Wolford
5 th March Sunday of Lent	9.00 am BCP Holy Communion (BD)				4.00 pm GAP Service (BD)	10:30 am CW Holy Communion (BD)
12 th March 3 rd Sunday of Lent			9.00 am BCP Holy Communion (BD)		4.00 pm Evensong (BD)	
19 th March Mothering Sunday 4 th Sunday of Lent		9.00 am BCP Holy Communion (BD/MH)	9:30 am CW Mothering Sunday Service (HP)	10:30 am CW Holy Communion (BD/MH)	4.00 pm GAP Service (BD)	10:30 am CW Holy Communion (BD)
26 th March 5 th Sunday of Lent				9.00 am BCP Holy Communion (BD)	10:30 am CW Holy Communion (BD)	10:30 am CW Village Hall Service (Lay Led)

BD = Ben Dyson/LM = Liz Maycock/AW = Anthony Wells/CLW = Clare Wells/HP = Heather Parbury/AD = Andrew Dow/ MH = Bishop Mike Hill
BCP = Prayer Book/CW = Common Worship/GAP = Informal Service

South Warwickshire Benefice

Reverend Ben Dyson Tel: 01608 628229 vicarsw7@gmail.com (off duty Friday)

Benefice Administrator: Mrs. Liz Clarke Tel: 07425868855 Email: officesw7@gmail.com

www.southwarwickshirechurches.co.uk facebook.com/sw7 churches

Acorns Primary School and Brailes C of E Primary School

Starry Night

Children in Nursery and Reception at Acorns Primary School have begun their topic 'Starry Night'. Through key texts, *Whatever Next!* and *Peace at Last*, the children have been finding out about the differences between day and night, thinking about bedtime routines and how we take care of ourselves, such as by having a bath and brushing our teeth, and beginning to think about the sky at night. The children particularly enjoyed a visit from Dental Hygiene Therapist Bethan Hicks. They listened carefully to the information about their teeth and how to care for them and asked thoughtful questions to find out more.



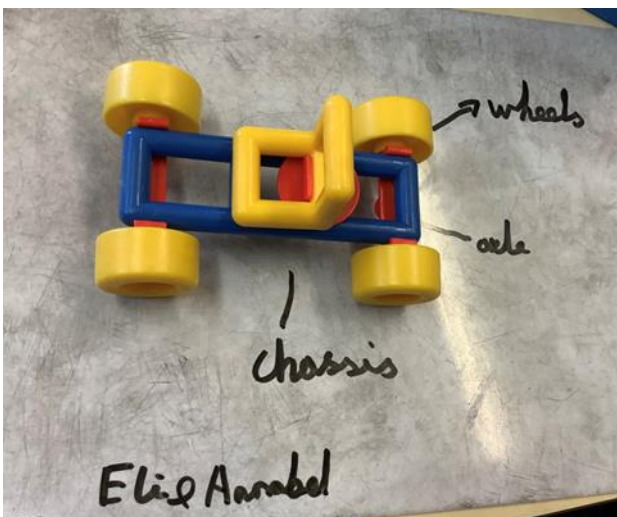
Bright Lights, Big City

Class 1 children at Acorns are thoroughly enjoying the 'Bright Lights, Big City' topic and have been learning about the four countries that make up the UK, their physical features, and their capital cities. Understanding the different types of landmarks in the UK has been interesting and the focus over the last couple of weeks has been on our capital city, London.

In Design & Technology lessons, the children have been finding out about London taxis. They built prototypes out of mobilo. The pupils have been gathering resources, namely milk bottle tops for the model taxi they will be building later this term.

Misty Mountain, Winding River

'Misty Mountain, Winding River' is in full flow at Acorns. The children started the term by learning all about rivers in geography. They've found out about all aspects of a river's journey, from the source to the mouth, as well as finding out about some of the most significant rivers in the world.



Pupils used atlases and online maps to help find out where these important rivers are and tried to work out what the different rivers may be used for, linking to a sequence of lessons about the six main uses of rivers. Children have also recently started to learn about mountains, finding out how tall hills have to be before they are considered a mountain, which mountain range the tallest mountain in the world is located in, and how different types of mountains are formed.



Mrs Thomas has done some fantastic work with the children in the Acorns Forest School. The children have shared their learning of mountains, rivers, solids, liquids and gases during their forest school sessions, and have created some interesting artwork linked to their geography and science topic. Thanks to the cold weather we had at the start of the month, they also managed to make some wonderful ice art which was displayed in the science garden.

Eat the Seasons

To kick start this term's Design and Technology project '*Eat The Seasons*', Class 3 at Acorns sampled different seasonal fruits and vegetables, critiquing their taste, texture and appearance. Many of them tried entirely new foods and even discovered that some were tastier than they thought! Over the next few weeks, the children will be planning a seasonal soup recipe; practising key preparation techniques (such as dicing and sauteing) and sampling their final creations to evaluate their success.

A trip to Long Compton allotments provided an excellent start to our new topic '*Sow, Grow and Farm*', and it was so lovely to hear all about Claire Hicks' allotment life, and have the opportunity to explore the great outdoors right on our doorstep. Children created detailed allotment plans and then used some of the information in their non-chronological reports, which were fantastic.

Long Ago

Squirrels class at Brailes School have embarked on studying the topic '*Long Ago*'. The children have been looking at toys in the past and comparing them to toys that children enjoy playing with now. They found many toys to be similar but not always made from the same types of material. Children have also enjoyed looking at baby photos of each other and seeing if they could identify classmates. The children came up with a range of questions for the mother of a new born baby to help their understanding of how caring for a baby is different.

We were pleased to welcome Robina Bennett to talk to us about how schooling in Brailes has changed. She attended Brailes School as a child and began her schooling in the Old School House on School Lane which is now a residential property. The children were interested to ask her questions and to look at photos of how things have changed, including the more recent changes at the school in the creation of the extended Squirrels classroom.





Coastlines

Mrs. Roberts has been helping children build lighthouses to accompany the 'Coastline' topic, where children have been exploring coastal towns and their features. Pupils wrote some terrific reports in English lessons and became very knowledgeable about the role of lighthouse keepers. The next writing process is to write a diary from the perspective of Grace Darling, the courageous heroine who saved terror-stricken survivors from a terrible storm near the Farne Islands.

THE STOUR FEDERATION MULTI ACADEMY TRUST

The Stour Federation Multi Academy Trust consists of Acorns Primary School, Brailes C of E Primary School, Kinton C of E Primary School, and Shipston-on-Stour Primary School. Our Trust website is www.thestourfederation.com

Christian Hilton: Executive Headteacher CEO of The Stour Federation
Hannah Young: Head of School



Bovine TB reaches Great Wolford

After 40 years with clear TB tests on this farm it was a real shock when four (20% of our small herd) tested positive for bovine TB (bTB) at the last annual test. Having written about the problems a positive test creates many times we are now experiencing this ourselves. Cattle are only a small enterprise on this farm, we have 30 acres of permanent pasture grass with an ancient monument that we can do little else with other than graze, we also like having animals around (most of the time) but even on this small scale it was a real shock and surprise when the vets pronounced. On a farm where either dairying or beef cattle are the main enterprise it can spell real mental and financial trouble. The cattle reactors were immediately isolated and removed by a licensed haulier as quickly as possible, the test was read the day before Christmas Eve so they were not collected for four or five days and went for immediate slaughter and post mortems. The 3 younger animals, 8 months old, all showed typical lesions on the lungs indicative of TB and the one full grown animal inconclusive. We received compensation which was reasonable but beef cattle are not of great value until they are close to being ready for the butcher. The main problem with losing the younger animals is that we lose continuity of supply and will have less stock to sell next winter.

We are now in lockdown which means that we cannot move cattle onto or off the farm until we have had two clear TB tests 60 days apart. Currently we have no animals ready to go, should we still not be clear by the time we need to sell the older cattle, probably in about 10 months time we could possibly sell them through an 'Orange' market which is restricted to cattle which have a clear TB test but come from a restricted herd and will go directly to slaughter. We may possibly be able to get a licence to buy calves but I think this is something we are unlikely to do until we are totally free of the disease which can take some time as the reactors were all running with other animals of similar age who may now be infected.

DEFRA and the Animal and Plant Health Agency (APHA) have just announced that they will be starting Phase Two of vaccination trials for bTB. They will be testing a new skin test which it is hoped can differentiate between an animal infected with bTB and one vaccinated with the BCG vaccine. The BCG vaccine has been tested in several other countries and is between 60 and 85% effective in preventing the disease. The new skin test must be able to differentiate between an animal that has been vaccinated and one that has the disease, it also needs to be able to tell whether a vaccinated animal has caught the disease. It is hoped these trials will be complete by the end of 2023.

Lynn Mathias farms in Great Wolford

NATURE NOTES

Editor: **Tony Partridge**
Tel: **684698**

In spring the young man's fancy turns to thoughts of love or so thought the poet. Now far from being a young man, I really can't tell you whether such are the directions of young men's thoughts today. So let us dwell on other thoughts as we finally watch the days grow longer and (spasmodically) warmer.

Walk along the lanes and you will be delighted by the sudden emergence of leaves on the hawthorn bushes. How lucky we are to have so many miles of hedgerows. Our ancestors of 250 years ago had few such hedges to admire, their fields being almost hedge-less with crops growing in strips between the hedges. The advent of many new varieties of crops together with the need to rotate crops saw a change in agriculture (known as the agricultural revolution) which took place in the late 18th century and changed a system which had persisted since Saxon times until the early 19th century so, forming the basis of farming we follow today.

But I digress. To spring! The hawthorn is of course the main plant of the hedgerows but by no means the only one. Alongside it you will see elder bushes, also with their spring displays. I once regularly made elder flower wine in the late spring which I drank a couple of glasses of each day with my evening meal. The blackthorn will also often appear, the flowers coming before the leaves. Jam was once made of this and also, I am told, sloe gin although it is not a berry to taste with any pleasure. Crab apple trees are quite numerous in hedges too and will display their fruit in plants frequently intermingling with other native species.

What we also look out for in spring is the birds' nesting. Some nests such as those of rook and crows are already formed, having been used the previous winter, and requiring only a bit of patching up before being reoccupied. Others of course need to be newly formed, their occupants having only recently arrived in the area where they wish to nest. Competition for nesting space is fierce and requires full knowledge of the area and the plants whose leaves and parts are required for forming nests. One aspect of birds' nesting I have always found most curious is why some birds nest on the ground, others nest in trees and bushes, and how do they get away with it! After all, the predators lurking thereabouts must think this is a gift – and yet it works, a mystery indeed!

I read the other day the legend of how the blackbird became black. A magpie arranged for the blackbird to meet the Prince of Riches, previously warning the blackbird not to touch anything in the Prince of Riches' domain. But the blackbird was unable to resist nipping its beak into the mass of gold to be found therein. In doing so the Black Smoke Devil appeared and drove the blackbird out. In the encounter, the bird until then having been white, became black. His beak, however, remained yellow from the gold. So, there you are, that is how a blackbird has become black!

Tony Partridge

GARDENING NOTES

Editors:

Margaret Welsh, Long Compton Garden Club

Miranda Arnold, Whichford Amateur Gardener

As I write this, the sky is blue, the birds are chatting to each other, and the air has a hint of spring in it. It feels like the kind of weather to get on with the gardening work I enjoy most: sowing seeds; but, I have to hold myself back, because even though it feels springlike, the soil in March has not had a real chance to warm up yet, so if you sow many seeds outdoors, you're likely to be disappointed with your germination rates. In addition, we are by no means safe from frost, which is a risk all the way through to the middle of April.



However, if you have a cold frame or a greenhouse (heated or not), you can start seeds off under cover or even on a sunny windowsill, to get them germinated before planting out next month. Try sowing sweet peas under cover or indoors, in as deep a pot as you can get hold of, for the plants to develop a strong and long root system. You can sow a tray of lettuce, ready for planting out at the end of this month. Tomatoes, cucumbers, and aubergines can all be sown now, and kept growing under cover until all danger of frost has passed. Similarly, you can plant summer bedding plants now, again indoors, to plant out in April.

There's an awful lot to get on with and more time to do it with the longer days and hopefully a bit more sunshine. There are things to cut back before the new growth takes over - herbaceous perennials could do with an all-over shearing to cut off the dead leaves and last year's flower stems. Cut the leaves off your hellebores, and deadhead any spent garden bulbs, leaving the foliage to die down naturally. Plant out summer bulbs such as alliums, gladioli, and freesias, but make sure your soil is well-prepared to ensure good drainage, so the bulbs don't rot in the ground.

You'll notice weeds, both perennial and annual, starting to spring up. Weed them out as soon as you spot them, and then when the soil has warmed up at the end of the month, give your beds a good mulch of organic matter to act as a weed suppressant. Feed the borders before you mulch to get the plants off to a good start.

Prune the shrubs that you grow for their winter stems. Shrubs like cornus and salix can be pruned hard, down to about three inches, so you get new colourful growth for next winter. Climbers will be starting to throw out new shoots; keep on top of these by tying in that new growth when it's long enough.



Keep an eye on containers too, making sure that they are not drying out. This particularly applies to any containers near the house, where they may be under your eaves and therefore not getting any rain.

Prepare your vegetable beds, by weeding and mulching them. You could dig in the organic matter you use as a mulch, but I'm a big advocate of the lazier "no dig" method, where the worms do the digging for you. This will mean that your beds are ready to receive the potatoes that you are no doubt chitting in a

cool light space indoors. Work out your crop rotation, if you haven't already done so, so that each crop has a fresh bed to grow in, and you don't risk insect or disease damage.

Finally, keep on feeding the birds. If the weather turns exceptionally cold or wet or even dry, their natural sources of food won't be available, and they'll need a top-up from your bird feeders. This is particularly important as they start mating and breeding.

Miranda Arnold

A Recipe for Elderflower Cordial

Expensive to buy, easy to make.

1. Pick 20 large heads of elderflower on a dry, sunny morning. Shake to remove any insects and cut off the stems but do not wash.
2. Dissolve 1kg sugar in a large saucepan with 1litre of water on a low heat.
3. Add the juice and zest of 2 lemons.
4. Add the elderflower heads, cover, and leave to steep overnight, stirring occasionally.
5. Sieve the liquid or pass through a piece of muslin and bottle.
6. Dilute with water or fizz!



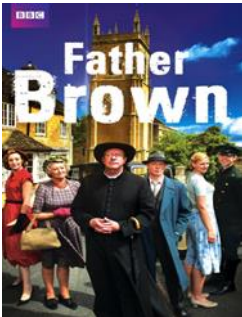
VILLAGE NEWS

BARTON-ON-THE-HEATH
Email: barton@swlink.org.uk

Introducing your new village editor: Cathryn Aitken



I am delighted to take on the role of editor for Barton on the Heath. My husband, along with our dog, moved back to Barton at the end of last year from Little Compton. We have previously lived in Barton on the Heath and feel like it is coming home to be back there. Together, Alistair and I run a civil engineering consultancy business based in Chipping Norton which keeps us busy, but I love nothing more than a long walk with the dog in the beautiful countryside that is on our doorstep. I really look forward to getting involved in village life and thank you in advance for all the news and notices of events that can be included in The Link!



Last summer the BBC descended on Barton House and the village. You can now see the result on BBC iplayer - 'Father Brown' series 10 episode 3. The plot is hardly troubling, but I have to say, the setting is splendid!

Do have a look.

VILLAGE NEWS

BARCHESTON WITH WILLINGTON

Editor: Please email – barcheston@swlink.org.uk

New Village Editor Required



Please be aware we still need a new village editor for Barcheston. Please consider volunteering. In the meantime, your items should be sent to barcheston@swlink.org.uk and I will pick them up and edit the page.

VILLAGE NEWS

BURMINGTON

Editor: [Graham French](#)

Email: burmington@swlink.org.uk

Your Village Editor: Graham French



My wife Sandie and I moved to Burmington in 2014 having lived for 35 years in South London. Quite a change! It took us a little while to remember that there are no streetlamps in Burmington and to take a torch when going down our village street at night.

I carried on working part time working from home and travelling to London a couple of days a week working in my sales and business development consultancy.

About three years ago I was persuaded to take on the vacant job of Link village editor. It's been fun to do. We are very lucky in Burmington to have some great regular contributors and activities so that, considering we are a small village of about 100 souls, I feel that we are frequently able to punch

above our weight in terms of the content we provide for the Link.

BARCHESTON with WILLINGTON Parish AGM

ADVANCE NOTICE

As agreed at our last parish meeting in October the Annual General Meeting for Barcheston and Willington will be held on:

Thursday 13 April at 7.45pm in the village hall at Burmington.

This is an opportunity for you to keep in touch with village and district affairs, to raise any concerns you may have and to become part of the general discussion.

Points to be discussed will include matters arising at the last meeting, an update from your local councillors and village plans to celebrate the coronation of King Charles

Please come and give your support. We look forward to seeing you all.

George Aston: 8 March 1936 – 18 January 2023

An Appreciation

Burmington and Willington lost their longest inhabitant with the death of George Aston in January at the age of 86. Apart from a couple of years in the army, George spent the whole of his life in our villages, and over 60 years in the same house in Burmington. This account of his life is offered with condolences to George's wife, Beryl, and their family. Villagers, some having known George from his childhood onwards, have expressed their sense of loss at his passing, remembering him as a widely popular local figure, sociable, modest, personable, smart, warm-hearted, and hard-working and possessing a dry and infectious sense of humour.



George was born in Willington in 1936, into a family with 9 children. He attended Burmington school (Burmington village hall today) from the age of 5, walking across the fields each day from his Willington home. He was by all accounts a venturesome, daring youngster, remembered by fellow pupils for escaping immediate punishment for mischief with a quick departure via the classroom window and racing home. He is also remembered for his exploits as a masterful scrumper of fruit and nuts. Scrumping is described in the OED as raiding orchards, but for an enterprising youngster such as George the scrumping season might extend from early strawberries to late walnuts. His relatives tell of a time when George tore his trousers on one such adventure and of his overburdened mother stitching an on-the-

job repair with George bent over her knee. Another account tells of George being accosted crawling through a hedge by the orchard's irate owner who demanded to know where George was going. "Back", replied George as he made a hurried retreat. When asked if he joined other children in swimming in the village pond, George admitted to fishing and skating there but that the only time he swam in the pond was when he fell through the ice. On leaving school, aged 14, George worked on local farms until conscripted into the Army at the age of 18 for two years National Service with the Tank Corps. A grateful nation paid conscript George 28 shillings (£1.40) per week and quickly packed him off to Malaysia, then a British colony which was engaged in a brutal communist uprising in which over 500 British soldiers, including many conscripts such as George, lost their lives. We are afforded another glimpse of Private George Aston's character in that he was offered promotion while engaged in action in Malaya.

He declined, perhaps because he became engaged to Beryl before joining the army and his mind was focused more on his earliest return to the UK. Beryl and George were married in Barcheston Church in 1956, eventually making their home in Burmington in the house opposite his old school. They shortly moved to a house in The Lane, Burmington, which was to be their home for the rest of George's life. They have two children, Belinda and Stephen and two grandchildren, Kim and David.

George was a true countryman at heart, continuing to work on local farms for the remainder of his working life. His main relaxation was in fishing, but other interests included raising a rescued fox as a pet and making and flying aircraft models in the company of his nephew, Robert.

George in Malaya

He bore his final illness with characteristic fortitude, continuing to the end to attend and enjoy village social functions – including village breakfasts in the village hall - and using his electric buggy for regular trips to Willington and other lifetime haunts. It is pure fancy to imagine that those who follow him to the Pearly Gates and enquire of George Aston, might observe a warm glow in St. Peter's eyes as he directs them to a place at the heavenly table, high above the salt, where George can be seen in exalted company enjoying a full English breakfast; but, it was not fancy on the part of one of his old friends when he deftly characterized local affection and respect for George with: "*He was an Englishman*".



As told to Dennis Cummings by Burmington and Willington villagers.

George Aston's Funeral

George's funeral was held at Oakley Wood Crematorium on 14 February. A large number of people attended. George's coffin was draped in the Union Flag befitting an ex-soldier and proud patriot.

The service was sympathetically conducted by a civil celebrant whose tribute to George included many reminiscences of George's life; a time for reflection allowed the congregation to reflect on their own memories of George.

Following the service everyone was invited to join the family to share refreshments and more memories of George.

All in all, a very fitting send off for a very sociable and popular long-time villager who will be hugely missed!

House of Bread Update New Team Member, Volunteers and Otters...

In recent months, a new member of the team is also now living on site with his family.

John Clifford is Assistant warden, working alongside Will and Ann, welcoming guests and managing some of the operations of the centre. John has become a valuable member of the team, as are all those who work and volunteer at the centre.



The gardens are cared for by an amazing team of volunteers, and there is vision to develop and enrich the spaces where guests can take time to rest. We also have volunteers who help out with maintenance and hospitality.

The House of Bread is a Christian retreat and conference centre in Burmington that offers space for groups to meet, as well as individual guests to have time on retreat – taking time out from the

busyness of life, draw close to God and rest in quietness and stillness. Guests can make use of the comfortable lounges and enjoy the gardens and grounds.

It is always a joy to spot the kingfishers by the river that runs through the grounds, and very recently a couple of otters!

Guests are welcome to tuck themselves away, or they can join in with events hosted by the House of Bread team. Regular events include; guided retreat days, weekly Holy Communion, prayer/reflection times, and also annually there is the Christmas meditation evening.



Coming up on 6 April at 7.30pm - our **Easter meditation**. All are warmly invited to come along to the Barn at The House of Bread for a time of reflection and stillness in the lead up to Easter, with candle light, music, scripture and reflections.

Do call in to The House of Bread if you would like to find out more, have a look around the centre, or come along to an event. A warm welcome awaits you.

The House of Bread is overseen by Will and Ann Neale, who live on site with their family.
Ann Neale

E-Bikes – Magic and Myths

I was honoured to have the Link Editor for Birmingham pop into Shipston Spokes bike shop the other day on what I thought was a social visit. He, however, was looking for information about these mystical E-Bikes.....

"You don't get much exercise on these electric things, do you?" he asked. *"Oh yes you do!"* I exclaimed, and explained...

They are not magic. Older versions of E-Bikes commonly had a twist throttle on them – twist and off you went, pedalling being an optional activity. However, under law these subsequently became classified as *'powered'* vehicles which would require the appropriate motor licence to operate. E-Bikes are now required to be *'pedal assisted'* to comply in the UK.



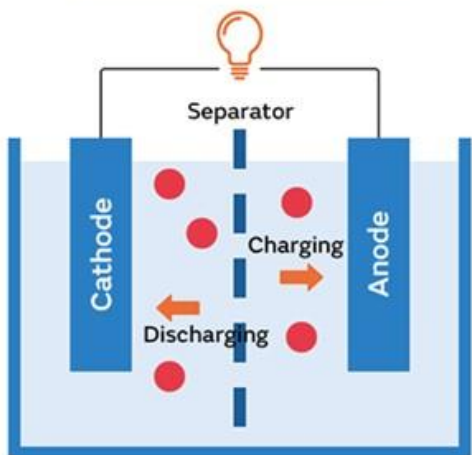
Pedal assisted E-Bikes have sensors that sense when you start pedalling the bike to know when to start providing assistance. Depending on the type of motor, it will do this in slightly different ways. A *'mid-drive'* motor is positioned between the pedal cranks and has sensors (3 or so) inside which are sensing resistance to your pedalling cadence. Depending on the level or mode of assist you have the bike set to, the motor will then intelligently apply torque over your pedalling to help you maintain your cadence. So as you pedal comfortably along a flat bit of road your pedalling cadence will be nice and constant; slowing as you come to a hill, the motor will sense the resistance in your pedalling and will compensate, applying power. You then continue to pedal at the same effort you were on the flat with the motor changing how much power it provides as the resistance changes. As you comfortably reach the top of the hill the motor power will drop away as you continue pedalling as you were at the bottom of the hill. The only difference being you are still smiling, taking in your wonderful surroundings and not huffing and puffing as you walk your bike up the last part of the hill.

The other type of motor is a hub-based motor. These sit in the rear wheel (you may rarely find one in the front wheel or see these in 'conversion kits), with sensors placed by the crank. In a similar way, sensing a change in your pedalling a signal is sent to fire up the motor in the wheel to provide additional drive (albeit separate to your pedalling and often less smoothly / intelligently depending on the quality of the E-Bike system used).

"And what about them blowing up everywhere and catching fire" he asked. *"Well,"* I said, *"there are plenty myths about their propensity to spontaneously combust, but in reality, it is a rare event"*. E-Bikes use lithium-ion batteries which are the same technology we have in most of our rechargeable devices in the home.

A battery is an energy source based on heat – when you charge it, the lithium ions move through the electrolyte to the negative anode with the electrons doing the opposite. As you use the battery (discharging its power) the cells move back again. As illustrated, lithium-ion batteries include a 'separator' preventing the electrodes of the battery's cells from touching each other. If this separator fails within the battery the electrodes can touch, causing a huge build-up of heat. If this build-up of heat produces a spark, the highly flammable electrolyte can catch on fire. Should the battery temperature exceed 150 degrees Celsius, it becomes highly unstable and 'thermal runaway' can occur where the battery self-accelerates to extreme heat (900

Lithium-ion battery



degrees or so).

The insider's tip is to avoid cheap rechargeable things.

"Well," said my visitor, *"I wish I hadn't asked"*. And he left to go on his way without even buying an inner tube.

Speaking of which we also discussed the best way of avoiding hawthorn punctures which tend to spoil a cycling outing. There are clever but inexpensive ways to puncture proof your wheels so pop in to find out more!

Stuart Walsh

Burmington resident, Stuart is the owner of Shipston Spokes and Treasurer of Burmington Parochial Church Council.



**Burmington Village
Coronation Gathering**



Saturday 6 May 3.00pm onwards

**Come and join in some family fun
on Michael's Field**

Watch this space for news of a water-based activity for all !!

**Breakfast is being served at
Burmington Village Hall**



on

Saturday 4 March 10.00 am to 12 noon

It would be helpful to know numbers before the date: please contact Robyn on 07966 849149 if you would like to come along. Thank you and we look forward to seeing you.



**KATHARINE
HOUSE
HOSPICE**

Katharine House Hospice has requested that blister packs should not be left in the recycle bin. They have no recycle value.

Please do keep on recycling aluminium foil and batteries. These do raise much needed funds for the Hospice.

Thank you

Julia Anne Sykes

Your village editor Christine Dudfield



I'm married to Mark and have lived in the village since I was born.

I've been the village editor for over a year now and I really enjoy doing the job.

It's very easy to do and it's a good feeling knowing that I'm playing just a small part in helping keep The Link going.

Brailles Picturehouse

Saturday 11 March - *The Railway Children Return*

Doors open 7.15pm. Film starts at 7.45pm

38 years after the original film took place, we return to find Bobby is now the retired headmistress of the local high school. As the WWII evacuation of children from the cities begins. Bobby is called upon to set up an emergency school for evacuees.

Jenny Agutter (*Call the Midwife*) reprises her role of Bobby from 1970 film alongside Sheridan Smith and Tom Courtney, in the sequel to one of the most cherished British stories of all time.

Future dates and listing

Saturday 15 April - *Where the Crawdads Sing*

Saturday 20 May - *Richard III. The Lost king*

Saturday 17 June - *Mrs. Harris goes to Paris*

Deirdre and Team



I am pleased to welcome three new trustees to The Hall management team, Piers Marshall, James Ind, and David Marriott. We now have over fifty new Hall Social Members, and it was good to have support from some at the recent AGM. Anyone wishing to become a member can simply register on The Hall website at www.thehallevents.org.uk

The recent consultation regarding the development of an aspirational plan for both the playing field and the land on which The Hall sits, brought forward some useful ideas. The consensus being that the two sites should be developed as one, even if the ownership, management and uses of each remain with the underlying charitable aims remaining undisturbed. A small working group will be developing this plan to bring forward for later approval.

The Hall continues to be well used, but there is always room for more. We have secured a small grant which allows us to offer free drinks at the Saturday Socials during the remainder of the winter, I hope to see you there.

Lastly, whilst The Hall funds are in good shape it is the intention of the trustees to maintain the building, facilities, and equipment in pristine order so that The Hall continues to offer an exceptional space for community events, parties, social clubs and activities. We have a programme of improvements to deliver to the site including a planned extension to the car park, so funding will always be a priority. We now have a 'Just Giving' account which provides for Charitable Gift Aid and can be accessed by clicking on the 'Donate' button on the home page of the website. Anyone wishing to join The Hall Lottery, where the top prize each month is £80, please email steveallkins53@gmail.com.

Jim Walton – Hall Trust Chairman.

Lilies for Easter

As usual I am writing to see who might like to make a donation towards the purchase of lilies for Easter. I will place a list in the back of the church later this month, but in the meantime, if you wish to phone me with a donation, please feel free to do so.

The Flower Group always create a wonderful display of local daffodils/narcissi. The addition of a large arrangement of lilies is a beautiful focal point in the church.



Sarah Scotter 01608 686303

Amazing Musical Extravaganza - 15 April

The box office is now open. Please email dawn.amazingmusic@gmail.com to reserve your tickets, which cost £8.50 each.

As a showcase for local talent, we have some great acts already booked. The Acafellas are a barbershop quartet, you can watch them on YouTube @theacafellas2274.

Rosie and Ben are a couple with connections in Whichford comprising a singer and a keyboard player.

We are delighted to welcome Sam Conisbee who cut his teeth at last year's Shipston Proms and has recently featured playing with the Jozobozos in Brailes; a guitarist to look out for, he's only 10 years old.

The Cherri Jammers will provide a selection of highlights from the various line ups playing in the Cherington Arms most Wednesday evenings.

The Porter family need little introduction, and we are looking forward to hearing Imogen Warriner and her friends.

Apologies in advance for the return of the Gentleman's Kazoo Orchestra; also, who knew that Piers Marshall played the piano?

If there are any budding musicians or dancers who would like to take to the stage, please contact me. There will be a pay bar and a party atmosphere, book early.

Jim Walton 07860 727467



Village Lottery

February Draw

1st Annie Parmenter £80

2nd Liz Harwood £45

3rd Sue Rodger £30

Congratulations to our winners and thank you for your continued support. For more information on joining, please contact me 686293 or steveallkins53@gmail.com

Steve Allkins



Well done Jim and Eric for doing your bit for the countryside by picking up the litter etc.
Christine

Feel Good Friday Social Afternoons

It was a lovely surprise to have Warwickshire Fire and Rescue Service visit our Feel Good Friday on 3 February.

They gave lots of advice and booked in a number of residents for their free Safe and Well Check.

If you'd like to book a Safe and Well Check, then please call them on 01926 466282 to arrange.

Dates for your diary, 3 and 17 March from 2.00pm at The Hall, Pinfold Lane, Stourton, CV36 5HG and don't forget we have an Easter Prize Bingo on Thursday 30 March, eyes down at 2.00pm.

For more information, please contact me on 01608 663320.



Vanessa Compton

Coffee Shop - Saturday 11 March



10.30 am - 12 noon.

At The Hall, Stourton - CV36 5HG

This month we will be having a Bring and Buy in aid of the Playing Field Funds so please come along and support us

We are always open to new ideas: would you like something different on the menu? Would you like to help out occasionally? Would you like a craft stall?

Please contact us at christinedudfield53@gmail.com or Christine on 07866 127409 or Tricia on 07828 697304



Lady in Red Hat: Watercolour by Colin Beckett.

Long Compton Village Hall

We could not be more thrilled! We had well over 50 folk at the Social Saturday in February as well as a couple of friendly chaps from Warwickshire Fire Service who popped along with their fire engine. I must stress, they were there in an information giving capacity, not in answer to an emergency call! Thank you to EVERYONE who joined us, it proves this monthly event is valued by our community and brings folks together which is exactly what it was set up to do.



Other events at the hall recently have included a series of jewellery and tree workshops; regular Atomic Dance and Pilates classes; needlework and bridge sessions and a whole host of private parties! It's great to see the building being used so much and for such a variety of events.



Talking of which, we've had lots of interest in our 70s disco on 25 March but there's still time to dust off your glad rags, practise those moves and shimmy on down for a boogie. You can pay on the door but we would appreciate knowing that you're coming in advance so we can get the Frazzles and Hula Hoops in!

If you've been in the hall recently you will

hopefully have noticed it's bright, fresh appearance and new hue to the front door! Phase 2 of our decorating schedule was quite an undertaking for BDG Decorating Services who managed to fit in the preparation, painting, and drying time around events so no one was inconvenienced too much. That in itself was no mean feat! On behalf of the Committee, thank you for your support and please do continue to make the most of this - YOUR -community space.



**SING AND DANCE THE NIGHT AWAY!
AT LONG COMPTON VILLAGE HALL
SATURDAY 25th MARCH AT 7.30PM**

**The best music and
dance tracks from 70s
DJ Keith Lane
Bar
70s disco wear or come
as you are!**

70s DISCO

**TICKETS £5 IN ADVANCE CONTACT
MO READ 07814 802814**

Mo Read Chair, Long Compton Village Hall

Long Compton Chapel

It has been a relatively quiet time for the chapel; however, we have been planning events for the year as listed below. In particular, we are pleased to add a musical event on 30 June as part of the Shipston Proms Season. If you would like to run an event or have an idea for one, please do let us know.

On a practical front a grant application has now been submitted for essential and comprehensive repairs to the chapel including a more economical and efficient heating system, a new toilet block, etc. Please either pray for a good result for us or keep your fingers crossed!

Services remain on the third Sunday of the month at 3.30pm. We will be joining the parish church for Easter services.

Also, the windows have been refreshed and are now full of spring flowers as we welcome a change in season.

It is pleasing to note that every time we are present at the chapel someone invariably comes to look at books, enquires about the history of the chapel and are always pleased to learn that it's still active; having a busy programme of future events definitely gives plenty of scope for attendance to support.

Chapel Events 2023

Easter Monday 10 April	Art and Craft Exhibition	11.00am – 4.00pm
Saturday 1 April	Whist	7.00pm
Saturday 29 April	Whist	7.00pm
Sunday 7 May	Craft Market	2.00pm-4.00pm
May (tbd)	Shipston Home Nursing Plant Sale	
Saturday 24	June Village Fete -Chapel running car boot sale and flower arranging competition.	
Friday 30 June	Shipston Proms Event	
Saturday 29 July	Craft and Produce Show	
Saturday 23 September	Macmillan Event	

Please note that the aluminium can and foil (now in separate container) collection for Katharine House Hospice is now located against the wall on the left as you enter the car park as the birds had rather blessed the containers when under the trees! Batteries are no longer being collected.

Elizabeth Gilkes 07791 621778 or Sally Franklin 07870 545431
longcomptonebenezerchapel@outlook.com



Join us for Community Coffee

at

St Peter and St Paul's Church, Long Compton

on

MARCH 1 from 10.30am to 12.00
and the 1st Wednesday of every month

All are very welcome,
Young, Old, Families, Dog Walkers and Newcomers to the Village.

Aunt Phoebe's Recreation Ground, a designated Dark Sky Discovery Site

On a clear night, it's hard to miss the beautiful starry skies above Long Compton. However, some newer residents may not be aware that Aunt Phoebe's Recreation Ground is a Dark Skies Discovery Site. This means that it has 'Milky Way' status, meaning that the Milky Way can be seen there with the naked eye. As such, the site is often used for excursions by the Chipping Norton Astronomy Society. The wonderful photograph on the front cover of The Link this month was taken by Gary Smith an amateur astronomer who recently visited the site. He writes:

I have visited the ground twice over the last 3 weeks after seeing it advertised as a dark sky spot. good for amateur astronomy and astrophotography.


It's amazing! Not only is it dark and quiet, but it also has seating and a covered area to keep equipment protected from the evening air frost and wet.

The image in the photograph of the Flame and Orion nebula are around 1.5 thousand light years away from Earth, in the constellation Orion. They were taken without a telescope, simply a DSLR attached to a tripod and star tracking device.

The Parish Council is rightly proud and protective of the Dark Skies status of the village; next time we have a clear night, pop over to the rec and find out why!

Sara Billins

Long Compton and District Garden Club



Long Compton and District Garden Club

2023 Meetings

Long Compton Village Hall - 7.30pm

Wednesday 22 March Robert Longstaff "Propagation" - how and when to take cuttings, the different types of cuttings, plant division, seed saving, sowing methods and composts. Trained by MAFF in the 1970s, Robert speaks on the BBC and TV and has practiced 'no dig' gardening since 1981.

Wednesday 26 April Rosalind Sword of Chivel Farm, near Chipping Norton. "Plants for local soils". Rosalind brings a deep knowledge of how and what to grow in the soils around LC. She will introduce us to some of her favourite plants.

Contact Lesley Roberts 01608 684545 or lesleyroberts46@gmail.com or Anthony Wells 01608 684337

The Comptonians

We will meet at 2.00pm in the Village Hall on 15 March when we shall have a talk on; "*The 1921 Census for Long Compton*".

Tea and cake will also be served.

All Welcome.

Margaret Welsh. 684238

Long Compton Walkers

The unseasonably good weather attracted a dozen walkers to Clifford Chambers for the February walk. It was only some distance in when all realised we had done the walk last year albeit starting from Preston on Stour.

Nonetheless, we all thoroughly enjoyed it specially as it was mud-free and boasted only one modest uphill section and but one stile. The four miles was achieved in good time (including a stop to admire the Preston church) allowing most of us to arrive for a simple lunch at the New Inn -much to be recommended.

Our next venture will be on Tuesday 14 March. New recruits are always welcome. Please contact Stuart Brown on 01608 684042 or scbqc1@gmail.com

Stuart Brown

Long Compton
book club

Our next meeting is on Thursday 9 March at 7.00 pm.

We will be discussing '*The Dry*' by Jane Harper and '*The Sealwoman's Giff*' by Sally Magnusson

All Welcome

Contact: Carole Clements 01608 684938 carole.r.clements@goolemail.com

Compton District History Society

The society returns from its winter break on Wednesday 8 March with a talk from Gareth Winrow about "*Elizabeth Wisdom, The Chipping Norton Murderess*".

As usual we meet at 7.30pm in Long Compton village hall. We hope to see a good audience for this local true crime story.

Diana Cook 01608 684771

Long Compton Garden Club visit to Chastleton

Having visited the house and garden at Chastleton last summer we were told about their snowdrop collection and so arranged to make a return visit to see them this February. The sun shone on us, and it is like stepping back in time when you enter the impressive gates and walk towards the imposing old house. There were snowdrops in the borders on either side and they were joined by Crocus tommasinianus which had



opened in the sunshine, bejewelling the area where they were.

We were welcomed and then walked towards the wilderness where most of the snowdrops are. On the way there we encountered a glorious patch of crocus where bees were buzzing around busily pollinating them. Further on we found snowdrops on either side of the path, plus a few pink Cyclamen coum and some snowflakes (*Leucojum vernum*). It is a beautiful setting and so peaceful, an enjoyable visit.

Celia Sawyer



THE RED LION QUIZ NIGHTS

SUNDAY 5TH MARCH 7.30PM • *The Stroke Association*

JOIN US FOR THE LAST CHARITY QUIZ OF THE 2022-23 SEASON

Friends of Long Compton Church 2023 Event Schedule



Tickets available soon. For enquiries, please contact
fccsec@gmail.com.

www.friendsoflongcomptonchurch.com

Village Organisations

Long Compton and District Garden Club - Contact Anthony Wells 684337 or Lesley Roberts 684545

Compton and District History Society - Contact Diana Cook 684771

Comptonians - Contact Margaret Welsh 684238

Village Hall - Mo Read on 684130, 07814 802814 or lvillagehall@yahoo.co.uk

Compton Creatives - caroline.nixon@btinternet.com or jhburras@yahoo.co.uk

Long Compton & District Walkers - Stuart and Imogen Brown. 684042

Long Compton Bridge Club - Chris Galloway 684234

The Friends of Long Compton Church: fccsec@gmail.com

f: [@friendsoflongcomptonchurch](https://www.friendsoflongcomptonchurch.com/) and <https://www.friendsoflongcomptonchurch.com/>

Long Compton Sports Club:

Secretary: Andrew Lund-Yates 07813 032144/ 01451 820467 andrewlundyates@gmail.com

Cricket: Andrew Badham 07900-466339 and ewbadham@icloud.com

Your Village Editor: **Melanie Arnold**



Originally from Cherington I arrived in Whichford in 2010 and became village editor just over 2 years ago. I've always loved the Link and the connection it gives us all - the history pieces from the villages are my favourite, along with the wonderfully informative 'Notes' each month. Being an editor is surprisingly easy and very rewarding. I like the contact it gives me with other people in the village, although there's the odd quiet month when not much content comes in, so you do sometimes have to drum some up!

Victor Stanhope Bennie

Vic Bennie lived in Whichford with his beloved wife Mary for the last 14 years and tragically died as a result of a fall just before Christmas. He will be remembered for his friendly manner and quick wit, as well as his interesting hats and a preference for shorts, whatever the weather. He and Mary came to Whichford for family reasons after living a wonderful life in the Pyrenees for the previous 7 years. Vic was a great giver in the community, always interesting and always interested in everyone. He was a passionate hill walker and a very talented photographer. Mary and Vic travelled extensively together, going long distance walking especially in remote areas of the world. Vic captured the wild beauty of the mountains with his camera. His love of the mountains was inspirational to him, and to others through his photographs.

Vic was hardworking: skilled at DIY and making things, an excellent sportsman and was musical too. He could play the bagpipes which he learnt to do in America. He also had a wonderful singing voice. And he was an excellent cricketer, playing for Kent. More than all of that, Mary and he together with their two daughters Sarah and Bronwen had a wonderful family life together which both daughters mentioned in their joint eulogy. Vic was an engineer, working first at Esso and later at British Oxygen, and it was work which took the family to America in the early years and then Rudgwick in Sussex before Vic and Mary went to the Pyrenees.

Above all we shall remember Vic for his enthusiasm for life and his love of his family.

Craft Club



A colourful dressing gown modelled by Diana is the latest project coming from our monthly craft meeting. It is made from knitted squares and will be sent off to a charity called Knit for Peace. (One of our group highlighted this as a worthwhile enterprise for us to support a couple of months ago.)

We were Impressed with the stylish look, of course much enhanced by the model.

If you would like to join our friendly group, do get in touch. We bring whatever knitting, sewing, tapestry, jewellery making etc we would like. We usually meet at 10.00am on the second Monday of the month.

Mandy James 684479

The Reading Room Draw

Congratulations to Julie Cawley who was the winner of the February Reading Room draw.

Jenny Scrivener

2023 NGS Open Gardens

Please hold the date of Sunday 18 June for the NGS (National Garden Scheme) Open Gardens in Whichford and Ascott. We're hoping to open 9 gardens this year, including 2 new gardens. There will be home-made teas in aid of St Michael's Church, a plant stall, and a raffle.

More details to follow.



Pet of the Month (an extra one, just for Whichford)



Nina

"Dad, it's cold - can we go home...?"



Dawn over Whichford by Robert Ward

VILLAGE NEWS

THE WOLFORDS

Editor, Little Wolford Email: littlewolford@swlink.org.uk

Editor, Great Wolford: Lynn Mathias

Email: greatwolford@swlink.org.uk Tel: 674247

Your Village Editor: Lynn Mathias



We have lived in Great Wolford since 1981, our younger son was born here and it has been our family home since then.

Wolfords WI – January / February 2023

Here we are in 2023 and getting set for another exciting year. 2022 was our centenary year and we celebrated in style with lots of activities. It culminated in our end of centenary year/ Christmas dinner at The Lion, Tredington on January 13. Fifteen of us most certainly dined well and enjoyed an evening of banter, jokes and great conversation. We have marked our centenary year with various tokens and ended the year with a tote bag styled with our centenary year logo!

Can we follow this? Of course! February's meeting was, as always, full of chatter and laughter. Our speaker was mind, body and life coach, Zoe Knight from Brailes. She talked about embodiment and how we should listen more to our inner intuition and the signs, thoughts, and messages that our body is telling us, perhaps what we would normally term gut feeling. She related this to how modern research was finding more and more about power of the gut, and how it effects our overall health and mental wellbeing. We participated in a few exercises, that definitely left us with lots to discuss over refreshments. Zoe was a very inspiring lady, whom I am sure we will invite back again, to give us more of her insights.



Our next meeting - 'A night with the judge (not John Deed but of County Shows' - is March 1, 7:30pm at the Wolford's Village Hall. If you have ever wondered what goes on in the judging tent, or how the best in show is picked, Chris Small who has judged shows for many years, will be spilling the secrets.

If you would like to join us, your first visit to our meetings is free. Subsequent meetings, if you do not want to join or are undecided about joining the WI, are £5, which includes refreshments (and very fine refreshments they are too). We also have activities outside the members' night,

If you are interested in coming along to our members' meeting or any of the other activities, or have any questions about Wolfords WI and the activities, please contact Gilly on 07812 344 598, gillyhd99@hotmail.com.

The Wolfords Village Hall One Hundred Club

February 2023 Winners

1st prize – Virginia Sandbach 2nd prize – The Murphy family 3rd prize – Henry Warriner

Many congratulations to the above. Please let me know if you would like to have more shares as the club is still short of 100 shares. Of course, multiple shares do increase the chance of winning! All proceeds go to help with the upkeep of the village hall.

James van Helden



FIRST CLASS FISH AND CHIPS



TAKEAWAY OFFER

On Saturday 11 March you're invited to come and collect your pre-ordered fish and chips in a specified time-slot direct from the van we've always used at the hall. Regulars have said it's the best fish and chips around. The van will be parked by the crossroads in Great Wolford from 6.00pm.

To keep the delivery on the night quick and efficient we're asking for payment to be made in advance when we confirm your order. Of course, you don't need to be a Wolford resident to join in – if you can come and collect then you're very welcome to place an order. £11 per serving

We will also be running our raffle with lots of prizes - tickets £1 per strip or 6 for £5

To order please contact: Ann McKenna (email: annmckenna3@sky.com) (Tel: 01608 674009)

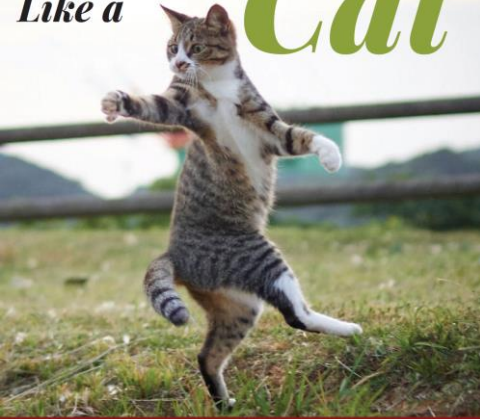
In aid of Wolford church upkeep. Please help us to maintain the church and churchyard at the centre of our village.

Decision made on future of local governance in the Wolfords.

On 31st January a 'Stratford-upon-Avon (Reorganisation of Community Governance - Parish of Great Wolford and Little Wolford) Order 2023' came into force and will have effect from 4th May. This was the outcome of the Community Governance Review conducted by Stratford District Council to decide the future of local governance in the Wolfords.

It has been agreed that a new joint parish council will be created, replacing Great Wolford Parish Council and Little Wolford Parish Meeting. The new council will be called The Wolfords Joint Parish Council and is to have five councillors, four to be elected from Great Wolford and one from Little Wolford. Elections will take place on 4th May.

Move Like a Cat



Learn Tai Chi & Qigong

Brailles Wed 5.45-6.45pm
Hook Norton Fri 5pm-6pm

www.taichiflow.art
07986622049

FLOW
Tai Chi & Qigong



DAVID BUTLER PLUMBING & HEATING

A family-run business for over 40 years,
specialising in:

- Oil, LPG & Gas Boilers
- Central Heating
- Heat Loss Surveys
- Thermostat Control Upgrades
- General Plumbing
- OFTEC and Gas Safe Registered

For general enquiries or to book a service:

Call: James Butler 07760977058

Email: dbutlerheating@gmail.com

litho printing
digital printing
giclée printing
pantone printing
graphic design
fine art scanning
print finishing

T 01608 737 640

E enquiries@kmslitho.co.uk

www.kmslitho.co.uk

Railway Bridge House, Station Road,
Hook Norton, Oxfordshire OX15 5LS

KMSLITHO

YOUR PRINT, OUR PASSION

SHIPSTON SPOKES

VISIT OUR SPECIALIST E-BIKE CENTRE



ALSO IN STORE

- ADULT AND JUNIOR BIKES
- WIDE RANGE OF SPARES & ACCESSORIES
- CYTECH CERTIFIED WORKSHOP
- AUTHORISED BOSCH SERVICE CENTRE

Shipston Spokes, 9 Church Street, Shipston-on-Stour, CV36 4AP

T: 01608 664588 **E:** shop@shipstonspokes.com **W:** shipstonspokes.com

OPENING HOURS: Tuesday to Saturday 10am - 4pm

Drop off & collection for repairs or servicing can be arranged out of these hours if required

Sun Rising

Natural Burial Ground
and Nature Reserve

A place of deep peace where
loved ones can be laid to rest
in growing woodland and
wildflower meadows.



01295 688488

sunrising.co.uk

near Lower Tysoe



Blocked Ears?



EAR WAX can be troublesome and cause
sudden loss of hearing, feel uncomfortable
and itchy – but it can be easily removed at
our clinic in Blockley.

The Willows

NORTH COTSWOLDS EAR HYGIENE CENTRE

Unit 47, Northwick Business Centre,
Blockley, Moreton-in-Marsh, GL56 9RF

Book Online: www.earhygienist.co.uk

Or contact Issy today: 01386 701650

issy@earhygienist.co.uk

John Napier Forestry and Timber

Trees purchased: standing, felled dead or live.

Hardwood Boards and Oak Beams available on request.

Seasoned, dry barn stored, locally-felled
firewood and kindling

07816 379836

jnapierforestry@yahoo.co.uk

website: jnapierforestry.com

Oats Health Foods



Comprehensive range of foods,
supplements, body care and
eco-household goods.

Upstairs a greeting card gallery plus
anything else that takes our fancy.

26 High Street
Chipping Norton, OX7 5AD
Tel: 01608 64 65 56

CHERINGTON LOCKSMITHS & HANDYMAN



LOCKS CHANGED
FLATPACKS ASSEMBLED
SHELVES PUT UP
PAINTING
NO JOB TOO SMALL

TO FIND OUT MORE
GIVE US A CALL
01608 685957 / 07970 321718
JOHN OR ANNE



Hardwood Logs

seasoned for 12 months - air dried - sustainable resource

Full Load £170.00

Half load £85.00

Kindling XL bag £15.00

FREE local delivery

Stacking service from £10.00

Percy: 07788 778 000

Email: hello@wolfordwood.com

Or use the QR code to order on-line



Find out more at www.wolfordwood.com



PICTURE FRAMING

Competitively priced framing of artwork, prints, photographs, using conservation techniques and materials.

A wide range of frames, mounts and decorative options available.

BRIAN SIMPSON

20 Roman Row, Whichford, CV36 5PJ

Tel: 01608 684787 / 07818 529095

Web: www.bmspictureframing.com

f : [fb.me/briansimpsonframing](https://www.facebook.com/briansimpsonframing)

Email: brian_simpson@live.co.uk

DANIEL KNIGHT

**SEASONED
HARDWOOD LOGS**

£110.00 A LOAD

KINDLING AVAILABLE

07815 795783

danielknight27@outlook.com



*physiotherapy clinic & pilates studio
A helping hand to get you back to health*

**Physiotherapy
Sports Massage
Pilates Classes**

Visit the website for more information
or call to speak to a member of the team

T: 01608 645 608

E: physio@chippingnortonphysio.com

www.chippingnortonphysio.com

Morgan Roofing Services

07765 228784



We are one of the leading roofing companies in Warwickshire and West Midlands. We undertake all types of traditional, domestic and commercial roofing work including: repairs and restorations, re-roofs and flat roofs, lead roofing, and built up felt roofing.

For a free quote, call **Peter Morgan on 07765 228784** or 01608 433032 or 01386 304324. Email: **morg11p@hotmail.co.uk**

We provide completely free no-obligation estimates for all jobs.

www.morganroofingservices.co.uk

Give us a detailed description of what you want done, and we'll respond quickly with a detailed, no-obligation estimate.



SNJ CARPENTRY AND GLAZING

WWW.SNJCARPENTRYANDGLAZING.CO.UK

SPECIALISTS IN
INTERNAL AND
EXTERNAL CARPENTRY
AND GLAZING.

- Door hanging
- Skirting and Architrave
- Bespoke built in cupboards
- Wooden flooring
- Replacement Windows and Doors
- New Windows and Doors
- Replacement glass
- Replacement hinges, handles or locking mechanisms



CONTACT US FOR A NO OBLIGATION QUOTE:
07851 436 136 / 01608 661352

THE LINK



THE LINK

The LINK can offer
your local business.....

Advertising across the
SW7 Benefice directly into the
community.

We can help put your advert
together and for a suitable
commitment, we may be able to
offer some 'advertorial'

Please contact Keith Murphy
adverts@swlink.org.uk

THE LINK



THE LINK

HALL FOR HIRE

Burmington Village

Historic hall in a pretty location
Carpeted, heated hall
Well equipped kitchen
Tables, chairs & cloths
...all included in the price

Contact Irene Clarke 01608 656296

K.A. PERKINS

SITE CLEARANCE **PLANT HIRE** **GROUND WORKS**

**Water Supplies, Drainage, Ditching
Road & Drive Construction
Tarmacing, Patios, Block Paving**

DEMOLITION Tel: 01608 686189 **BUILDING**
Mobile: 07702106739

R. Locke & Son
Independent Family Funeral Directors - Est. 1853

t: (01608) 685274 Caution Corner, BRAILES, OX15 5AZ



Generations of Care

For more information about our services, to view our funeral announcements and online donations, please visit



www.rlockeandson.co.uk

Golden Charter
Funeral Plans 

THE WOLFORDS VILLAGE HALL

Ideal for children's parties, meetings, classes,
family gatherings, BBQs, company training
- seats 50 - 60, (80 standing)
- excellent disabled access
- well-equipped, modern kitchen

Bookings:

<https://www.thewolfordsvillagehall.org.uk>

**Fed up with the headache of
bookkeeping?
Let me handle everything for you.
Professional Bookkeeping and
Payroll Service**

Vat returns* Annual accounts* Cash flow*
Monthly figures
Bank reconciliation* Using your system or
starting from scratch

Ann McKenna MICB CB.Dip PM.Dip
Leylands Business Services

07500 678206/ 01608 674009
annmckenna3@sky.com



**Member of the Institute of
Certified Bookkeepers**

John Lyne homehardware

Stockists of a wide range of DIY, Household,
Gardening and Cookware products

Shop Local - no need to travel out of town!

Free local delivery service
1 High Street, Shipston-on-Stour.
Tel: 01608 661422

OPEN: Mon to Fri: 8am-5.30pm. Sat: 8am - 5pm

www.homehardware.co.uk

Sole Funeral Service

Bidston Close, Over Norton

Sympathetic & personal service
from a qualified funeral director
with private chapel

Memorials designed & supplied

Tel: 01608 644112

at any hour

TAXI!

CLARKES OF SHIPSTON

Licensed Private Hire
Airport Service

To book or obtain a quote call:

(01608) 661418

or email:

stuart.clarke@lineone.net

W E Sutton Ltd

Ground Works & Plant Hire

Est. 1963



Long established and experienced company

- All types of ground works
- Drainage
- Plant hire
- Council Approved contractors

7 Brook Cottages, Willington, Shipston on Stour,
Warwickshire CV36 5AU

Tel: 01608 663300 Fax: 01608 664669

Mobile: 07970 632265

Need a Good Venue?

Long Compton Village Hall
can meet your needs, **as
soon as normal service
can be resumed.**

Superbly equipped kitchen, ample
parking, capacity for up to 100,
separate meeting room, china and
furniture hire.

Wifi now available!

Call Ann Lattimore on 01608 684540
or email lcvillagehall@yahoo.co.uk
for more information, or to make a
booking.

Long Compton Village Hall



Andrew James Dermatology
provides the following services:

Mole Mapping - to identify skin cancers
and suspicious moles earlier rather than
later. Yearly or biannual surveillance.

Skin lesion identification - to put your
mind at ease.

Minor Skin Surgery - for non-cancerous
skin lesions such as warts, skin tags,
seborrheic keratoses, dermatofibroma,
moles and more.

General Dermatology - acne, eczema,
psoriasis, infections.

Website

www.andrewjamesdermatology.com

Email

admin@andrewjamesdermatology.com

Phone - 07508 039785

Jonathan Perry
CHIMNEY SWEEP

Open fires, Inglenooks, Wood burners,
Agas

For a clean, friendly and professional
service please contact me on:

Tel: 07557 058051

Email: jperrychimneysweep@gmail.com



Guild of Master Chimney
Sweepers qualified



All work certificated for house
insurance purposes

Long Compton Village Stores

Main St, Long Compton.

- ✓ **Takeaway food: hot pies, fresh cut sandwiches, tea & coffee etc.**
- ✓ **Instore bakery, cakes pastries etc.**
- ✓ **Dry Cleaning**
- ✓ **Greengrocery, dairy products, confectionery**
- ✓ **Gluten free products**
- ✓ **Newsagents & Stationery**
- ✓ **Off licence**
- ✓ **Flowers**
- ✓ **Home delivery**

Tel: 01608 684277

MUSIC TUITION
Tuition in Classical Guitar
and Piano.
All ages welcome.



Dr. Julian Grimshaw
B.Mus, D.Phil (Oxon)

01451 821525

07891 423855

jdwyergrimshaw@btinternet.com

**Auction Sales &
Valuations**

Valuation, collection and auction
service of individual items
through to complete property
and commercial clearances.

Call for a free no obligation quote or
email info@leauction.co.uk

SALE ENTRIES NOW INVITED

www.leauction.co.uk



LOCKE & ENGLAND
AUCTIONEERS & VALUERS

**01926
889100**

**18 Guy Street,
Leamington Spa,
CV32 4RT**



THE RED LION

a country inn with rooms



Special Mother's Day Lunch Menu

3 Courses - £40 per person

Bookings 12 - 4.30pm

Contact us for further details

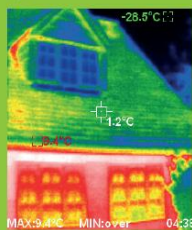
Long Compton, Nr Shipston on Stour,
Warwickshire CV36 5JS
Telephone: 01608 684221

www.redlion-longcompton.co.uk

   @redlionlongcomp



Plan the energy upgrade for your home



All products shown are timber-composite windows



ENLIGHTENED WINDOWS

Truly the next generation of products

Specialist installer of alu-clad,
low maintenance wooden windows

Very high performance

Expected to last over 60 years

A wooden window with no repainting

FREE thermal imaging survey
of your home with every installation.
See where your home leaks heat



01608 684607

enlightenedwindows.co.uk



Compassionate Care for people of the Cotswolds



Shipston Care

Shipston Care is a leading home care provider based in the Cotswolds. We offer a Live-in care service that can be a great alternative to leaving the familiar surroundings of your own home.

Our success is built around the quality of our carers and support staff who will carry out a **free, no obligation needs assessment** to establish what your individual needs are.

Whether you require personal care, assistance with daily activities, or would just like some companionship, we are dedicated to delivering the highest possible standards of live in care to enable you to continue living in your own home.

For an informal chat, please give our friendly team a call on 01608 663377



"I knew, through my work as a nurse at a local Hospital, of your good reputation and responsiveness before you started caring for my mum. However, it was only when she needed your help that I realised quite how good you are. It's been quite reassuring knowing that mum had been safe at home with your carers. I know that she is also grateful for the stability this has provided. Without your support, my mum wouldn't have been able to stay in her home for so long - and the way you have been able to increase care rapidly when she needed it helped with this." Phillip Vial.

We have built our reputation on:

- Carefully matching the carer to you, our client
- Our support for daily activities
- Empathetic Personal Care
- Respectful Companionship Care
- Safe Medication Handling
- Excellent Meal Preparation

You will benefit from:

- Industry best yet affordable care
- The services of one carer who is carefully selected to best suit you, your needs, and your lifestyle
- Catering for your requirements and ongoing needs
- A personalised service

enquiries@shipstoncare.co.uk | 4 Granville Ct, Shipston-on-Stour, CV36 4PP | 01608 66 33 77

Shipston Care Limited is fully regulated by the Care Quality Commission

Half-Price Seconds Sale at Whichford Pottery

Friday 24th to Sunday 26th March



Whichford Pottery, Whichford, Nr. Shipston-on-Stour, Warks, CV36 5PG
Tel: 01608 684416 www.whichfordpottery.com