

# THE LINK

A COMMUNITY MAGAZINE FOR THE  
SEVEN PARISHES IN THE SOUTH  
WARWICKSHIRE 7 BENEFICE

January 2023

£1.20



■ BARCHESTON with WILLINGTON ■ BARTON-ON-THE-HEATH

■ BURMINGTON ■ CHERINGTON with STOURTON ■ LONG COMPTON

■ WHICHFORD and ASCOTT ■ THE WOLFORDS

# EVENTS DIARY

Contact: **The Editor**  
Email: [editor@swlink.org.uk](mailto:editor@swlink.org.uk)

## Events Update

January (VH = Village Hall; Ch = Church)

Fri	06	Feel Good Friday, The Hall, Stourton	14.00
Sun	08	Charity Quiz Red Lion Long Compton	19.30
Tues	10	Walking group, Red Lion, Long Compton	09.30
Tues	10	Cameo Lunch Club, VH Burmington	Noon
Thu	12	Long Compton Book Club	19.00
Sat	14	Downton Abbey; A New Era, Brailes	
Sat	14	Burmington Barn event	09.00
Sat	14	Social Saturday, VH Long Compton	11.00
Sat	14	Opus di Jazz, Barcheston church	19.00
Sun	15	Beneficial Book Club, Barton	17.50
Fri	20	Feel Good Friday, The Hall, Stourton	14.00
Sun	22	Memorial service for Val Flint, Cherington	10.30
Sun	22	Charity Quiz, Red Lion, Long Compton	19.30
Fri	27	Thai evening menu, Burmington	18.30



**LINK cover:** *Winter morning in Long Compton-2022*

Photograph by Sara Billins LINK editor

The LINK welcomes contributions for the front cover or elsewhere. Portrait orientation and good quality photographs or artwork preferred. Please send items to [editor@swlink.org.uk](mailto:editor@swlink.org.uk)

LINK cover and artwork produced by KMS Litho, Hook Norton.



<https://www.swlink.org.uk/>



# Your Chance to Vote!!!

Vote for your favourite cover of 2022...

Please let us know your favourite LINK cover of 2022. All you need to do is to email [editor@swlink.org.uk](mailto:editor@swlink.org.uk) by Monday 16 January and let us know which month is your choice. We will publish the result of the poll in the February edition of The LINK. To see the covers on your computer or phone, please go to: <https://www.swlink.org.uk/cover-of-the-year>



January



February



March



April



May



June



July



August



September



October



November



December

# THE LINK TEAM

Editor	Sara Billins	editor@swlink.org.uk
Treasurer	Martin McKenna	treasurer@swlink.org.uk
Advertising Manager	Keith Murphy	advert@swlink.org.uk
Distribution Manager	Alan Holmes	distribution@swlink.org.uk
Chairman	Keith Murphy	chairman@swlink.org.uk
Company Secretary	Martin McKenna	secretary@swlink.org.uk
Online Manager	Keith Murphy	online@swlink.org.uk

## Village Editors

Barcheston & Willington		barcheston@swlink.org.uk
Barton-on-the-Heath		barton@swlink.org.uk
Burmington	Graham French	burmington@swlink.org.uk
Cherington & Stourton	Christine Dudfield	cherington@swlink.org.uk
Long Compton		longcompton@swlink.org.uk
Whichford & Ascott	Melanie Arnold	whichford@swlink.org.uk
Great Wolford	Lynn Mathias	greatwolford@swlink.org.uk
Little Wolford		littlewolford@swlink.org.uk

## Feature Editors

Church News	Liz Clarke	officesw7@gmail.com
Nature Notes	Tony Partridge	editor@swlink.org.uk
Gardening Notes	Margaret Welsh, Miranda Arnold	editor@swlink.org.uk
Farming Notes	Lynn Mathias	farming@swlink.org.uk

## Village Distributors

Barcheston & Willington	Maki Sutton	661539
Barton-on-the-Heath	Helen Seymour -Smith	674153
Burmington	Julia Anne Sykes	07497 088 882
Cherington & Stourton	Ebe McLeod	686278
Long Compton	Jean Taylor	684806
Whichford & Ascott	Carol Moore	684961
Great Wolford	Sue Rew	674380
Little Wolford	Colin & Gill Ablewhite	684962

Please note the copy deadline for February 2023:

Monday 16 January

THE LINK is published by South Warwickshire LINK Ltd, a not-for-profit company limited by guarantee (reg. no. 07234681), and printed by KMS Litho Ltd, Hook Norton.

The opinions expressed in The LINK are not necessarily those of the Editor or any member of the LINK team. Whilst every effort is made to ensure accuracy of information printed, the Editor/team do not accept any responsibility for the consequences of any errors that may occur. The LINK does not endorse any products, services, or companies. The appearance of advertisements in this magazine is not a guarantee of those products/services or the companies that manufacture, distribute, or promote such products/services.

All information held by The LINK is strictly confidential and is held purely for administration purposes and not sold or offered to third parties.

All subscription monies paid to The LINK are non-refundable in the event that the South Warwickshire LINK Ltd. ceases to operate.

# EDITORIAL

## **LINK Talk**

Happy new year and welcome to the first LINK of 2023. I would like to extend my thanks to your outgoing editor Keith Murphy, not only for his many years of service but also for the tremendous help he has given me during the editorial handover. The LINK is such an important asset to our community of villages, and I am pleased to be able to make a small contribution to ensuring its continuity. I take over as editor at a time when rising print costs have led to a slight increase in the price of a magazine which, nonetheless, still offers excellent value for money. However, just as importantly, the magazine relies on a team of volunteer village editors and distributors who ensure that each village is well represented and that a copy drops onto your doormat each month. You will notice that there are an increasing number of gaps in the team so do please consider if you have the capacity to lend a hand. My aim this year will be to increase circulation and up subscriptions, so if you are not yet a subscriber do, please read on below, consider signing up and help to ensure that this great little magazine has a healthy future.

**Sara Billins Editor**

## **LINK Subscriptions - 2023**

Many of you have now paid your 2023 subscription by BACS online bank transfer. Many thanks. We were hoping to collect these all in before the end of the 2022, so if you haven't made your BACS payment, please could you do so.

January sees the start of the 'cash on the doorstep' collections of the £12 annual subscription. If you wish to change to online bank transfer which is certainly easier for us, please contact me at [online@swlink.org.uk](mailto:online@swlink.org.uk) and I can arrange to give you your reference number and payment details.

Please be aware that we continue to offer the 'online only' option for £6. Again, contact me at [online@swlink.org.uk](mailto:online@swlink.org.uk) for further details.

The final payment option available is to post a cheque to our treasurer (address below). Please make the cheque payable to South Warwickshire LINK Ltd. and make sure your name and address are on the back of the cheque.

Send to: Mr. M. McKenna, LINK Treasurer 'Leylands,' Great Wolford, Shipston on Stour Warwickshire, CV36 5NQ

**Keith Murphy, [online@swlink.org.uk](mailto:online@swlink.org.uk)**

## CAMEO LUNCH CLUB



So, who was Santa at CAMEO's Christmas lunch, our 13<sup>th</sup> Christmas get-together and one of the busiest? He simply slipped in and out to distribute a bumper stock of gifts and didn't even stay for the club's magnificent traditional lunch or to join in the carol singing.

### **Next meeting: Tuesday 10 January**

All are welcome. Don't forget the Club meets on the second Tuesday of every month in Burmington Village Hall at 12 noon for 12.30 pm. Come and join us. We are renowned for our welcome, our food and our chatter. **Please book with Brenda Fitch on Tel: 664313**

## **Moreton-in-Marsh Country Market will reopen THURSDAY 2nd FEBRUARY 2023**



Find us in the WI Hall, New Road, Moreton in Marsh,  
every Thursday, 10.00 am to 12.00 pm



**We will be back to a full market offering Bakes & Savouries,  
Veg & Eggs, Preserves, Crafts, Cards and Gifts.**

**We are also looking for new producers and helpers. Why not make some money from  
your cooking and crafting! Contact Angela on:-**

**07933 141410 / [mimcountrymarket@gmail.com](mailto:mimcountrymarket@gmail.com) or find us on Facebook**

**A big thank you to all our customers for your continued support.**

# INFO LINK

Contact: **The Editor**  
Email: [editor@swlink.org.uk](mailto:editor@swlink.org.uk)

***The Post Office van is in the car park by the village shop in Long Compton from 9.30 - 11.30 am Monday and Wednesday, and from 12.30 to 2.00 pm Tuesday and Thursday.***

***Shipston 'tip' is open - to book <https://www.warwickshire.gov.uk/recyclingshipston>***

## **DATES AND FETES – 2023**

Please send us the dates of all your significant social events.

Please check this list before you plan a new event.

<b>Sat 24 June</b>	Long Compton Community Fete
<b>BH Mon 28 August 2023</b>	Whichford and Ascott Flower Show and Fete

## **Local Catholic Church Services**

### ***Chipping Norton***

Holy Trinity, London Road. Saturday Vigil 6.00 pm. Sunday 11.00 am Tel: 01608 642703

### ***Stow-on-the-Wold***

Our Lady and St. Kenelm, 5 Back Walls. Saturday Vigil 6.00 pm. Sunday 9.15 am Tel: 01608 674354

### ***Shipston and Brailes***

Shipston, Our Lady and St. Michael, Darlingscote Road. Sunday 9.15 am  
Brailes, SS Peter and Paul, Friars Lane. Saturday Vigil 5.00 pm (for Shipston and Brailes  
Tel: 01608 685259)

### ***Chipping Campden***

St Catharine's Lower High Street. Sunday masses: – Saturday Vigil 6.00 pm. Sunday 10.30 am Tel: 01386 84026

## **Local Quaker Meetings**

Local Quaker Meetings for worship:

Broad Campden, Quaker Meeting House, GL55 6US - Sundays at 10.30 am

Ettington, Quaker Meeting House, Old Halford Rd, CV37 7TH - Sundays at 11.00 am

Sibford, Quaker Meeting House, Sibford Gower, OX15 5RX - Sundays at 10.30 am

Shipston on Stour, in St Edmund's Church - last Thursdays (not Dec) at 2.30 pm

## **Local Congregational Services**

Services recommence at the Ebenezer Chapel, Long Compton from Sunday 20 March 2022 (every third Sunday at 3.30 pm).

## Shipston and District Literary Society

### 2023 PROGRAMME

#### 2023

Wed 25 January	Ginny Davis	What Lies Beneath The Surface
Wed 22 February	David Howe	Remembering Frank Muir & Dennis Norden –two writers of comedy
Wed 29 March	Dr. Bob Bearman	Marie Corelli
Wed 26 April	David Constantine	Mother Earth, Beloved Earth
May/June 2022 (date to be advised) - Annual Outing		
Wed 28 June	Cheese and Wine Party	
Wed 30 August	2022/23 Annual General Meeting & Lunch	

Meetings are held at The Halford Bridge Inn, Halford, at 7.30 pm. Visitors welcome - £5 ea. For further information ring Helen Marshall 01789 740773



## PICTURE FRAMING

Competitively priced framing of artwork, prints, photographs, using conservation techniques and materials.

A wide range of frames, mounts and decorative options available.

### **BRIAN SIMPSON**

20 Roman Row, Whichford, CV36 5PJ

Tel: 01608 684787 / 07818 529095

Web: [www.bmspictureframing.com](http://www.bmspictureframing.com)

f : [fb.me/briansimpsonframing](https://fb.me/briansimpsonframing)

Email: [brian\\_simpson@live.co.uk](mailto:brian_simpson@live.co.uk)



The LINK can offer  
your local business....

Advertising across the  
SW7 Benefice directly into the  
community.

We can help put your advert  
together and for a suitable  
commitment, we may be able to  
offer some 'advertorial'

Please contact Keith Murphy  
[adverts@swlink.org.uk](mailto:adverts@swlink.org.uk)





## **GOOD NEWS!**

The LINK has been successful in its application for funding from the National Lottery! We are pleased to announce that we have received a grant of £4,000. This will be an immense help in offsetting the impact of increasing price rises and will help to secure a healthy future for the magazine. Well done and thank you to all those involved in writing the bid.



**Photo by Christine Dudfield -Village Editor Cherington and Stourton**

# PARISH PEOPLE

## Parochial Church Councils (PCCs)

### **Barcheston St Martin**

Churchwardens David Hodges 07767 840857  
 Secretary Alice & Tom Murray 238755  
 Treasurer David Cleave 666002

### **Burmington St Barnabas & St Nicholas**

Churchwardens Sonia Baker 661459  
 Michael Macdonald 662483  
 Secretary Sonia Baker 661459  
 Treasurer Stuart Walsh, 07870 154425

### **Long Compton St Peter and St Paul**

Churchwardens Jill Kirby 684923  
 Secretary Zoë Wrigley 650404  
 Treasurer Walter Sawyer 684755

### **Wolford St Michael & All Angels**

Churchwarden John Wrench 674389  
 Treasurer Ann McKenna 674009

### **Barton-on-the-Heath St Lawrence**

Churchwardens Hamish Cathie 674303  
 Secretary Gillian Cathie 674303  
 Treasurer Mandy McPherson 674734

### **Cherington St John the Baptist**

Churchwarden Roger Maycock 686404  
 Secretary Paul Levitch 686353  
 Treasurer Rory McLeod 686278

### **Whichford St Michael**

Churchwardens Mandy James 684479  
 Sophia Corlett  
 Secretary Lucy Simpson  
 Treasurer Jenny Scrivener

## Parish Councils

Barcheston  
 Barton-on-the-Heath  
 Burmington  
 Cherington  
 Long Compton  
 Whichford

## Chair

David Sutton  
 James Coker (674601)  
 Robert Hutchings (661496)  
 Philip Townsend (686529)  
 Simon Bing (684827)  
 Peter O'Kane (684888)

## Clerk

Lindsey Walker (663567)  
 Julia Hicks  
 Sara Cole (686250)  
 Sam Weller (684897)  
 Sara Cole (686250)  
 clerk.whichfordandascott@hotmail.com  
 Sue Finlay (661157)

Great Wolford Lynn Mathias (674247)  
 Little Wolford Parish Meeting Vacant (currently under Community Governance Review)

**If you wish to update information on this page, please email the Editor: [editor@swlink.org.uk](mailto:editor@swlink.org.uk)**



## Happy Birthday!

January Birthdays

Faith Hands	<u>Burmington</u>	15
Rebecca Parmenter	<u>Stourton</u>	9
Cameron Taylor	<u>Cherington</u>	18
Poppy Kinch	<u>Whichford</u>	15
Bethany Parmenter	<u>Stourton</u>	11
Orlando Matthews	<u>Whichford</u>	5
Liliana Stock	Little Wolford	1



SOUTH WARWICKSHIRE CHURCHES – SW 7 - Seven Parishes – One Church

January 2023 CHURCH SERVICES							
SW 7 Sunday Worship	St Martin Barcheston	St Lawrence Barton	St Barnabas & St Nicholas Burrington	St John the Baptist Cherington	St Peter & St Paul Long Compton	St Michael Whichford	St Michael & All Angels Wolford
<b>1<sup>st</sup> January</b> 2 <sup>nd</sup> Sunday of Christmas			10:30am CW Holy Communion (AW/CLW)				
<b>8<sup>th</sup> January</b> The Baptism of Christ	9am BCP Holy Communion (BD)				4pm GAP informal Service (BD)		10:30 am CW Holy Communion (BD)
<b>15<sup>th</sup> January</b> 2 <sup>nd</sup> Sunday of Epiphany			9am BCP Holy Communion (BD)		6pm BCP Evensong (BD)	10:30am CW Holy Communion (BD)	10:30 am Lay Led Service
<b>22<sup>nd</sup> January</b> 3 <sup>rd</sup> Sunday of Epiphany		9am BCP Holy Communion (BD)		10:30am CW Holy Communion (BD)	4pm GAP informal Service (BD)		
<b>29<sup>th</sup> January</b> 4 <sup>th</sup> Sunday of Epiphany				9am BCP Holy Communion (BD)	10:30am CW Holy Communion (BD)		

BD = Ben Dyson/LM = Liz Maycock/AW = Anthony Wells/CLW = Claire Wells/HP = Heather Parbury/AD = Andrew Dow/RS = Richard Smith  
BCP = Prayer Book/CW = Common Worship/GAP = Informal Service



## South Warwickshire Seven Benefice

Reverend Ben Dyson - Tel: 01608 656697 - vicarsw7@gmail.com (off duty Friday)  
 Benefice Administrator: Mrs Liz Clarke Tel: 07425 868855 Email: officesw7@gmail.com  
[www.southwarwickshirechurches.co.uk](http://www.southwarwickshirechurches.co.uk) facebook.com/sw7 churches



# SW7 BENEFICE CHURCH NEWS

## Church Services in your village and the South Warwickshire Seven Benefice *Come and join us!*



There are seven villages in the SW7 Benefice, each with its own Parish Church, but we all join together in worship every Sunday. Our Rector, Ben Dyson, leads our Ministry Team and takes most of our services across the seven villages: Barton-on-the-Heath, Barcheston, Burmington, Cherington, Long Compton, Whichford and Wolford.

There are at least two Sunday services every week; details of the service pattern are available on the Benefice website [www.southwarwickshirechurches.co.uk](http://www.southwarwickshirechurches.co.uk), on noticeboards outside each church and in the monthly Link magazine.

We offer three main types of church service. Every service lasts for about an hour.

### **1 Traditional Language**

The most traditional services follow the Book of Common Prayer (BCP), published in 1662. We offer three types of BCP service in our Benefice.

#### **BCP Holy Communion (usually at 9am)**

This service includes prayers, Bible readings, a short sermon, and hymns. Communion is given to all who wish to receive it.

#### **BCP Morning Prayer (usually at 9am)**

This service includes hymns, Psalms and prayers, Bible readings, and concludes with a sermon.

#### **BCP Evensong (usually at 6pm)**

This is similar to Morning Prayer with hymns, prayers and Psalms, Bible readings and a short sermon.

### **2 Modern Language**

Our modern language services are drawn from Common Worship (CW), which was published in the year 2000. The services are in simple language and are easy to follow. There are three types of service, all held at 10.30 am:

## **CW Morning Prayer**

This service includes prayers, hymns, bible readings and a sermon.

## **CW Holy Communion**

This service includes prayers, hymns, bible readings and a sermon. Communion is given to all who wish to receive it.

## **Regular Festivals**

We hold Christmas, Easter, Harvest and Remembrance services each year in churches across the benefice.

## **3 Informal Services**

For children, young people and those wanting a more relaxed form of church.

### **Benefice Informal Service (at 4pm)**

Known as the "GAP" service ("God and People"), this is usually held in Long Compton church. It takes place on the 1<sup>st</sup>, 3<sup>rd</sup>, and 5<sup>th</sup> Sundays in term time. There is usually a group for children of primary school age to receive age-appropriate teaching.

For adults, the service includes prayers, a Bible talk, and worship songs. Sometimes a short Communion is included. Food and refreshments are served afterwards.

## **A Warm Welcome**

All these forms of worship enable us to learn more about Jesus Christ and His impact on our lives. There are also small groups, suppers, and breakfast meetings for anyone wanting to explore the Christian faith more deeply.

Everyone across the Benefice is welcome at all the services in the seven churches, not just the village in which you live. All are within just a few miles and by coming to other churches around SW7 you will get to know people in every village and experience some lovely historic buildings.

Do come along, you will find a warm welcome.



**Reverend Ben Dyson**

## End of year thoughts

December comes around remarkably quickly and as every year I find it quite difficult to think of a subject. Little is happening on a farm such as this through December, mostly feeding and other chores. This year has had some plus points, because of the drought we had a very easy harvest, the crops needed very little drying which meant a considerable cost saving as we use a huge fan which eats up electricity.

The Autumn has also been remarkably open, November was very wet but because there was such a moisture deficit from earlier the ground has only just got to ground capacity, (when the ditches start to run) and we have been able to keep our few cattle out till nearly December, again a saving in time and money. As I write the weather has gone very wintery and everything is glad to be under cover with ad lib hay and straw and concentrates twice a day.

I was interested to note that Baroness Manningham-Buller, in charge of MI5 until 2007, speaking at the recent Henry Plumb Memorial Lecture chose to stress how important she felt it was that the UK needed to produce as much of its own food as possible. We are lucky in this country, at the moment, that our climate does not tend to years of drought or flooding which means that we should be able to produce many crops annually.

Using figures from the DEFRA report, *Agriculture in the UK 2020*, we are only 60% self-sufficient in food, the total made up of 16% fruit, 54% fresh vegetables, 71% potatoes, 86% beef and veal and 89% eggs. In the 1950's and 60's the figures were much higher, there is potential for improvement. At present, due to the very high cost of feed and to a lesser extent avian flu, poultry farmers are really struggling, losing about 0.40p on every dozen eggs sold to the main supermarkets. We all appreciate that the main supermarkets are trying their best to help keep the cost of living down but there is a cost to their suppliers in many situations. In an industry such as poultry it is very easy to dip in and out, a flock will probably only last months before new hens are brought in, if you are only losing money why would you re stock until the price paid to you improves? In cattle or beef this is not so easy, and it is particularly difficult to re start dairying, because of the capital required once a cycle has been stopped.

**Lynn Mathias farms in Great Wolford**

Now we come into the cold, dark days of winter when we turn up the heating, light our fire if we have one and put on our warmest clothes. But what of the animals and birds which have no such advantages to fall back on? Some will have eaten extra food in recent weeks thus building up fat reserves; additionally, their fur and hair will have grown longer and thicker. Some animals will even have undercoats which will add protection against the coldest of wind and rain, adapting the environmental temperature of their bodies. Not all though need to adapt their temperatures, for some, a normal metabolic temperature is sufficient.

But what else will animals do to protect themselves from winter's worst efforts? Well of course hibernation is one measure. Having built up an additional layer of fat through extra eating they will settle down to a long winter's sleep. During this time, the body temperature of the animal falls almost to the surrounding air temperature resulting in a lower heartbeat. However, hedgehogs and bats are the only British mammals to hibernate, so what of other animals? Foxes and snakes bury themselves out of sight whilst for butterflies, their winter activity is of course a part of their recognised life cycle, spending this period as a chrysalis or indeed a hibernating adult (who of us has not at one time drawn an unused curtain in winter to have a startled butterfly fly out?).

What then of birds? Well, firstly, an extra increased layer of down feathers is grown by some species. Others will gather in flocks giving mutual warmth and a feeling of safety and shelter in a suitable tree, an open barn or roof of any building. Here, flocking as they do is thought to be another important advantage in this procedure since as they huddle closely together, they perhaps exchange information on such important facilities as local feeding places. This is merely a theory of course but it is well known that birds communicate with one another so this idea is one which cannot be ignored. So, as we watch the cold winter (perhaps snowy) days and nights go by let us give an occasional thought to our feathered friends as they attempt to survive what weather the winter brings us.

Please forgive me if I once more write about the oak tree in the meadow behind our cottage. As I look out on it, I see a most wonderful display of autumn leaves. They will of course gradually fall as autumn turns into winter. But until then, I shall admire them from a distance. I looked up some literature about the oak tree and was surprised to see the number of diseases to which it may be subject. Here in south Warwickshire, we have a number of oaks thriving on the heavy clay soil of the

region which enhances the hedges and woodland. Thank the oak for helping us win the battle of Trafalgar! "Hearts of oak have our ships" go the words of the old song, as indeed they did. It's leaves, when fallen, will lie at the base of its trunk and have a part to play in winter's process. Insects shelter beneath them. Such are the attributes one can add to the oak, I am sure a whole book could be written about it. The oak belongs to the same botanic family – Fagaceae – as the beech. Here we have two strong well grown trees good at holding their own whatever nature may send them.



And as we progress into the beginning of the year, I am glad that nature has remembered our appreciation of her by providing an early welcome to the spring. I refer of course to snowdrops, a flower so determined to come out in the early part of the year. I swear that were we to suffer blizzards and an earthquake we would, having cleared our eyes, see snowdrops gaily blooming in the winter climate! At least it gives us a foretaste of spring to come and fresh flowers blooming and the leaves once again bedecking the trees!

**Tony Partridge**



**GARDENING  
NOTES**

Editors:

**Margaret Welsh**, Long Compton Garden Club

**Miranda Arnold**, Whichford Amateur Gardener

Welcome to 2023, and a new year for your garden. Let's hope we have a more consistent and appropriate range of weather this year - no more drought, please.

In fact, there is not a great deal to actually do in the garden in January - it's mainly all about planning. It's worth spending some time taking a thorough look at your garden, and maybe looking at some photos from last year, to see if that prompts pleasing memories or a level of dissatisfaction with plants that performed poorly, maybe because they were in the wrong place. Or perhaps you saw something in someone else's garden that you admired and wished you had.

If the weather is mild, and the ground isn't frozen, you can plant bare-rooted roses, shrubs, and hedging and you can lift and divide overgrown herbaceous perennials. It's also worth buying snowdrops and hellebores in flower at this time of year, so you can be sure you get exactly the varieties you want.



Sort through seed packets, and check that you've got enough of what you will need for the coming year, both flowers and vegetables. The RHS recommends you throw away out of date seeds, but I have definitely grown things from seeds that are a few years older than their Best Before dates. After all, many seeds stay dormant in the soil for years before germinating. It's worth a try, and if they fail to germinate, you can always buy some cheap plug plants later in the year.

It's a good time to plan the crop rotation in your vegetable garden. This is important to avoid the build-up of crop-specific pests and

diseases in your beds. It's also worth thinking about new varieties of vegetables you have grown before; for example, there are many newer varieties of blight-resistant tomatoes. Maybe you could even try out some vegetables that you have never grown before. I tried growing kalettes recently, and they were a great success: we had them available to eat throughout one of the lockdowns (I can't now remember which one!).

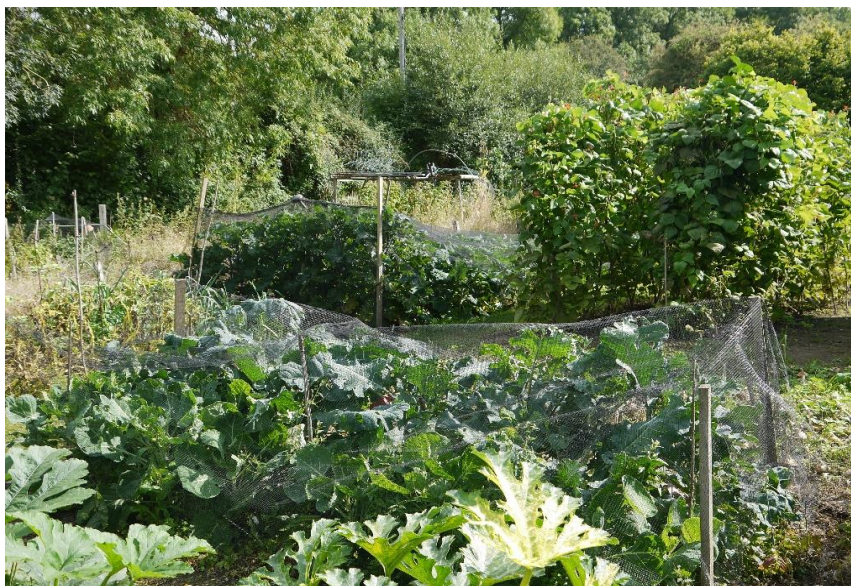
Weed your vegetable beds and mix in some compost or other organic matter at the same time. If you are desperate to get your hands on some fresh home-grown vegetables, try sowing some winter salad in a cold frame or sunny windowsill. Leaves like rocket, mizuna, and mustard are easily available and delicious - and only take a few weeks from sowing to eating.

If you do have a cold frame or, even better, a greenhouse, you can begin to sow flower seeds, like begonias and lobelia. If you didn't sow your sweet peas in the autumn, it would be good to get them going round about now in the cold frame.

If there has been bad weather over the last few weeks, check that winter protection and supports or stakes are still in the right place before the arrival of the cold winds of February and March.

Finally, don't forget the wildlife. Keep feeding the birds and making sure there is water available for them. Leave a few corners of your garden messy and uncut to act as shelter for insects and small mammals.

**Miranda Arnold**



## Burmington Barn News

### Pork

Burmington Barn pork will be available from mid-December. Please get in touch with Nat or Bex on 07496 859226 or 07368 431 215 for more details or to order.

### Next Event

Burmington barn smallholding will be hosting its next event on Saturday 14 January, 9.00-11.00am. This will be a chance to meet the new piggy residents.

Tickets will be available on Eventbrite - please get in touch on the numbers above for more details.

**Natalie and Becky**

## Postcard from Cairo

Life continues to be an adventure in Cairo. Halloween was very popular and now we are heading into the Christmas period which although real trees are impossible



to find there are plenty of decorations and festive cheer already!!

We have continued exploring and have been to Saqqara which I would recommend over the Giza as it's very accessible and without people trying to make you sit on camels which all have your name!!

We wish everyone in Burmington a Happy New Year!

**Guy, V, Peter and Harry**

## **Thai Night**

Thai Night is Friday 27 January 20 - 6.30pm for 7.00 pm. Come and join us for a selection of scrummy Thai dishes.

### Thai Evening Menu

Prawn Crackers

Larb, Tom Sum Salad and Galloping Horses

Beef Rendang, Red Chicken Curry, Yellow Vegetable Curry

Rice and dipping sauces

Tropical Pudding

We are also offering takeaway to be collected at 6.30 pm from the village hall. All dietary requirements catered for. Bring your own drinks. Tickets cost £15. Please contact 07966 849149 to book.

## **Sounds Historical at Burmington**

This talented group, playing on copies of original baroque instruments (theorbo; mandolin; viola da gamba; and recorda) gave us a delightful concert on 27 November.

The players who live in various parts of the country come together for concerts such as this, picking music which would have been heard by people embarking on the Grand Tour of Europe in the 18<sup>th</sup> century. There were some less well-known composers such as Jacques de la Guerre who was the first woman to compose an opera in France and the Spanish composer Guerra of whom nothing is known. We also heard a lovely trio Sonata by Telemann and a jolly dance: La Folia by Vivaldi. The evening was rounded off with wine and canapés.

# VILLAGE NEWS

BARTON-ON-THE-HEATH  
Email: [barton@swlink.org.uk](mailto:barton@swlink.org.uk)

## New Village Editor Required

Please be aware we still need a new village editor for Barton. A presence in Barton is much better for the village than doing it remotely. Please consider volunteering. In the meantime, your items should be sent to [barton@swlink.org.uk](mailto:barton@swlink.org.uk) and I will pick them up and edit the page.

**Sara Billins [editorswlink@gmail.com](mailto:editorswlink@gmail.com)**

## Beneficial Book Group

We all enjoyed meeting to talk about *Leonard and Hungry Paul* by Ronan Hession. This was an unusual book concerning two 'boys,' middle-aged friends, both slightly autistic but enjoying their time together playing board games and discussing their lives. There is very little plot, but it is a celebration of the lives of these two engaging characters. A gentle read.

Our next meeting will be on Sunday 15 January at Barton House at 5.30 pm, when we will talk about *The Feather Thief* by Kirk Wallace Johnson.  
Happy reading and Happy New Year!

**Gillian Cathie**

Remember – you can opt for the online LINK and stop or retain your printed copy through the door. It's your choice. Annual Subscription for 'online only' is half that for the printed magazine so sign up today and never have to search the house for your paper copy!

THE LINK

<https://www.swlink.org.uk/>

THE LINK

Email [online@swlink.org.uk](mailto:online@swlink.org.uk) for more details

# VILLAGE NEWS

BARCHESTON WITH WILLINGTON

Editor: Please email – [barcheston@swlink.org.uk](mailto:barcheston@swlink.org.uk)

THE BOLLING QUARTET PRESENTS



JANUARY

14

7PM

# Opus di Jazz

FEATURING

**CATRIONA BOURNE  
ETHAN WINDLE  
RAYMOND YIU  
KOBE HEATH-NGUGI**

PLAYING JAZZ - CLASSICAL FUSION MUSIC BY  
BOLLING, GERSHWIN AND MOWER

£25 tickets in aid of St. Martin's, Barcheston - drink included  
Email [david@famington.co.uk](mailto:david@famington.co.uk) to book

**FAMINGTON FARM**

Willington, CV36 5AX

# VILLAGE NEWS

## CHERINGTON WITH STOURTON

Editor: **Christine Dudfield**

Email: [cherington@swlink.org.uk](mailto:cherington@swlink.org.uk)

Tel: 686288

### Christmas Greetings List Donations

Thank you to all who have already donated. A gentle reminder to those who have yet to do so, please let us have your donations as soon as possible, so that the grand total can be included in the February Link.

For online Link subscribers who donate to the Christmas Greetings List and have not received a paper copy of the list, please send your email address to [brookes@tonyb51.plus.com](mailto:brookes@tonyb51.plus.com) and we will send you one.

**Pam Brookes**

### Brailles Picturehouse

**Sat 14 Jan** Downton Abbey, A New Era

Film Show dates are not necessarily the third Saturday in 2023 due the availability of Village Hall.

**Deirdre and Team**

### Stour Health and Wellbeing Partnership Feel Good Friday Social Afternoons

Happy New Year, I hope you all had a lovely Christmas. Thanks to everyone who joined us for the Christmas prize bingo on 8 December, another fun afternoon.

As I advised last month, I have further funding which allows me to continue in 2023. Dates for your diary for January are Friday 6 and Friday 20 from 2.00 pm at The Hall, Pinfold Lane, Stourton, CV36 5HG; we will continue to have free refreshments. I will be distributing leaflets in due course which will detail the January, February, and March dates.

For more information, please contact me on 01608 663320.



**Vanessa Compton**

### Val Flint- Sunday 22<sup>nd</sup> January

Combined with our 10.30 am service on Sunday 22<sup>nd</sup> January we will be celebrating and giving thanks for the service of Val Flint, who was Church Warden here for many years. The PCC will serve refreshments after the service.

All are warmly invited to gather with us, as we remember our dear friend, Val.



# The Hall

Cherington Stourton Sutton-under-Brailes

## Hall Social Membership – Apply Today

The Hall provides a social hub for the three villages of Cherington, Stourton and Sutton-under-Brailes, it provides a venue for events, classes, activities, and parties and as a meeting space for the community.

Social Membership is an indication of support to the charitable aims of the hall trust. Members will receive regular email

updates on hall activities and will be invited to relevant events. It is open to those, 18 years old and over, who are resident in one of the three villages. Members will be invited to attend general meetings including the AGM, but membership itself neither gives rise to responsibility over the hall trust, nor over any management issues. Membership enables transparency for governance of the hall. Members are entitled to vote at an AGM to appoint new trustees. You may cancel your membership at any time, and this will cease automatically if you are no longer a resident of one of the three villages. To apply for Membership please scan the QR code or complete the application online at <http://thehallevnts.org.uk/social-membership/>

application forms reception.

If you do not receive relevant



Alternatively, there are paper to fill in, which can be found in The hall

qualify for membership but wish to information, please contact us by email [info@thehallevnts.org.uk](mailto:info@thehallevnts.org.uk)

## Village Hall A.G.M.

The A.G.M. will be held in the hall on Tuesday 24<sup>th</sup> January at 7.30pm

**Jim Walton**



## Warm Hub at The Hall

We are now able to open the Hall during the winter more often so that anyone from the three villages of Cherington, Stourton and Sutton-under-Brailes can drop in, to join with others for a chat, or

simply to sit to read the paper or surf the internet, (there is free Wi-Fi).



Everyone is welcome to pop in for a free cup of tea or coffee, cake, and good company.

For further information contact Averell Kingston 07984 003675

### **Coffee Shop**

There isn't a Coffee Shop in January, but we look forward to seeing you all at our February one.

We are always open to new ideas: would you like something different on the menu? Would you like to help out occasionally? Would you like a craft stall?

Please contact us at [christinedudfield53@gmail.com](mailto:christinedudfield53@gmail.com) or Christine on 07866 127409 or Tricia on 07828 697304

**Christine Dudfield & Tricia Wilson**



**Winter Sunlight -a watercolour by Stourton artist Colin Beckett**

## The Crime Prevention Team

Alison Packer Rural Crime Advisor and her colleague came to last month's coffee shop and left me with lots of crime prevention equipment: for the residents of our villages.

Shed Alarms, Window Alarms, Property Marking kits, Personal Alarms, RF key protection cans, Switch pug timers and advice leaflets.

Please contact me for more details if you would like to try something out.

I will also be holding a property marking day at the hall at a later date.

This is funded by SDC and PCC.

**Christine Dudfield 07866 127409**

## Recycling in aid of Katherine House Hospice



**KATHARINE  
HOUSE  
HOSPICE**

Please bring your aluminium cans and clean foil to The Paddock, Stourton, CV365HG and leave inside the gate.

We are a collection centre for Katherine House Hospice

We collect empty tablet strips, aluminium cans, and clean foil. Please place donations in the separate boxes at the bottom of our drive thank you.

Remember – you can opt for the online LINK and stop or retain your printed copy through the door. It's your choice. Annual Subscription for 'online only' is half that for the printed magazine so sign up today and never have to search the house for your paper copy!

**THE LINK**

<https://www.swlink.org.uk/>

**THE LINK**

Email [online@swlink.org.uk](mailto:online@swlink.org.uk) for more details

## Long Compton Village Hall

The village hall committee would like to thank you all for using and supporting your hall in 2022. We have had several new hirers as well as the regular classes and in all I think we are back to where we were before "Shhh, you know what!" It only remains for me to wish you a happy New Year and we look forward to welcoming you through the doors in 2023.



**Mo Read Chair, Long Compton Village Hall**

A poster for a 'Social Saturday' event. The poster is enclosed in a dashed black border. On the left side, there is a logo consisting of the letters 'LV' stacked above 'CH' in a green, stylized font. To the right of the logo, the text 'Social Saturday' is written in a large, black, cursive font. Below this, the date '14<sup>th</sup> January' and the time '11am – 1pm' are written in a smaller, black, cursive font. At the bottom, the text 'Serving delicious savouries, cakes and hot drinks.' is written in a black, cursive font.

## Long Compton Walking Group

As this is written we await our usual Christmas walk -shorter than usual, hopefully dry under foot and followed by a festive lunch at The Red Lion.

After that, our next venture on Tuesday 10 January will again focus on avoiding the local mud and hoping for a crisp and bright winter's day. Meet as usual in the Red Lion car park at 9.30am. All welcome -please contact Stuart Brown at [sbcqc1@gmail.com](mailto:sbcqc1@gmail.com) if you would like to join us.

**Stuart Brown**

# Long Compton and District Garden Club

## Long Compton and District Garden Club



### 2023 Meetings

Long Compton Village Hall - 7.30pm



**Wednesday 22 February** Roger Umpleby "Pest and disease control without chemicals". Roger is a professional entomologist and horticulturalist with many years experience of consultancy and research.

**Wednesday 22 March** Robert Longstaff "Propagation" - how and when to take cuttings, the different types of cuttings, plant division, seed saving, sowing methods and composts. Trained by MAFF in the 1970s, Robert speaks on the BBC and TV and has practiced 'no dig' gardening since 1981.

**Wednesday 26 April** . Rosalind Sword of Chivel Farm, near Chipping Norton. "Plants for local soils". Rosalind brings a deep knowledge of how and what to grow in the soils around LC. She will introduce us to some of her favourite plants.

Contact Lesley Roberts 01608 684545 or [lesleyroberts46@gmail.com](mailto:lesleyroberts46@gmail.com) or Anthony Wells 01608 684337

On 23 November, our meeting was a quiz night. We chose a few of the questions and hope that you will have a go.

### QUESTIONS

1. The bark of which tree is known as 'nature's aspirin'?
2. One of Charles Darwin's scientific experiments involved playing music to what creatures in the gardens around his home, Down House?
3. Where is the Major Oak, possibly the most famous tree in the UK?
4. Who is the Patron Saint of gardeners?
5. Which flower, grown and picked at Osbourne House, has been carried by Royal brides since 1850?
6. What type of 20 metre Christmas tree is donated by Norway for Trafalgar Square?
7. Rosemoor Gardens are in what county?

### ANSWERS

1. Willow 2. Earthworms. 3. Sherwood Forest. 4. Saint Dorothy. 5. Myrtle 6. Spruce. 7. Devon

Lesley Roberts

## Long Compton Chapel



The Christmas Wreath Festival was enjoyed by all who came along. There were six entries in the individual category and five in the business/club category (Comptonians, Friends of LC Church, Acorns School, Sally's Driving School, and Elizabeth Gilkes Neals Yard) We want to thank those who made the effort, it was interesting to see the variety and scope of the entries.

The winners were:

### **Individual**

1st Isabel Pinfold

2nd Gabrielle Yates

3rd Richardson families (joint 3rd)

### **Village Club/business:**

The Comptonians



We would be delighted to have suggestions of any events you would like to see hosted at the chapel and even more delighted if you would like to organise or help organise such an event. We have tried various events but have not enjoyed much village support, although we are deeply grateful to those stalwart few who always come along and support us. The Chapel like any other 200-year-old building is quite expensive to run but importantly it needs substantial, and therefore costly building work to maintain and update it. We currently act as host for various charitable entities and of course open our car park to help the parents' delivering and collecting children from the school. To continue with these endeavours, we need your support with ideas and attendance for events!

Our new website:

[longcomptonchapel.co.uk](http://longcomptonchapel.co.uk) will go live in the new year. Our regular service is held on the 3rd Sunday of each month at 3.30pm. Whist Drives will recommence in March.

**Elizabeth Gilkes 07791 621778 or Sally Franklin 07870 545431**

**[longcomptonebenezerchapel@outlook.com](mailto:longcomptonebenezerchapel@outlook.com)**

The logo for the Long Compton book club features the words "Long Compton" in a green, cursive script font, with "book club" in a smaller, black, sans-serif font centered below it.

Our next meeting is on Thursday 12 January at 7.00 pm

We will be discussing "Notes from an Exhibition" by Patrick Gale

All Welcome

Contact: Carole Clements 01608 684938 [carole.r.clements@googlemail.com](mailto:carole.r.clements@googlemail.com)

## **Royal British Legion Poppy Appeal**

On behalf of the Royal British Legion, I would like to thank everyone who so generously supported this year's poppy appeal.

Thanks, must also go to all the volunteer house to house collectors and to Acorns School and local businesses who helped with the appeal.

Whilst I am sure we are all feeling economic pressures at this time, I am delighted to report that the Long Compton District attained a total sum of £3566.26p which exceeds all previous years.

**David Whatley Local Appeal organizer**

## **New Village Editor Required**

Please be aware we still need a new village editor for Long Compton. A presence in Long Compton is much better for the village so please consider volunteering.

In the meantime, your items should be sent to [longcompton@swlink.org.uk](mailto:longcompton@swlink.org.uk) and I will pick them up and edit the page.

## **Village Organisations**

Long Compton and District Garden Club - Contact Anthony Wells 684337 or Lesley Roberts 684545

Compton and District History Society - Contact Diana Cook 684771

Comptonians - Contact Margaret Welsh 684238

Village Hall - Mo Read on 684130, 07814 802814 or [lcvillagehall@yahoo.co.uk](mailto:lcvillagehall@yahoo.co.uk)

Compton Creatives - [caroline.nixon@btinternet.com](mailto:caroline.nixon@btinternet.com) or [jhburras@yahoo.co.uk](mailto:jhburras@yahoo.co.uk)

Long Compton & District Walkers - Stuart and Imogen Brown. 684042

Long Compton Bridge Club - Chris Galloway 684234

The Friends of Long Compton Church e: [friendslcchurch@gmail.com](mailto:friendslcchurch@gmail.com)

f: [@friendsoflongcomptonchurch](https://www.friendsoflongcomptonchurch.com/) and <https://www.friendsoflongcomptonchurch.com/>

Long Compton Sports Club:

Secretary: Andrew Lund-Yates 07813 032144/ 01451 820467 [andrewlundyates@gmail.com](mailto:andrewlundyates@gmail.com)

Cricket: Andrew Badham 07900-466339 and [ewbadham@icloud.com](mailto:ewbadham@icloud.com)



## THE RED LION QUIZ NIGHTS

SUNDAY 8TH JANUARY 7.30PM • *Age UK*

SUNDAY 22ND JANUARY 7.30PM • *Mind - Mental Health Charity*

SUNDAY 5TH FEBRUARY 7.30PM • *Macmillan Nursing*

SUNDAY 19TH FEBRUARY 7.30PM • *Long Compton Primary School*

# VILLAGE NEWS

## WHICHFORD AND ASCOTT

Editor: **Melanie Arnold**

Email: [whichford@swlink.org.uk](mailto:whichford@swlink.org.uk)

### **The Reading Room Draw**

Congratulations to Pauline Burns who was the winner of the December Reading Room draw.

**Jenny Scrivener**

# VILLAGE NEWS

## THE WOLFORDS

Editor, Little Wolford Email: [littlewolford@swlink.org.uk](mailto:littlewolford@swlink.org.uk)

Editor, Great Wolford: **Lynn Mathias**

Email: [greatwolford@swlink.org.uk](mailto:greatwolford@swlink.org.uk) Tel: 674247

### **New Volunteer Distributor needed**

After a commendable 16 years Gillian Ablewhite has decided to stop delivering the Link in Little Wolford. If you think you may be able to help. Please do let Gillian know when she drops by with your January Link.

### **Churchyard wall repaired!**

The members of Wolford PCC want to say a HUGE THANK YOU to all those who were involved in rebuilding the churchyard wall. Thanks to Tom, Graham, Will, Geoff, Simon, and others involved who gave freely of their skills, time, and machinery to rebuild the wall at no cost to the church. With the additional expenses we have incurred following a hole in the roof and the damage to the ceiling inside the church, for you all to have done this is much appreciated. They say God moves in mysterious ways and when we prayed for help to keep our church going, we had no idea that this would be the solution! Your actions have shown us that we are lucky to have such generously spirited people living in our village and the surrounding area. We can now use the monies we are raising from the fish and chips takeaway to fund the roof and ceiling repairs.

Thank you all so much for your kindness

**Ann McKenna**

### **The Wolfords Village Hall One Hundred Club**

The December winners were as follows:

1<sup>st</sup> prize – Janet Pope 2<sup>nd</sup> prize – James van Helden 3<sup>rd</sup> prize – Pippa Lines



Many congratulations to the above. Please let me know if you would like to have more shares as the club is still short of 100 shares. Of course, multiple shares do increase the chance of winning and all proceeds go to help with the upkeep of the village hall.

**James van Helden**

## **The Wolford WI Centenary Year**

We continued our celebrations with a visit to Chipping Norton Theatre for the pantomime; there have been 50 years of the Chippy Panto! This year it was Dick Whittington with his trusty companion preventing Queen Rat taking over London. There was of course a pantomime dame, plenty of innuendoes and lots of sweets. It was great fun, and everyone really enjoyed it. We are so lucky to have a theatre like that on our doorstep.

Our meeting in December was on Zoom at the village hall with Rosie Lee talking about "Life as a Shepherdess. Although Rosie was a Cheshire dairy farmer's daughter, she was not bought up to take over the farm so when her father died, she was completely unprepared having made a career in banking; so, she became the Reluctant Shepherdess. Fields of thistles are not a good start, but it did mean that chemicals had not been used on the farm. Rosie then started a 2nd career, going to college to study conservation and working with the Cheshire Wildlife Trust. The farm was run under environmental stewardship, and she chose Shropshire sheep to keep the grass down in fields of Christmas trees. It was learning on the hoof and setting herself new challenges all the time, even learning how to export her sheep. Rosie's passion is opening the farm to local schools, children with disabilities and offering work experience to youngsters interested in becoming farmers, giving them real hands-on experience. Her talk had lots of funny stories of her learning about sheep; it was amazing what she had achieved and just how much she loved her animals. It was a shame it was via Zoom, but she was still a brilliant speaker. There were lots of questions and everyone really enjoyed the talk. We were then treated to a lovely Xmas spread provided by the new committee. This included a Christmas cake and non-alcoholic mulled wine.

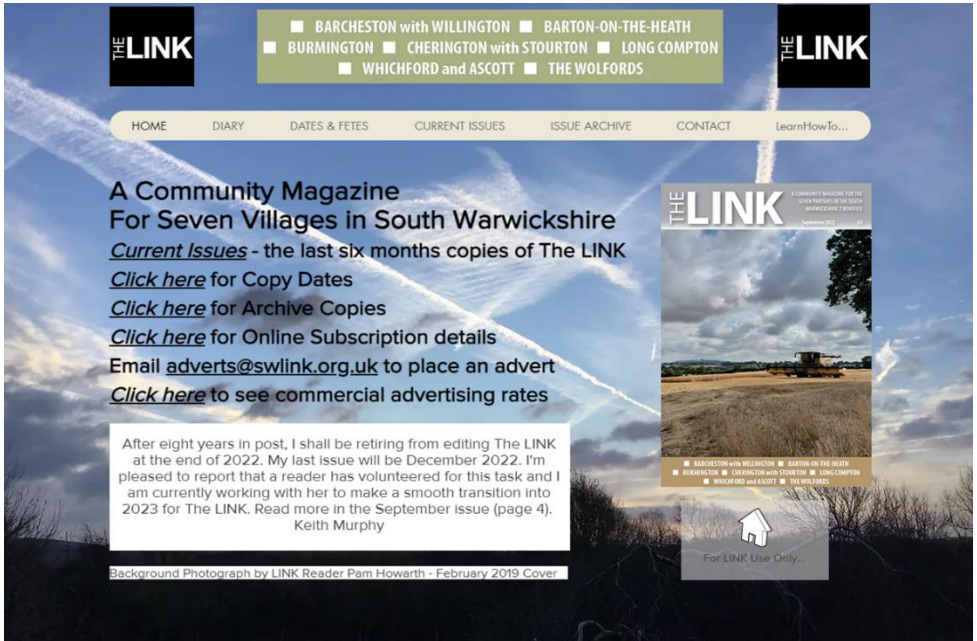
### **Next Meeting**

We do not have a meeting in January, but we do go out for a meal. So, we are off to The Lion at Tredington. We also meet up for supper out at local pubs and for local walks.

If you would like to join us at a meeting or come to a coffee and chat locally to meet some of us, please contact:

**President Gilly Davis, 07812 344 598, Secretary Theresa Wakeham, 686 098**

# Don't Forget, *The LINK* has a Website...



The screenshot shows the homepage of 'The LINK' website. At the top, there are two 'THE LINK' logos on either side of a central navigation bar. The navigation bar contains links for HOME, DIARY, DATES & FETES, CURRENT ISSUES, ISSUE ARCHIVE, CONTACT, and LearnHowTo... Below the navigation bar, the main heading reads 'A Community Magazine For Seven Villages in South Warwickshire'. Underneath, there are several links: 'Current Issues - the last six months copies of The LINK', 'Click here for Copy Dates', 'Click here for Archive Copies', 'Click here for Online Subscription details', and 'Email adverts@swlink.org.uk to place an advert'. A link for 'Click here to see commercial advertising rates' is also present. A text box contains a notice from Keith Murphy regarding his retirement from editing the magazine at the end of 2022. To the right, there is a thumbnail image of a magazine cover for 'The LINK' with a list of villages: BARCHESTON with WILLINGTON, BARTON-ON-THE-HEATH, BURMINGTON, CHERINGTON with STOURTON, LONG COMPTON, WHICHFORD and ASCOTT, and THE WOLFORDS. A small house icon and the text 'For LINK Use Only...' are visible at the bottom right of the screenshot.

From the site at <https://www.swlink.org.uk/> you can access the current issues of the magazine if you have registered for online access, you can see backdated issues over six months old, you can check for the monthly copy dates, check the monthly events diary and learn more about advertising in the magazine.

*The LINK* currently distributes 625 magazines across the Benefice and has over 30 'online only' subscribers. 'Online only' annual subscription is £6 and our printed delivery subscription is £12. Almost half our subscribers are now registered to pay their subscriptions by BACS.



<https://www.swlink.org.uk/>



# Move Like a Cat



## Learn Tai Chi & Qigong

Brailles Wed 5.45-6.45pm  
Hook Norton Fri 5pm-6pm

[www.taichiflow.art](http://www.taichiflow.art)  
07986622049

**FLOW**  
Tai Chi & Qigong



## DAVID BUTLER PLUMBING & HEATING

A family-run business for over 40 years,  
specialising in:

- Oil, LPG & Gas Boilers
- Central Heating
- Heat Loss Surveys
- Thermostat Control Upgrades
- General Plumbing
- OFTEC and Gas Safe Registered

For general enquiries or to book a service:

Call: James Butler 07760977058

Email: [dbutlerheating@gmail.com](mailto:dbutlerheating@gmail.com)

litho printing  
digital printing  
giclée printing  
pantone printing  
graphic design  
fine art scanning  
print finishing

T 01608 737 640

E [enquiries@kmslitho.co.uk](mailto:enquiries@kmslitho.co.uk)

[www.kmslitho.co.uk](http://www.kmslitho.co.uk)

Railway Bridge House, Station Road,  
Hook Norton, Oxfordshire OX15 5LS

**KMSLITHO**

YOUR PRINT, OUR PASSION

# SHIPSTON SPOKES

## VISIT OUR SPECIALIST E-BIKE CENTRE



### ALSO IN STORE

- ADULT AND JUNIOR BIKES
- WIDE RANGE OF SPARES & ACCESSORIES
- CYTECH CERTIFIED WORKSHOP
- AUTHORISED BOSCH SERVICE CENTRE

**Shipston Spokes, 9 Church Street, Shipston-on-Stour, CV36 4AP**

**T:** 01608 664588 **E:** [shop@shipstonspokes.com](mailto:shop@shipstonspokes.com) **W:** [shipstonspokes.com](http://shipstonspokes.com)

**OPENING HOURS:** Tuesday to Saturday 10am - 4pm

Drop off & collection for repairs or servicing can be arranged out of these hours if required

## Sun Rising

Natural Burial Ground  
and Nature Reserve

A place of deep peace where  
loved ones can be laid to rest  
in growing woodland and  
wildflower meadows.



01295 688488

[sunrising.co.uk](http://sunrising.co.uk)

near Lower Tysoe



## Blocked Ears?



**EAR WAX** can be troublesome and cause  
sudden loss of hearing, feel uncomfortable  
and itchy – but it can be easily removed at  
our clinic in Blockley.

## The Willows

**NORTH COTSWOLDS EAR HYGIENE CENTRE**

Unit 47, Northwick Business Centre,  
Blockley, Moreton-in-Marsh, GL56 9RF

Book Online: [www.earhygienist.co.uk](http://www.earhygienist.co.uk)

Or contact Issy today: 01386 701650

[issy@earhygienist.co.uk](mailto:issy@earhygienist.co.uk)

# John Napier Forestry and Timber

Trees purchased: standing, felled dead or live.

Hardwood Boards and Oak Beams available on request.

Seasoned, dry barn stored, locally-felled  
firewood and kindling

07816 379836

jnapierforestry@yahoo.co.uk

website: jnapierforestry.com

## Oats Health Foods



Comprehensive range of foods,  
supplements, body care and  
eco-household goods.

Upstairs a greeting card gallery plus  
anything else that takes our fancy.

26 High Street  
Chipping Norton, OX7 5AD  
Tel: 01608 64 65 56

## CHERINGTON LOCKSMITHS & HANDYMAN



LOCKS CHANGED  
FLATPACKS ASSEMBLED  
SHELVES PUT UP  
PAINTING  
NO JOB TOO SMALL

TO FIND OUT MORE  
GIVE US A CALL  
01608 685957 / 07970 321718  
JOHN OR ANNE

## WINTER OPENING HOURS

Modern British cooking using fresh seasonal ingredients from our local four counties growers and producers.

**SUPPER** Wednesday, Thursday, Friday and Saturday evenings from 6pm with the last sitting at 8.30pm\*

**LUNCHEs** Light lunch and snacks are available daily in the bar from noon until 2pm

**SUNDAY LUNCH** traditional family style service served from midday with last food orders at 4pm

\*Local friends will receive 20% discount off supper on Wednesday and Thursday evenings. A table reservation must be made to receive the 20% discount off the food element of the bill.

01608 685633 | [www.feldonvalley.co.uk](http://www.feldonvalley.co.uk)  
Feldon Valley, Sutton Lane, Lower Brailes, OX15 5BB

FELDON VALLEY

## DANIEL KNIGHT

**SEASONED  
HARDWOOD LOGS**

**£110.00 A LOAD**

**KINDLING AVAILABLE**

**07815 795783**

**[danielknight27@outlook.com](mailto:danielknight27@outlook.com)**



*physiotherapy clinic & pilates studio  
A helping hand to get you back to health*

**Physiotherapy  
Sports Massage  
Pilates Classes**

Visit the website for more information  
or call to speak to a member of the team

**T: 01608 545 608**

**E: [physio@chippingnortonphysio.com](mailto:physio@chippingnortonphysio.com)**

**[www.chippingnortonphysio.com](http://www.chippingnortonphysio.com)**

# Morgan Roofing

## Services

### 07765 228784



We are one of the leading roofing companies in Warwickshire and West Midlands. We undertake all types of traditional, domestic and commercial roofing work including: repairs and restorations, re-roofs and flat roofs, lead roofing, and built up felt roofing.

For a free quote, call **Peter Morgan on 07765 228784** or 01608 433032 or 01386 304324. Email: **morg11p@hotmail.co.uk**

We provide completely free no-obligation estimates for all jobs.

**[www.morganroofingservices.co.uk](http://www.morganroofingservices.co.uk)**

Give us a detailed description of what you want done, and we'll respond quickly with a detailed, no-obligation estimate.



**SNJCARPENTRY AND GLAZING**

**[WWW.SNJCARPENTRYANDGLAZING.CO.UK](http://WWW.SNJCARPENTRYANDGLAZING.CO.UK)**

SPECIALISTS IN  
INTERNAL AND  
EXTERNAL CARPENTRY  
AND GLAZING.

- Door hanging
- Skirting and Architrave
- Bespoke built in cupboards
- Wooden flooring
- Replacement Windows and Doors
- New Windows and Doors
- Replacement glass
- Replacement hinges, handles or locking mechanisms



CONTACT US FOR A NO OBLIGATION QUOTE:  
07851 436 136 / 01608 661352

## *TWO JOLLY COOKS*

Cut down kitchen time with home-made soups & meals delivered to your door, frozen.

Perfect for busy families, children, and smaller appetites. Meals are full of quality, locally sourced ingredients and sold in 200g/400g non plastic containers.

Minimum order of £15 for local delivery (from Enstone).

Meals for up to 6 people can be ordered.



Email: [twojollycooks@outlook.com](mailto:twojollycooks@outlook.com)

Website: [www.twojollycooks.co.uk](http://www.twojollycooks.co.uk)

Based in Enstone, Chipping Norton

## HALL FOR HIRE

### **Burmington Village**

Historic hall in a pretty location

Carpeted, heated hall

Well equipped kitchen

Tables, chairs & cloths

...all included in the price

Contact Irene Clarke 01608 656296

## **K.A. PERKINS**

SITE  
CLEARANCE

**PLANT HIRE**

GROUND  
WORKS

Water Supplies, Drainage, Ditching

Road & Drive Construction

Tarmacing, Patios, Block Paving

DEMOLITION

Tel: 01608 686189

BUILDING

Mobile: 07702106739

**R.Locke & Son**  
Independent Family Funeral Directors - Est 1853

t: (01608) 685274 Cauton Corner, BRAILES, OX15 5AZ



*Generations of Care*

For more information about our services, to view our funeral announcements and online donations, please visit



[www.rlockeandson.co.uk](http://www.rlockeandson.co.uk)

Golden Charter  
Funeral Plans 

## **THE WOLFORDS VILLAGE HALL**

Ideal for children's parties, meetings, classes, family gatherings, BBQs, company training

- seats 50 - 60, (80 standing)

- excellent disabled access

- well-equipped, modern kitchen

Bookings:

<https://www.thewolfordsvillagehall.org.uk>

**Fed up with the headache of  
bookkeeping?  
Let me handle everything for you.  
Professional Bookkeeping and  
Payroll Service**

Vat returns\* Annual accounts\* Cash flow\*  
Monthly figures

Bank reconciliation\* Using your system or  
starting from scratch

Ann McKenna MICB CB.Dip PM.Dip  
Leylands Business Services

07500 678206/ 01608 674009

[annmckenna3@sky.com](mailto:annmckenna3@sky.com)



**Member of the Institute of  
Certified Bookkeepers**

## **John Lyne homehardware**

Stockists of a wide range of DIY, Household,  
Gardening and Cookware products

**Shop Local - no need to travel out of town!**

Free local delivery service

1 High Street, Shipston-on-Stour.

Tel: 01608 661422

OPEN: Mon to Fri: 8am-5.30pm. Sat: 8am - 5pm

[www.homehardware.co.uk](http://www.homehardware.co.uk)



## Sole Funeral Service

Bidston Close, Over Norton

Sympathetic & personal service  
from a qualified funeral director  
with private chapel

Memorials designed & supplied

**Tel: 01608 644112**

at any hour

# TAXI!

## CLARKES OF SHIPSTON

Licensed Private Hire  
Airport Service

To book or obtain a quote call:

**(01608) 661418**

or email:

[stuart.clarke@lineone.net](mailto:stuart.clarke@lineone.net)

## W E Sutton Ltd

### Ground Works & Plant Hire

Est. 1963



Long established and experienced company

- All types of ground works
- Drainage
- Plant hire
- Council Approved contractors

7 Brook Cottages, Willington, Shipston on Stour,  
Warwickshire CV36 5AU

Tel: 01608 663300 Fax: 01608 664669

Mobile: 07970 632265

## Need a Good Venue?

Long Compton Village Hall  
can meet your needs, **as  
soon as normal service  
can be resumed.**

Superbly equipped kitchen, ample  
parking, capacity for up to 100,  
separate meeting room, china and  
furniture hire.

Wifi now available!

Call Ann Lattimore on 01608 684540  
or email [lcvillagehall@yahoo.co.uk](mailto:lcvillagehall@yahoo.co.uk)  
for more information, or to make a  
booking.

## Long Compton Village Hall



ANDREW JAMES  
DERMATOLOGY

Andrew James Dermatology  
provides the following services:

**Mole Mapping** - to identify skin cancers  
and suspicious moles earlier rather than  
later. Yearly or biannual surveillance.

**Skin lesion identification** - to put your  
mind at ease.

**Minor Skin Surgery** - for non-cancerous  
skin lesions such as warts, skin tags,  
seborrheic keratoses, dermatofibroma,  
moles and more.

**General Dermatology** - acne, eczema,  
psoriasis, infections.

### Website

[www.andrewjamesdermatology.com](http://www.andrewjamesdermatology.com)

### Email

[admin@andrewjamesdermatology.com](mailto:admin@andrewjamesdermatology.com)

Phone - 07508 039785

Jonathan Perry  
**CHIMNEY SWEEP**

Open fires, Inglenooks, Wood burners,  
Agas

For a clean, friendly and professional  
service please contact me on:

Tel: 07557 058051

Email: [jperrychimneysweep@gmail.com](mailto:jperrychimneysweep@gmail.com)



Guild of Master Chimney  
Sweepers qualified



All work certificated for house  
insurance purposes

### Long Compton Village Stores

**Main St, Long Compton.**

- ✓ **Takeaway food: hot pies, fresh cut sandwiches, tea & coffee etc.**
- ✓ **Instore bakery, cakes pastries etc.**
- ✓ **Dry Cleaning**
- ✓ **Greengrocery, dairy products, confectionery**
- ✓ **Gluten free products**
- ✓ **Newsagents & Stationery**
- ✓ **Off licence**
- ✓ **Flowers**
- ✓ **Home delivery**

**Tel: 01608 684277**

## MUSIC TUITION

Tuition in Classical Guitar  
and Piano.

All ages welcome.



**Dr. Julian Grimshaw**

B.Mus, D.Phil (Oxon)

01451 821525

07891 423855

[jdwyergrimshaw@btinternet.com](mailto:jdwyergrimshaw@btinternet.com)

## Auction Sales & Valuations

Valuation, collection and auction  
service of individual items  
through to complete property  
and commercial clearances.

Call for a free no obligation quote or  
email [info@leauction.co.uk](mailto:info@leauction.co.uk)

**SALE ENTRIES NOW INVITED**

[www.leauction.co.uk](http://www.leauction.co.uk)



**LOCKE & ENGLAND**  
AUCTIONEERS & VALUERS

**01926  
889100**

**18 Guy Street,  
Leamington Spa,  
CV32 4RT**



## Compassionate Care for people of the Cotswolds



Shipston Care

Shipston Care is a leading home care provider based in the Cotswolds. We offer a Live-in care service that can be a great alternative to leaving the familiar surroundings of your own home.

Our success is built around the quality of our carers and support staff who will carry out a **free, no obligation needs assessment** to establish what your individual needs are.

Whether you require personal care, assistance with daily activities, or would just like some companionship, we are dedicated to delivering the highest possible standards of live in care to enable you to continue living in your own home.

**For an informal chat, please give our friendly team a call on 01608 663377**



*"I knew, through my work as a nurse at a local Hospital, of your good reputation and responsiveness before you started caring for my mum. However, it was only when she needed your help that I realised quite how good you are. It's been quite reassuring knowing that mum had been safe at home with your carers. I know that she is also grateful for the stability this has provided. Without your support, my mum wouldn't have been able to stay in her home for so long - and the way you have been able to increase care rapidly when she needed it helped with this." Philip Vial.*

### We have built our reputation on:

- Carefully matching the carer to you, our client
- Our support for daily activities
- Empathetic Personal Care
- Respectful Companionship Care
- Safe Medication Handling
- Excellent Meal Preparation

### You will benefit from:

- Industry best yet affordable care
- The services of one carer who is carefully selected to best suit you, your needs, and your lifestyle
- Catering for your requirements and ongoing needs
- A personalised service

enquiries@shipstoncare.co.uk | 4 Granville Ct, Shipston-on-Stour, CV36 4PP | 01608 66 33 77

Shipston Care Limited is fully regulated by the Care Quality Commission



# THE RED LION

a country inn with rooms

Special Valentine's Day Evening Menu

3 Courses - £45 per person

Bookings 6pm - 8pm

Contact us for further details

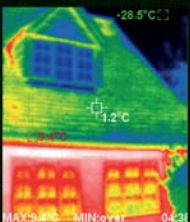
Long Compton, Nr Shipston on Stour,  
Warwickshire CV36 5JS  
Telephone: 01608 684221

[www.redlion-longcompton.co.uk](http://www.redlion-longcompton.co.uk)

[Twitter](#) [Facebook](#) [Instagram](#) @redlionlongcomp

## Plan the energy upgrade for your home

All products shown are timber-composite windows



Specialist installer of alu-clad,  
low maintenance wooden windows

Very high performance

Expected to last over 60 years

A wooden window with no repainting

**FREE** thermal imaging survey  
of your home with every installation.  
See where your home leaks heat



### ENLIGHTENED WINDOWS

*Truly the next generation of products*



**01608 684607**  
[enlightenedwindows.co.uk](http://enlightenedwindows.co.uk)